

# ANNUAL SPRING BULL SALE

THURSDAY 14TH SEPTEMBER 2023 | 1PM

---



**QW**  
**QUARTERWAY**  
ANGUS









# QUARTERWAY

## ANGUS

# Annual Spring Bull Sale 2023

## THURSDAY 14 SEPTEMBER - 1PM

### 61 BULLS / 49 - 24 Month & 12 Yearlings

ON-PROPERTY & ONLINE  
 INTERFACED with AUCTIONSPLUS  
 View from 10am - Auction 1pm

Enquiries welcome.  
 Complimentary BBQ Lunch available after the sale

**TREVOR & TERESA HALL**  
 Trevor - 0409 210 055  
 midwaycattle@bigpond.com



AuctionsPlus

SELLING AGENTS

NUTRIEN LIVESTOCK, Launceston - 03 6391 6539  
 ELDERS LAUNCESTON - 03 6398 8500



Daniel Morice - 0409 170 419  
 Nigel Brown - 0418 595 407



Jock Gibson - 0418 133 595  
 Warren Johnston - 0419 326 348  
 Graeme Bligh - 0439 175 069  
 Cooper Lamprey - 0429 304 110

SALE LOCATION  
 "Lyndhurst"  
 2235 Waterhouse Road,  
 Waterhouse, Tasmania



## GUARANTEE

In the event of a bull proving to be infertile for natural service in the first six months from sale date, the vendor will offer to supply a replacement (if available), or credit the purchase price (less any salvage value of the bull) to be used at the next sale.

This is provided the problem is not caused by injury or disease since sale day. Any claim must be accompanied by a relevant veterinary certificate. Two semen tests - a minimum of six weeks apart - to accompany claims of infertility.

## CARING FOR YOUR BULL

These bulls have never been alone. Please have companions in the yards for them to go in with when they arrive at your farm.

## ANIMAL HEALTH

All catalogued bulls are ear-notched negative for Pesti, are vaccinated for Pesti, and received the 7 in 1 Dectomax & MultiMin vaccinations.

## ANIMAL DETAILS

Animal details included in this catalogue, including but not limited to pedigree, DNA information, Estimated Breeding Values (EBVs) and Index Values, are based on information provided by the breeder or owner of the animal.

Whilst reasonable care has been taken to ensure all the information provided in this catalogue was correct at time of publication, Angus Australia will assume no responsibility for the accuracy or completeness of the information, not for the outcome (including consequential loss) of any action taken on this information.

The suffix displayed at the end of each animal's name indicates the DNA percentage verification that has been conducted by Angus Australia.

PV - both parents have been verified by DNA

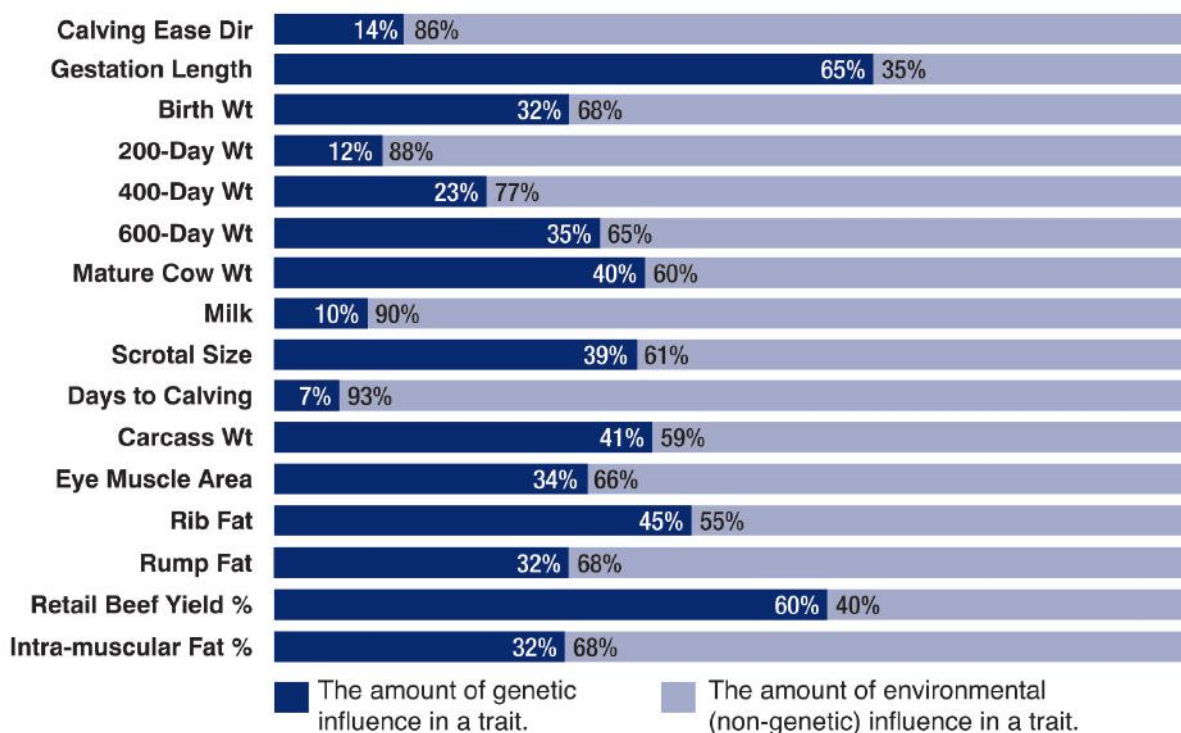
SV - the sire has been verified by DNA

DV - the dam has been verified by DNA

# - DNA verification has not been conducted

E - DNA verification has identified the sire and/or dam may possibly be incorrect, but this cannot be confirmed conclusively.

## Heritability Estimates





## The team at Quarterway welcomes you to our Annual Spring Bull Sale.

We have come through a very wet, but temperate winter and the sale teams do-ability has been proven. They have maintained their growth and muscle throughout the cooler months and come through it all bigger and better.

We have some exceptional sires featuring in this sale.

Merridale Port P105 is a son of Milwillah Krakatoa and has proven his worth with a fantastic group of his progeny being offered. He is an easy doing bull with a strong hind and depth. He has passed on thickness and depth to his sons and daughters.

On offer again are some of New Zealand's Turiora Ragnar sons. Ragnar is a medium framed bull with smooth shoulders and a ton of meat. He is a very well-structured bull producing impressive calves.

Quarterway Pascal and Quarterway Perfection are sons of Merchiston Steakhouse and Texas Mount respectively.

Both bulls had been kept for use in the commercial program but proved to be stud quality and have made a real impact within the stud herd. Both bulls have exceptional temperaments. Thick framed bulls who throw strong calves.

While in South Australia back in 2021 we attended a few Autumn Bull sales. More for just a look but purchased a couple none-the-less.

Nampara Junior was the top priced bull at their Autumn 2021 sale and has grown out into a big, thick, easy doing and very fertile bull.

Pathfinder Prophet again was the top selling bull at their Autumn sale and is a fantastic carcass bull, a big meaty bull. Both bulls have first sons offered in this sale.

EBV's are great for getting an indication of a bull's performance across a range of traits, but what you see when viewing the animal IS what you get.

The temperament, type, structure, frame and maturity pattern are all right in front of you when you are looking at the bull. Once you have selected the bull the EBV's are locked in and add to the genetic potential of your herd. But be aware, the physical characteristics you observe are what you will be dealing with day to day, year after year, as his calves and daughters move through your herd.

The more generations you can stack with the characteristics you require, and cull those that don't meet those requirements, the greater the chance of your herd consistently breeding true to your type.

This is always at the front of our minds when selecting sires to use, replacement heifers, and while going through the calves each year. There is no point chasing huge, numbered bulls or the latest big hype bull, if they can't produce the type of cattle we require.

Our aim is to produce bulls who will put a lot of meat onto their progeny, who will in turn equate to maximum dollars in the market.

Complimentary BBQ to follow the sale. Sale bulls will be available for early viewing by appointment only. Otherwise, the gate will be open at 10am sale day.

Looking forward to seeing you there.

*Trevor and Teresa*





## RS BANQUET PAXMAN P306<sup>SV</sup>

HBR

Ident: VONP306

Born: 01/08/2018 AMF,CAF,DDF,NHF,DWF,MAF,MHF,OHF,OSF,RGF

AYRVALE BARTEL E7<sup>PV</sup>

NBNM51 BEN NEVIS METAMORPHIC M51<sup>SV</sup>

BEN NEVIS JEAN K80#

S CHISUM 6175PV

VONJ245 BANQUET TABERNACLE J245#

BANQUET TABERNACLE W115#

Mating Type: AI

Mid August 2023 TransTasman Angus Cattle Evaluation											
 TACE TransTasman Angus Cattle Evaluation	Birth Wt.	Milk	200 Wt.	400 Wt.	600 Wt.	Scrotal Size	Carcase Wt.	EMA	Rump Fat	IMF%	
	EBV	+5.3	+20	+61	+108	+143	+1.8	+83	+3.8	-3.7	+1.3
	Acc	88%	67%	81%	80%	85%	83%	71%	69%	71%	71%

Traits Observed: GL,BWT,200WT(x2),400WT,SC,Scan(EMA,Rib,Rump,IMF),Genomics MHF,RGFNumber of Herds: 1, Prog Analysed: 25, Genomic Prog: 0

## RS BANQUET PEGG P110<sup>SV</sup>

HBR

Ident: VONP110

Born: 20/03/2018

AMFU,CAFU,DDFU,NHFU

BANQUET FORBIDABULL F485<sup>PV</sup>

VONL352 BANQUET LIBERTY L352<sup>PV</sup>

BANQUET DREAM G489DV

PRIME JUGGERNAUT J15SV

VONL041 BANQUET LASS L041#

JACKSON FRONTIER LASS Z8<sup>SV</sup>

Mating Type: Natural

Mid August 2023 TransTasman Angus Cattle Evaluation											
 TACE TransTasman Angus Cattle Evaluation	Birth Wt.	Milk	200 Wt.	400 Wt.	600 Wt.	Scrotal Size	Carcase Wt.	EMA	Rump Fat	IMF%	
	EBV	+6.4	+15	+49	+84	+117	+4.2	+66	+2.6	-4.6	+1.7
	Acc	83%	65%	79%	78%	82%	78%	69%	66%	68%	68%

Traits Observed: BWT,200WT,400WT,600WT,SC,Scan(EMA,Rib,Rump,IMF),Genomics Number of Herds: 1, Prog Analysed: 14, Genomic Prog: 0

## RS BEN NEVIS MYSTIC M97<sup>SV</sup>

HBR

Ident: NBNM97

Born: 03/08/2016

AMFU,CAFU,DDFU,NHFU

WERNER WAR PARTY 2417#

USA16984170 R B TOUR OF DUTY 177<sup>PV</sup>

B A LADY 6807 305#

J & C EVIDENCE E11SV

NBNH6 BEN NEVIS GERANIUM H6#

BEN NEVIS GERANIUM V29#

Mating Type: AI

Mid August 2023 TransTasman Angus Cattle Evaluation											
 TACE TransTasman Angus Cattle Evaluation	Birth Wt.	Milk	200 Wt.	400 Wt.	600 Wt.	Scrotal Size	Carcase Wt.	EMA	Rump Fat	IMF%	
	EBV	+5.9	+17	+51	+97	+127	+0.9	+84	+8.3	-2.1	+0.0
	Acc	95%	65%	85%	90%	92%	90%	76%	74%	75%	74%

Traits Observed: BWT,400WT(x2),SC,Scan(EMA,Rib,Rump,IMF) Number of Herds: 1, Prog Analysed: 115, Genomic Prog: 2



## RS KAHARAU CLASS MAN 17-444#

HBR

Ident: NZE17683017444

Born: 18/08/2017 AMFU,CAFU,DDF,NHF,DWF,MAF,MHF,OSF,RGF

KAHARAU ZODIAC 799#

NZE17683010378 KAHARAU CLASSIC 10-378#

KAHARAU 07-8244#

MATAURI REALITY 839#

NZE19944112H601 GOLDWHN JESS H601#

GOLDWYN 05-595#

Mating Type: Natural

Mid August 2023 TransTasman Angus Cattle Evaluation											
 TACE TransTasman Angus Cattle Evaluation	Birth Wt.	Milk	200 Wt.	400 Wt.	600 Wt.	Scrotal Size	Carcase Wt.	EMA	Rump Fat	IMF%	
	EBV	+5.4	+8	+46	+86	+116	+2.3	+49	-1.2	-2.5	+1.2
	Acc	95%	70%	92%	92%	93%	90%	77%	77%	78%	76%

Traits Observed: CE,200WT,400WT,600WT,SC,Scan(EMA,Rib,Rump,IMF),Genomics MHF,RGFNumber of Herds: 4, Prog Analysed: 81, Genomic Prog: 3

## RS KAYJAY PORTERHOUSE N13#

HBR

Ident: NZE13516017N13

Born: 28/07/2017

AMFU,CAFU,DDFU,NHFU

MERCHISTON EXCLUSIVE 269#

NZE14738014489 MERCHISTON STEAKHOUSE 489#

MERCHISTON RANGI 684#

TE MANIA QUANTUM 09 490SV

NZE13516112H571 KAYJAY ANN H571#

KAYJAY ANN 374#

Mating Type: Natural

Mid August 2023 TransTasman Angus Cattle Evaluation											
 TACE TransTasman Angus Cattle Evaluation	Birth Wt.	Milk	200 Wt.	400 Wt.	600 Wt.	Scrotal Size	Carcase Wt.	EMA	Rump Fat	IMF%	
	EBV	+5.6	+15	+50	+91	+109	+2.9	+67	+3.3	-1.4	-2.0
	Acc	92%	77%	89%	90%	91%	89%	77%	75%	76%	75%

Traits Observed: BWT,200WT,400WT,600WT,SC,Scan(EMA,Rib,Rump,IMF),Genomics Number of Herds: 3, Prog Analysed: 19, Genomic Prog: 4

## RS MERRIDALE PORT P105<sup>PV</sup>

HBR

Ident: CMDP105

Born: 09/03/2018

AMFU,CAFU,DDFU,NHFU

MATAURI REALITY 839#

NJWK92 MILWILLAH KRAKATOA K92<sup>PV</sup>

MILWILLAH BARUNAH H224#

R B TOUR OF DUTY 177PV

CMDM103 MERRIDALE DREAM M103<sup>PV</sup>

MERRIDALE DREAM J100<sup>SV</sup>

Mating Type: ET

Mid August 2023 TransTasman Angus Cattle Evaluation											
 TACE TransTasman Angus Cattle Evaluation	Birth Wt.	Milk	200 Wt.	400 Wt.	600 Wt.	Scrotal Size	Carcase Wt.	EMA	Rump Fat	IMF%	
	EBV	+4.7	+8	+59	+104	+140	+2.4	+80	+11.1	-3.3	+0.1
	Acc	86%	65%	80%	79%	85%	82%	71%	69%	71%	70%

Traits Observed: BWT,600WT,Scan(EMA,Rib,Rump,IMF),Genomics Number of Herds: 1, Prog Analysed: 23, Genomic Prog: 0



## RS NAMPARA JUNIOR Q148<sup>SV</sup>

HBR

Ident: **SFNQ148**

Born: **04/04/2019**

**AMF,CAF,DDF,NHF,DWF,MAF,MHF,OHF,OSF,RGF**

TUWHARETOA REGENT D145<sup>PV</sup>  
**WDCJ266 COONAMBLE JUNIOR J266<sup>PV</sup>**  
 BANGADANG LOWAN A61<sup>PV</sup>

ABERDEEN ESTATE FOKKER F27<sup>PV</sup>  
**SFNM112 NAMPARA M112<sup>#</sup>**  
 WITTALOCKA EDITION G94<sup>#</sup>

Mating Type: AI

Mid August 2023 TransTasman Angus Cattle Evaluation											
 TACE TransTasman Angus Cattle Evaluation	Birth Wt.	Milk	200 Wt.	400 Wt.	600 Wt.	Scrotal Size	Carcase Wt.	EMA	Rump Fat	IMF%	
	EBV	+6.3	+14	+51	+91	+109	+1.5	+75	+8.7	-0.6	+1.1
	Acc	92%	68%	84%	85%	81%	70%	72%	63%	66%	67%

Traits Observed: GL,BWT,200WT,400WT,600WT,SC,Scan(EMA,Rib,Rump,IMF),Genomics MHF,RGF Number of Herds: 3, Prog Analysed: 72, Genomic Prog: 0

## RS NAMPARA N244<sup>SV</sup>

HBR

Ident: **SFNN244**

Born: **09/09/2017**

**AMFU,CAFU,DDFU,NHFU**

THOMAS UP RIVER 1614<sup>PV</sup>  
**NMML133 MILLAH MURRAH LOCH UP L133<sup>PV</sup>**  
 MILLAH MURRAH BRENDA H49<sup>SV</sup>

RAFF EXPLOSIVE E108<sup>PV</sup>  
**SFNH07 NAMPARA H07<sup>SV</sup>**  
 NAMPARA F83<sup>#</sup>

Mating Type: AI

Mid August 2023 TransTasman Angus Cattle Evaluation											
 TACE TransTasman Angus Cattle Evaluation	Birth Wt.	Milk	200 Wt.	400 Wt.	600 Wt.	Scrotal Size	Carcase Wt.	EMA	Rump Fat	IMF%	
	EBV	+4.3	+21	+50	+84	+100	+1.9	+62	+4.8	-1.0	+1.4
	Acc	93%	67%	84%	88%	90%	84%	75%	75%	75%	74%

Traits Observed: BWT,400WT,SC,Scan(EMA,Rib,Rump,IMF) Number of Herds: 1, Prog Analysed: 73, Genomic Prog: 0

## RS PATHFINDER PROPHET Q400<sup>SV</sup>

HBR

Ident: **SMPQ400**

Born: **09/03/2019**

**AMFU,CAFU,DDFU,NHFU**

C R A BEXTOR 872 5205 608<sup>#</sup>  
**USA16295688 G A R PROPHET<sup>SV</sup>**  
 G A R OBJECTIVE 1885<sup>#</sup>

TE MANIA AFRICA A217<sup>PV</sup>  
**SMPG509 PATHFINDER BOWMAN G509<sup>#</sup>**  
 PATHFINDER BOWMAN B090<sup>SV</sup>

Mating Type: AI

Mid August 2023 TransTasman Angus Cattle Evaluation											
 TACE TransTasman Angus Cattle Evaluation	Birth Wt.	Milk	200 Wt.	400 Wt.	600 Wt.	Scrotal Size	Carcase Wt.	EMA	Rump Fat	IMF%	
	EBV	+5.5	+16	+66	+105	+130	+2.2	+65	+4.3	-1.4	+3.9
	Acc	93%	70%	83%	86%	81%	71%	74%	67%	69%	70%

Traits Observed: GL,BWT,200WT,400WT,600WT,SC,Scan(EMA,Rib,Rump,IMF),Genomics Number of Herds: 1, Prog Analysed: 87, Genomic Prog: 0

## RS BANQUET PAXMAN P306<sup>SV</sup>

HBR

Ident: **VONP306**

Born: **01/08/2018** AMF,CAF,DDF,NHF,DWF,MAF,MHF,OHF,OSF,RGF

AYRVALE BARTEL E7<sup>PV</sup>

**NBNM51 BEN NEVIS METAMORPHIC M51<sup>SV</sup>**

BEN NEVIS JEAN K80#

S CHISUM 6175PV

**VONJ245 BANQUET TABERNACLE J245#**

BANQUET TABERNACLE W115#

Mating Type: AI

Mid August 2023 TransTasman Angus Cattle Evaluation											
 TACE TransTasman Angus Cattle Evaluation	Birth Wt.	Milk	200 Wt.	400 Wt.	600 Wt.	Scrotal Size	Carcase Wt.	EMA	Rump Fat	IMF%	
	EBV	+5.3	+20	+61	+108	+143	+1.8	+83	+3.8	-3.7	+1.3
	Acc	88%	67%	81%	80%	85%	83%	71%	69%	71%	71%

Traits Observed: GL,BWT,200WT(x2),400WT,SC,Scan(EMA,Rib,Rump,IMF),Genomics MHF,RGFNumber of Herds: 1, Prog Analysed: 25, Genomic Prog: 0

## RS BANQUET PEGG P110<sup>SV</sup>

HBR

Ident: **VONP110**

Born: **20/03/2018**

AMFU,CAFU,DDFU,NHFU

BANQUET FORBIDABULL F485<sup>PV</sup>

**VONL352 BANQUET LIBERTY L352<sup>PV</sup>**

BANQUET DREAM G489DV

PRIME JUGGERNAUT J15SV

**VONL041 BANQUET LASS L041#**

JACKSON FRONTIER LASS Z8<sup>SV</sup>

Mating Type: Natural

Mid August 2023 TransTasman Angus Cattle Evaluation											
 TACE TransTasman Angus Cattle Evaluation	Birth Wt.	Milk	200 Wt.	400 Wt.	600 Wt.	Scrotal Size	Carcase Wt.	EMA	Rump Fat	IMF%	
	EBV	+6.4	+15	+49	+84	+117	+4.2	+66	+2.6	-4.6	+1.7
	Acc	83%	65%	79%	78%	82%	78%	69%	66%	68%	68%

Traits Observed: BWT,200WT,400WT,600WT,SC,Scan(EMA,Rib,Rump,IMF),Genomics Number of Herds: 1, Prog Analysed: 14, Genomic Prog: 0

## RS BEN NEVIS MYSTIC M97<sup>SV</sup>

HBR

Ident: **NBNM97**

Born: **03/08/2016**

AMFU,CAFU,DDFU,NHFU

WERNER WAR PARTY 2417#

**USA16984170 R B TOUR OF DUTY 177<sup>PV</sup>**

B A LADY 6807 305#

J & C EVIDENCE E11SV

**NBNH6 BEN NEVIS GERANIUM H6#**

BEN NEVIS GERANIUM V29#

Mating Type: AI

Mid August 2023 TransTasman Angus Cattle Evaluation											
 TACE TransTasman Angus Cattle Evaluation	Birth Wt.	Milk	200 Wt.	400 Wt.	600 Wt.	Scrotal Size	Carcase Wt.	EMA	Rump Fat	IMF%	
	EBV	+5.9	+17	+51	+97	+127	+0.9	+84	+8.3	-2.1	+0.0
	Acc	95%	65%	85%	90%	92%	90%	76%	74%	75%	74%

Traits Observed: BWT,400WT(x2),SC,Scan(EMA,Rib,Rump,IMF) Number of Herds: 1, Prog Analysed: 115, Genomic Prog: 2



## RS QUARTER-WAY PERFECTION P184<sup>SV</sup>

HBR

Ident: TLHP184

Born: 26/07/2018

AMFU,CAFU,DDFU,NH6%

KC HAAS GPS#

**DXTK002 TEXAS MOUNT K002<sup>PV</sup>**

TEXAS UNDINE Z183PV

BANQUET DANCEY D271SV

**TLHJ12 QUARTER-WAY JACINDA J12#**

QUARTER-WAY VINNIE C50#

Mating Type: AI

Mid August 2023 TransTasman Angus Cattle Evaluation											
 TACE TransTasman Angus Cattle Evaluation	Birth Wt.	Milk	200 Wt.	400 Wt.	600 Wt.	Scrotal Size	Carcase Wt.	EMA	Rump Fat	IMF%	
	EBV	+4.7	+10	+48	+95	+129	+2.6	+67	+1.8	+0.4	+0.3
	Acc	82%	64%	78%	78%	82%	81%	70%	67%	69%	69%

Traits Observed: GL,BWT,400WT,600WT,SC,Scan(EMA,Rib,Rump,IMF),Genomics Number of Herds: 1, Prog Analysed: 10, Genomic Prog: 0

## RS QUARTER-WAY QUAD Q11<sup>PV</sup>

HBR

Ident: TLHQ11

Born: 04/04/2019

AMFU,CAFU,DDFU,NHFU

R B TOUR OF DUTY 177<sup>PV</sup>

**NBNM97 BEN NEVIS MYSTIC M97<sup>SV</sup>**

BEN NEVIS GERANIUM H6#

BANQUET ABERDEEN A349SV

**TLHF49 QUARTER-WAY FRANNIE F49<sup>PV</sup>**

QUARTER-WAY FRAM C1<sup>E</sup>

Mating Type: Natural

Mid August 2023 TransTasman Angus Cattle Evaluation											
 TACE TransTasman Angus Cattle Evaluation	Birth Wt.	Milk	200 Wt.	400 Wt.	600 Wt.	Scrotal Size	Carcase Wt.	EMA	Rump Fat	IMF%	
	EBV	+5.9	+13	+43	+81	+98	+1.9	+57	+9.9	-2.1	+0.6
	Acc	86%	58%	79%	81%	78%	70%	68%	58%	61%	62%

Traits Observed: BWT,SC,Scan(Rib,Rump,IMF),Genomics Number of Herds: 1, Prog Analysed: 19, Genomic Prog: 0

## RS TEXAS REALITY P224<sup>PV</sup>

HBR

Ident: DXTP224

Born: 30/06/2018

AMF,CAF,DDF,NHF,DWF,MAF,MHF,OHF,OSF,RGF

SCHURRTOP REALITY X723#

**NZE14647008839 MATAURI REALITY 839#**

MATAURI 06663#

TEXAS TOTAL H625PV

**DXTM363 TEXAS OMNIA M363<sup>SV</sup>**

TEXAS OMNIA H239#

Mating Type: AI

Mid August 2023 TransTasman Angus Cattle Evaluation											
 TACE TransTasman Angus Cattle Evaluation	Birth Wt.	Milk	200 Wt.	400 Wt.	600 Wt.	Scrotal Size	Carcase Wt.	EMA	Rump Fat	IMF%	
	EBV	+2.4	+9	+52	+94	+121	+4.1	+63	+6.0	+0.7	+1.1
	Acc	95%	71%	89%	91%	89%	85%	76%	73%	74%	74%

Traits Observed: GL,BWT,200WT,400WT,600WT,SC,Scan(EMA,Rib,Rump,IMF),DOC,Genomics MHF,RGF Number of Herds: 3, Prog Analysed: 167, Genomic Prog: 5

## RS TRIO QANTAS Q78<sup>SV</sup>

HBR

Ident: ELYQ78

Born: 16/06/2019

AMF,CAF,DDF,NHF,DWF,MAF,MHF,OHF,OSF,RCG

G A R PROPHET<sup>SV</sup>

USA17960722 BALDRIDGE BEAST MODE B074<sup>PV</sup>

BALDRIDGE ISABEL Y69#

TRIO DOCKLANDS H1PV

ELYL78 TRIO BURNETTE L78#

TRIO BURNETTE E17#

Mating Type: AI

Mid August 2023 TransTasman Angus Cattle Evaluation											
 TACE TransTasman Angus Cattle Evaluation	Birth Wt.	Milk	200 Wt.	400 Wt.	600 Wt.	Scrotal Size	Carcase Wt.	EMA	Rump Fat	IMF%	
	EBV	+6.0	+19	+80	+141	+189	+2.6	+114	-2.1	-1.8	+1.6
	Acc	95%	70%	92%	91%	87%	87%	76%	74%	75%	74%

Traits Observed: 200WT(x2),400WT(x2),SC,Genomics MHF,RCGNumber of Herds: 3, Prog Analysed: 164, Genomic Prog: 38

## RS TURIROA RAGNAR 18P224#

HBR

Ident: NZE15603018P224

Born: 03/09/2018

AMF,CAF,DDF,NHF,DWF,MAF,MHF,OHF,OSF,RCG

MATAURI COMPLETE F010#

NZE15603016M013 TURIROA COMPLETE 16M013#

TURIROA 131003#

TURIROA BLACKHEART 10658#

NZE15603115L090 TURIROA L090#

TURIROA 11861#

Mating Type: Natural

Mid August 2023 TransTasman Angus Cattle Evaluation											
 TACE TransTasman Angus Cattle Evaluation	Birth Wt.	Milk	200 Wt.	400 Wt.	600 Wt.	Scrotal Size	Carcase Wt.	EMA	Rump Fat	IMF%	
	EBV	+4.2	+18	+52	+92	+135	+3.5	+68	+4.3	-0.2	+0.7
	Acc	96%	66%	94%	92%	93%	91%	76%	76%	76%	75%

Traits Observed: BWT,200WT,400WT,600WT,Scan(EMA,Rib,Rump,IMF),Genomics MHF,RCGNumber of Herds: 12, Prog Analysed: 195, Genomic Prog: 69

## RS WATTLETOP MOONSHINE M42<sup>SV</sup>

HBR

Ident: NWPM42

Born: 30/06/2016

AMF,CAF,DDF,NHF,DWF,MAF,MHF,OHF,OSF,RCG

CONNELLY EARNAN 076E<sup>PV</sup>

USA17614813 MUSGRAVE BIG SKY<sup>PV</sup>

SAV PRIMROSE 7861#

WATTLETOP SITZ 458N E111SV

NWPK48 WATTLETOP DANDLOO K48#

WATTLETOP DANDLOO H297#

Mating Type: AI

Mid August 2023 TransTasman Angus Cattle Evaluation											
 TACE TransTasman Angus Cattle Evaluation	Birth Wt.	Milk	200 Wt.	400 Wt.	600 Wt.	Scrotal Size	Carcase Wt.	EMA	Rump Fat	IMF%	
	EBV	+1.3	+32	+43	+83	+96	+1.4	+59	-1.5	+1.2	+3.6
	Acc	97%	88%	95%	96%	95%	95%	84%	83%	83%	82%

Traits Observed: GL,CE,BWT,400WT,SC,Scan(EMA,Rib,Rump,IMF),Genomics MHF,RCGNumber of Herds: 3, Prog Analysed: 306, Genomic Prog: 49



## EBV Quick Reference for Quarterway Angus Bull Sale

Animal Ident	Calving Ease			Birth			Growth				Fertility				Carcass				Other				Structural			Selection Indexes	
	CED	CEM	GL	BW	200	400	600	MCW	Milk	SS	DC	CWT	EMA	Rib	Rump	RBW	IMF	NFI-F	Doc	Claw	Angle	Leg	SA	\$A-L			
1	TLH21S284	-2.3	+0.2	-3.8	+6.0	+54	+98	+135	+141	+10	+2.0	-2.0	+7.1	-1.4	-1.9	+1.2	+0.5	+0.07	+20	-	-	-	\$149	\$300			
2	TLH21S179	+0.7	-0.4	-3.8	+4.9	+59	+108	+144	+136	+18	+2.8	-3.8	+1.2	-0.6	-0.3	+83	+1.4	-0.21	+13	-	-	-	\$176	\$341			
3	TLH21S223	+6.9	+5.2	-5.1	+4.2	+47	+86	+115	+107	+17	+3.1	-2.6	+4.5	+0.1	-1.1	+64	+1.1	+0.10	+16	-	-	-	\$161	\$311			
4	TLH21S237	-2.8	-2.9	-2.6	+6.3	+49	+92	+130	+134	+15	+0.3	-2.8	+3.8	-0.8	-0.3	+80	+0.7	+0.10	+20	-	-	-	\$137	\$277			
5	TLH21S279	-0.9	-1.8	-1.8	+5.8	+44	+78	+105	+105	+14	+2.2	-3.4	+1.6	-0.7	-1.0	+60	+1.6	+0.16	+18	-	-	-	\$126	\$248			
6	TLH21S256	-2.8	-0.2	-3.3	+5.3	+52	+93	+122	+132	+11	+2.2	-1.9	+6.6	-2.5	-3.3	+70	+0.8	-0.10	+17	-	-	-	\$141	\$281			
7	TLH21S298	-1.9	+0.9	-4.0	+6.6	+53	+95	+130	+130	+17	+1.9	-2.4	+4.8	-1.8	-1.6	+78	+0.9	-0.01	+23	-	-	-	\$150	\$293			
8	TLH21S275	-6.0	-5.7	-3.8	+6.7	+49	+86	+114	+110	+13	+2.1	-3.7	+4.6	-0.8	-0.9	+65	+1.0	+0.17	+14	-	-	-	\$126	\$240			
9	TLH21S126	-6.8	-5.7	-3.5	+6.1	+40	+71	+92	+89	+12	+1.5	-3.6	+2.1	+0.1	+0.1	+49	+0.7	-0.1	-	-	-	-	\$99	\$190			
10	TLH21S200	+5.8	+5.8	-0.9	+4.5	+52	+94	+128	+120	+14	+3.2	-2.7	+6.3	-1.3	-2.8	+72	+1.1	-0.09	+22	-	-	-	\$181	\$341			
11	TLH21S174	-1.9	+0.7	-2.9	+4.7	+49	+90	+119	+106	+17	+1.5	-1.8	+3.1	-1.4	-1.3	+65	+1.0	-0.09	+11	-	-	-	\$146	\$269			
12	TLH21S272	-2.2	+1.6	-1.3	+6.2	+45	+86	+105	+102	+18	+3.5	-3.2	+3.9	-2.2	-2.7	+61	+1.1	+0.00	+26	-	-	-	\$136	\$261			
13	TLH21S247	-2.5	+0.7	-4.9	+6.4	+52	+91	+125	+141	+8	+1.9	-1.5	+7.7	-2.3	-3.3	+65	+1.7	-0.1	+18	-	-	-	\$129	\$274			
14	TLH21S286	-1.4	-4.4	-3.6	+4.9	+44	+83	+109	+109	+12	+1.4	-3.3	+0.0	+0.7	+1.6	+58	+0.2	+0.5	+16	-	-	-	\$123	\$248			
15	TLH21S283	-1.8	+1.0	-2.9	+3.5	+44	+83	+103	+88	+21	+2.4	-3.6	-1.9	-0.9	-0.5	+57	+3.0	+0.14	+15	-	-	-	\$137	\$253			
16	TLH21S277	-1.0	-1.3	-3.4	+4.0	+44	+77	+97	+109	+10	+1.0	-3.4	+4.0	-0.4	-0.2	+54	+0.2	-0.04	+18	-	-	-	\$127	\$253			
17	TLH21S280	-1.2	+1.8	-2.0	+6.0	+43	+75	+100	+98	+13	+2.6	-2.2	+4.0	-2.6	-3.4	+54	+0.6	+1.1	+24	-	-	-	\$120	\$234			
18	TLH21S90	+0.2	+1.1	-2.3	+5.5	+44	+83	+109	+105	+13	+2.0	-2.0	+1.8	-0.9	-1.9	+55	+1.8	-0.03	+20	-	-	-	\$124	\$249			
19	TLH21S226	+6.2	+3.4	-7.6	+4.9	+51	+89	+121	+117	+9	+2.8	-3.2	+4.4	+0.6	-0.3	+63	+0.6	+0.7	+20	-	-	-	\$168	\$324			
20	TLH21S300	-3.8	-2.7	-5.4	+6.0	+47	+85	+111	+99	+12	+2.2	-4.9	-0.4	+2.0	+2.6	+62	-0.3	+0.7	+17	-	-	-	\$144	\$266			
21	TLH21S255	+1.5	+3.4	-5.9	+4.1	+46	+81	+110	+115	+9	+3.0	-2.7	+6.7	-1.7	-2.9	+54	+1.5	+0.0	+20	-	-	-	\$137	\$276			
22	TLH21S290	-2.2	-2.4	-3.6	+6.0	+50	+93	+133	+134	+12	+2.4	-2.3	+1.8	-0.8	-0.4	+72	+0.4	+0.9	+14	-	-	-	\$128	\$271			
23	TLH21S270	-2.0	+0.9	-5.1	+6.2	+51	+90	+123	+140	+8	+1.7	-1.4	+7.4	-2.2	-3.2	+64	+1.7	-0.1	+18	-	-	-	\$126	\$270			
24	TLH21S249	+0.2	+2.4	-4.6	+3.8	+46	+83	+106	+106	+12	+3.3	-3.5	+6.5	+0.0	-0.5	+54	+0.9	+0.7	+19	-	-	-	\$154	\$290			
25	TLH21S239	-3.4	-0.7	-2.9	+5.4	+48	+84	+114	+127	+10	+1.4	-2.4	+6.3	-1.4	-1.8	+63	+1.4	-0.1	+0.02	+14	-	-	\$123	\$255			
26	TLH21S299	-3.2	-1.8	-3.6	+6.0	+46	+87	+115	+121	+19	+0.3	-3.0	+2.8	-1.8	-1.5	+72	+0.9	+0.3	+15	-	-	-	\$124	\$252			
27	TLH21S189	+0.9	+2.8	-2.4	+2.3	+35	+72	+84	+74	+26	+1.2	-3.2	+0.0	-0.7	+0.1	+49	+1.6	+0.04	+18	-	-	-	\$122	\$229			
28	TLH21S285	+0.7	+1.5	-4.0	+4.5	+49	+91	+118	+119	+13	+3.7	-2.9	+6.6	-1.0	-1.5	+62	+2.1	+0.3	+19	-	-	-	\$152	\$298			
29	TLH21S307	+0.5	+1.8	-3.9	+4.4	+45	+86	+115	+103	+19	+2.8	-4.3	+6.3	-1.5	-0.5	+59	+0.8	+0.30	+21	-	-	-	\$178	\$316			
30	TLH21S145	-3.5	-3.9	-3.3	+4.7	+35	+62	+73	+66	+13	+1.2	-3.5	+3.1	+0.6	+1.0	+39	+1.1	-0.6	+14	-	-	-	\$107	\$189			
31	TLH21S265	+2.0	+4.4	-2.8	+2.3	+38	+69	+83	+65	+23	+2.1	-4.6	+0.4	-0.3	+0.5	+45	-0.2	+2.3	+13	-	-	-	\$150	\$259			
32	TLH21S202	+3.9	+2.5	-0.7	+4.6	+45	+79	+107	+109	+9	+2.5	-3.8	+3.1	-0.1	-0.7	+56	+1.0	+0.7	+23	-	-	-	\$152	\$294			
33	TLH21S118	+0.9	-1.4	-5.0	+5.5	+43	+81	+112	+111	+12	+1.7	-1.1	+5.4	+0.3	-2.1	+54	+0.6	+0.6	-	-	-	-	\$97	\$219			
34	TLH21S187	+0.9	+0.9	-2.5	+4.9	+44	+76	+107	+106	+9	+2.2	-2.2	+4.7	-0.8	-0.8	+51	+1.0	+0.6	+23	-	-	-	\$131	\$256			
		CE2	+2.2	+2.6	-4.8	+4.0	+90	+117	+100	+17	+2.1	-4.7	+6.3	+0.0	-0.3	+66	+0.5	+0.19	+20	+0.84	+0.97	+1.03	\$A	\$A-L			
																	+2.2	+0.19	+20	+0.84	+0.97	+1.03	\$A	\$A-L			
																	+2.2	+0.19	+20	+0.84	+0.97	+1.03	\$A	\$A-L			

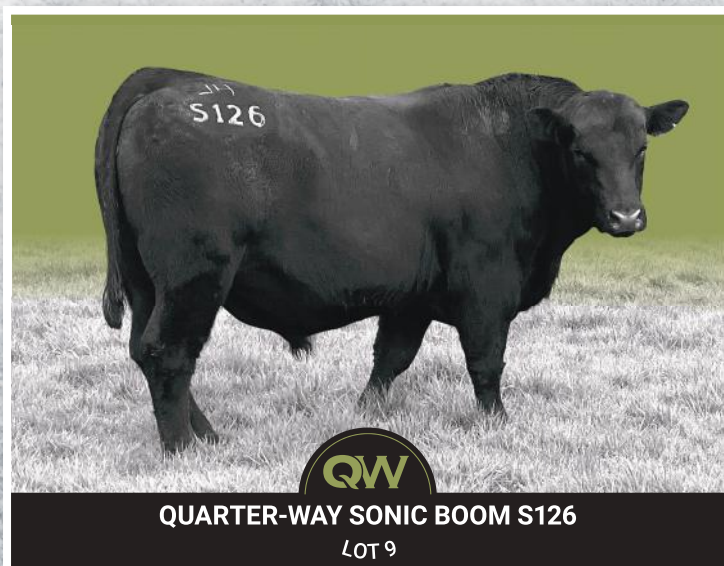
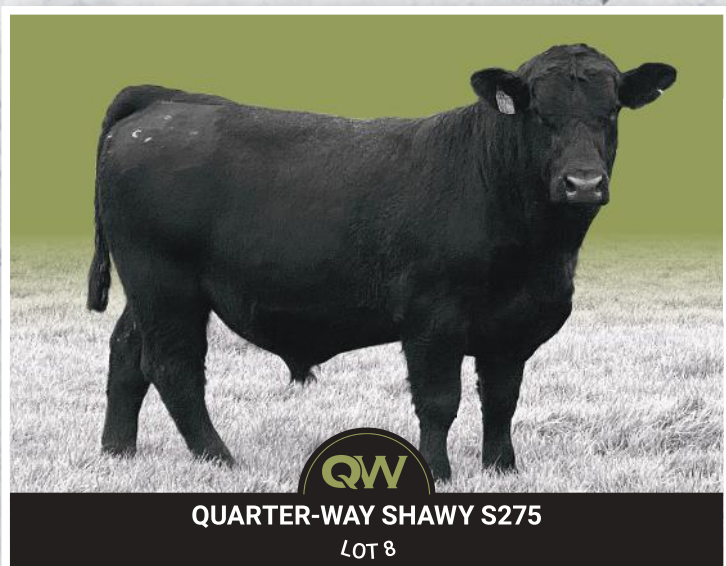


EBV Quick Reference for Quarterway Angus Bull Sale

Animal Ident	Calving Ease				Birth			Growth				Fertility				Carcass				Other				Structural			Selection Indexes	
	CED	CEM	GL	BW	200	400	600	MCW	Milk	SS	DC	CWT	EMA	Rib	Rump	RBV	IMF	NFI-F	Doc	Claw	Angle	Leg	SA	SA-L				
35	TLH21S801	-1.7	+0.3	-5.6	+5.4	+49	+86	+114	+106	+16	+1.9	-3.3	+62	+2.0	-2.2	-2.5	+1.1	+0.2	-0.02	+13	-	-	-	\$143	\$268			
36	TLH21S297	-4.3	-1.6	-1.3	+6.6	+38	+68	+93	+102	+14	+1.5	-2.7	+51	+1.7	-2.8	-3.6	+1.2	+0.7	-0.25	+22	-	-	-	\$86	\$189			
37	TLH21S274	-0.1	+1.3	-2.8	+4.6	+43	+83	+111	+107	+13	+3.4	-2.0	+55	+2.6	-1.1	-0.7	+1.0	-0.1	-0.23	+16	-	-	-	\$119	\$247			
38	TLH21S144	+3.7	+2.0	-5.2	+3.6	+41	+77	+103	+99	+16	+1.9	-3.5	+54	+2.9	-0.6	-0.3	+0.5	+1.3	+0.08	+26	-	-	-	\$143	\$275			
39	TLH21S292	-2.4	+0.3	-0.9	+4.1	+42	+80	+102	+89	+21	+1.4	-2.8	+58	+2.3	-1.7	-1.1	+0.4	+2.0	+0.06	+16	-	-	-	\$137	\$246			
40	TLH21S184	-4.7	-0.8	-2.4	+7.0	+56	+103	+140	+135	+17	+1.8	-2.0	+77	+4.3	-3.2	-3.7	+1.2	+0.8	-0.20	+11	-	-	-	\$149	\$289			
41	TLH21S258	-0.9	-1.0	-4.6	+5.4	+50	+88	+116	+127	+9	+1.4	-2.5	+65	+6.9	-2.3	-3.0	+1.6	+0.1	-0.03	+17	-	-	-	\$141	\$281			
42	TLH21S304	-2.7	-2.4	-1.3	+6.8	+46	+82	+114	+120	+14	+2.9	-2.6	+61	+1.5	-2.9	-3.8	+0.9	+0.8	-0.12	+21	-	-	-	\$106	\$231			
43	TLH21S134	-1.2	+1.7	-3.5	+3.1	+37	+72	+87	+83	+23	+1.2	-4.2	+47	-3.2	-0.3	+0.1	-0.5	+2.1	+0.04	+18	-	-	-	\$114	\$223			
44	TLH21S73	-2.9	-2.2	-2.1	+5.5	+38	+67	+83	+77	+10	+1.6	-3.8	+49	+1.4	-1.5	-1.3	+1.4	-0.7	-0.15	-	-	-	-	\$110	\$204			
45	TLH21S235	-4.5	-3.3	-2.0	+5.9	+37	+72	+92	+99	+17	+0.3	-2.3	+55	+4.3	-1.5	-0.9	+1.4	-0.1	-0.07	+18	-	-	-	\$97	\$198			
46	TLH21S294	-2.2	-0.9	-2.9	+4.7	+44	+85	+111	+108	+16	+2.3	-3.2	+59	-0.3	-0.2	+0.6	+0.1	+1.0	-0.26	+12	-	-	-	\$124	\$250			
47	TLH21S306	-3.2	+0.1	-2.6	+4.9	+35	+64	+82	+91	+14	+0.4	-2.6	+47	+2.0	-1.8	-1.3	+1.1	+0.2	-0.11	+17	-	-	-	\$89	\$187			
48	TLH21S230	+5.5	+4.5	-5.6	+3.7	+50	+90	+113	+109	+11	+2.6	-3.3	+64	+3.9	+0.0	-0.6	+0.6	+1.1	-0.03	+23	-	-	-	\$174	\$326			
49	TLH21S308	+1.5	+1.9	-4.2	+4.3	+44	+82	+109	+121	+12	+1.7	-2.3	+58	+6.7	-1.2	-1.8	+1.4	+0.4	-0.03	+18	-	-	-	\$133	\$275			
50	TLH22T11	-5.6	-2.4	-1.8	+7.2	+60	+100	+130	+122	+14	+1.7	-4.1	+72	+5.5	-2.5	-2.1	+0.6	+1.8	-0.01	+22	-	-	-	\$184	\$319			
51	TLH22T36	+2.9	+3.5	-7.7	+4.9	+60	+106	+141	+124	+16	+2.0	-2.8	+82	+1.9	-0.8	-0.9	+0.0	+1.0	-0.31	+19	-	-	-	\$184	\$343			
52	TLH22T90	-3.3	+0.6	-2.5	+6.3	+58	+98	+120	+107	+16	+2.5	-4.0	+62	+3.0	-1.4	-1.4	+0.2	+2.0	-0.01	+29	-	-	-	\$183	\$316			
53	TLH22T94	-0.3	-1.6	-2.5	+4.9	+51	+88	+110	+100	+16	+1.3	-4.1	+57	+0.9	-1.1	-0.7	-0.2	+2.5	+0.13	+26	-	-	-	\$167	\$295			
54	TLH22T212	-2.8	-2.3	-3.6	+5.1	+39	+70	+85	+84	+18	+1.1	-2.9	+49	+3.7	-0.7	-1.3	+0.7	+0.9	-0.04	+23	-	-	-	\$112	\$209			
55	TLH22T221	+6.0	+3.8	-3.0	+2.6	+41	+73	+102	+88	+19	+2.1	-3.6	+52	+3.6	-0.4	+0.0	+0.4	+1.9	+0.06	+19	-	-	-	\$160	\$290			
56	TLH22T353	+3.5	+2.0	-7.5	+4.8	+51	+100	+126	+116	+18	+1.8	-4.9	+65	+1.8	+1.7	+2.0	-0.1	+0.8	+0.48	+22	-	-	-	\$184	\$344			
57	TLH22T306	-6.6	-2.0	+0.1	+6.6	+46	+85	+107	+103	+11	+1.5	-3.8	+64	+4.1	-1.3	-1.0	+0.8	+1.4	-0.05	+12	-	-	-	\$142	\$255			
58	TLH22T88	-2.1	-0.3	-2.0	+5.5	+51	+87	+111	+112	+13	+2.4	-3.7	+52	+2.3	-1.1	-0.3	+0.0	+2.2	+0.14	+16	-	-	-	\$153	\$285			
59	TLH22T115	-13.4	-5.1	-3.4	+8.1	+40	+70	+91	+104	+9	+1.1	-2.7	+46	+4.5	-1.6	-1.8	+1.2	+0.3	+0.03	-	-	-	-	\$70	\$150			
60	TLH22T402	-4.4	-4.7	-4.1	+6.5	+47	+89	+119	+128	+14	+2.2	-1.8	+63	+0.9	-2.7	-3.1	+1.1	-0.1	-0.11	-	-	-	-	\$95	\$219			
61	TLH22T293	+0.8	-1.2	-5.7	+4.9	+40	+73	+97	+95	+17	+1.3	-3.1	+50	+2.0	-1.5	-1.8	+0.9	+0.1	-0.08	-	-	-	-	\$113	\$228			







## 1 QUARTER-WAY SCHOOLMASTER S284# HBR

Ident: TLH21S284

Born: 05/10/2021

AMFU,CAFU,DDFU,NHFU

MILWILLAH KRAKATOA K92<sup>PV</sup>  
**CMDP105 MERRIDALE PORT P105<sup>PV</sup>**  
 MERRIDALE DREAM M103PV  
 QUARTER-WAY KINNARD K75SV  
**TLHN36 QUARTER-WAY NERIDA N36#**  
 QUARTER-WAY ELVIE E84#

*Schoolmaster is the first of a strong run of high performance sires by Merridale Port. +128 600 dw, with a good carcass weight. Great raw data. From an older cow.*

Mating Type: **Natural** Pen: **1** Purchaser:..... \$.....

Mid August 2023 TransTasman Angus Cattle Evaluation											
TACE TransTasman Angus Cattle Evaluation	Birth Wt.	Milk	200 Wt.	400 Wt.	600 Wt.	Scrotal Size	Carcass Wt.	EMA	Rump Fat	IMF%	
	EBV	<b>+6.0</b>	<b>+10</b>	<b>+54</b>	<b>+98</b>	<b>+135</b>	<b>+2.0</b>	<b>+77</b>	<b>+7.1</b>	<b>-1.9</b>	<b>+0.5</b>
	Acc	73%	43%	64%	64%	72%	70%	55%	48%	52%	48%

Traits Observed: BWT,600WT,SC,Scan(EMA,Rib,Rump,IMF) Number of Herds: 0, Prog Analysed: 0, Genomic Prog: 0

## 2 QUARTER-WAY SANDRINGHAM S179# HBR

Ident: TLH21S179

Born: 18/08/2021

AMFU,CAFU,DD6%,NHFU

BALDRIDGE BEAST MODE B074<sup>PV</sup>  
**ELYQ78 TRIO QANTAS Q78<sup>SV</sup>**  
 TRIO BURNETTE L78#  
 PEAKES GABBA K556SV  
**TLHP15 QUARTER-WAY PARNELLA P15#**  
 QUARTER-WAY MARYLOU M77#

*Trio Qantas son out of a Peakes Gabba female. Fantastic spread of figures for a strong meaty young bull.*

Mating Type: **AI** Pen: **1** Purchaser:..... \$.....

Mid August 2023 TransTasman Angus Cattle Evaluation											
TACE TransTasman Angus Cattle Evaluation	Birth Wt.	Milk	200 Wt.	400 Wt.	600 Wt.	Scrotal Size	Carcass Wt.	EMA	Rump Fat	IMF%	
	EBV	<b>+4.9</b>	<b>+18</b>	<b>+59</b>	<b>+108</b>	<b>+144</b>	<b>+2.8</b>	<b>+83</b>	<b>+1.2</b>	<b>-0.3</b>	<b>+1.4</b>
	Acc	74%	47%	67%	67%	72%	72%	57%	51%	55%	52%

Traits Observed: GL,BWT,600WT,SC,Scan(EMA,Rib,Rump,IMF) Number of Herds: 0, Prog Analysed: 0, Genomic Prog: 0

## 3 QUARTER-WAY SOMERSET S223# HBR

Ident: TLH21S223

Born: 28/08/2021

AMFU,CAFU,DDFU,NHFU

MATAURI REALITY 839#  
**DXTP224 TEXAS REALITY P224<sup>PV</sup>**  
 TEXAS OMNIA M363SV  
 PATHFINDER GOLDMARK D189PV  
**TLHP72 QUARTER-WAY PETRONILLA P72#**  
 QUARTER-WAY C32#

*Top of the class Texas Reality son, from a Pathfinder Goldmark daughter. Somerset carries a lot of presence. Power of the pedigree. Strong, meaty young bull. Fantastic temperament.*

Mating Type: **Natural** Pen: **1** Purchaser:..... \$.....

Mid August 2023 TransTasman Angus Cattle Evaluation											
TACE TransTasman Angus Cattle Evaluation	Birth Wt.	Milk	200 Wt.	400 Wt.	600 Wt.	Scrotal Size	Carcass Wt.	EMA	Rump Fat	IMF%	
	EBV	<b>+4.2</b>	<b>+17</b>	<b>+47</b>	<b>+86</b>	<b>+115</b>	<b>+3.1</b>	<b>+64</b>	<b>+4.5</b>	<b>-1.1</b>	<b>+1.1</b>
	Acc	73%	50%	67%	68%	73%	71%	58%	51%	55%	53%

Traits Observed: BWT,600WT(x2),SC,Scan(EMA,Rib,Rump,IMF) Number of Herds: 0, Prog Analysed: 0, Genomic Prog: 0



## 4 QUARTER-WAY STEELTON S237#

HBR

Ident: **TLH21S237**

Born: **02/09/2021**

**AMFU,CAFU,DDFU,NHFU**

R B TOUR OF DUTY 177<sup>PV</sup>  
**NBNM97 BEN NEVIS MYSTIC M97<sup>SV</sup>**  
 BEN NEVIS GERANIUM H6#

CLUDEN NEWRY GLORY G13SV  
**TLHK35 QUARTER-WAY KALINDA K35#**  
 QUARTER-WAY GUILLENA G77#

*Steelton is a powerful young bull, with a great set of figures and raw data to back him up. Early maturing meaty bull from an older cow with exceptional pedigree.*

Mating Type: **Natural** Pen: **1** Purchaser:..... \$.....

Mid August 2023 TransTasman Angus Cattle Evaluation											
 TACE TransTasman Angus Cattle Evaluation	Birth Wt.	Milk	200 Wt.	400 Wt.	600 Wt.	Scrotal Size	Carcase Wt.	EMA	Rump Fat	IMF%	
	EBV	+6.3	+15	+49	+92	+130	+0.3	+80	+3.8	-0.3	+0.7
	Acc	74%	43%	67%	68%	73%	73%	58%	52%	55%	52%

Traits Observed: BWT,600WT,SC,Scan(EMA,Rib,Rump,IMF) Number of Herds: 0, Prog Analysed: 0, Genomic Prog: 0

## 5 QUARTER-WAY SCAR S279#

HBR

Ident: **TLH21S279**

Born: **02/10/2021**

**AMFU,CAFU,DDFU,NHFU**

BANQUET LIBERTY L352<sup>PV</sup>  
**VONP110 BANQUET PEGG P110<sup>SV</sup>**  
 BANQUET LASS L041#

QUARTER-WAY KELVIN K23SV  
**TLHM91 QUARTER-WAY MELBA M91#**  
 QUARTER-WAY KIM K155#

*Scar shows a lot of class. A large meaty bull with a lot of muscle coverage. Great raw data and strong maternal link.*

Mating Type: **Natural** Pen: **1** Purchaser:..... \$.....

Mid August 2023 TransTasman Angus Cattle Evaluation											
 TACE TransTasman Angus Cattle Evaluation	Birth Wt.	Milk	200 Wt.	400 Wt.	600 Wt.	Scrotal Size	Carcase Wt.	EMA	Rump Fat	IMF%	
	EBV	+5.8	+14	+44	+78	+105	+2.2	+60	+1.6	-1.0	+1.6
	Acc	72%	44%	64%	64%	71%	70%	55%	48%	52%	48%

Traits Observed: BWT,600WT,SC,Scan(EMA,Rib,Rump,IMF) Number of Herds: 0, Prog Analysed: 0, Genomic Prog: 0

## 6 QUARTER-WAY SUMMERSIDE S256#

HBR

Ident: **TLH21S256**

Born: **16/09/2021**

**AMFU,CAFU,DDFU,NHFU**

MILWILLAH KRAKATOA K92<sup>PV</sup>  
**CMDP105 MERRIDALE PORT P105<sup>PV</sup>**  
 MERRIDALE DREAM M103PV

IRELANDS HIDDEN H446PV  
**TLHN114 QUARTER-WAY NOTABLE N114#**  
 QUARTER-WAY GWENDOLEN G84#

*Merridale Port son with great set of EBV's and raw data. Long, deep bull with great structure across the shoulders and rump. Meat machine.*

Mating Type: **Natural** Pen: **1** Purchaser:..... \$.....

Mid August 2023 TransTasman Angus Cattle Evaluation											
 TACE TransTasman Angus Cattle Evaluation	Birth Wt.	Milk	200 Wt.	400 Wt.	600 Wt.	Scrotal Size	Carcase Wt.	EMA	Rump Fat	IMF%	
	EBV	+5.3	+11	+52	+93	+122	+2.2	+70	+6.6	-3.3	+0.8
	Acc	72%	45%	65%	65%	72%	71%	56%	49%	53%	50%

Traits Observed: BWT,600WT(x2),SC,Scan(EMA,Rib,Rump,IMF) Number of Herds: 0, Prog Analysed: 0, Genomic Prog: 0



## 7 QUARTER-WAY SECULAR S298#

HBR

Ident: **TLH21S298**

Born: **12/10/2021**

**AMFU,CAFU,DDFU,NHFU**

R B TOUR OF DUTY 177<sup>PV</sup>  
**NBNM97 BEN NEVIS MYSTIC M97<sup>SV</sup>**  
 BEN NEVIS GERANIUM H6#

MERCHISTON GENERATE 243#  
**TLHL54 QUARTER-WAY LIDDY L54#**  
 QUARTER-WAY GWYNNE G87#

*Secular is our second Mystic son on offer in this pen. These young sires do not disappoint. Early maturing, meaty bulls displaying strength and structure.*

Mating Type: **Natural** Pen: **1** Purchaser:..... \$.....

Mid August 2023 TransTasman Angus Cattle Evaluation											
	Birth Wt.	Milk	200 Wt.	400 Wt.	600 Wt.	Scrotal Size	Carcase Wt.	EMA	Rump Fat	IMF%	
	EBV	+6.6	+17	+53	+95	+130	+1.9	+78	+4.8	-1.6	+0.9
	Acc	74%	45%	67%	68%	73%	72%	59%	52%	55%	52%

Traits Observed: BWT,600WT(x2),SC,Scan(EMA,Rib,Rump,IMF) Number of Herds: 0, Prog Analysed: 0, Genomic Prog: 0

## 8 QUARTER-WAY SHAWY S275#

HBR

Ident: **TLH21S275**

Born: **01/10/2021**

**AMFU,CAFU,DDFU,NHFU**

MERCHISTON STEAKHOUSE 489#  
**TLHP29 QUARTER-WAY PASCAL P29<sup>SV</sup>**  
 QUARTER-WAY BONNIE B74#

IRELANDS GALAXY G43SV  
**TLHN39 QUARTER-WAY NESSA N39#**  
 QUARTER-WAY TE-FE D60#

*Homebred Pascal is a clone of his sire Merchiston Steakhouse, and his sons are no exceptional. Moderate framed Shawy has a gold plated pedigree. Terrific young bull.*

Mating Type: **Natural** Pen: **2** Purchaser:..... \$.....

Mid August 2023 TransTasman Angus Cattle Evaluation											
	Birth Wt.	Milk	200 Wt.	400 Wt.	600 Wt.	Scrotal Size	Carcase Wt.	EMA	Rump Fat	IMF%	
	EBV	+6.7	+13	+49	+86	+114	+2.1	+65	+4.6	-0.9	-0.7
	Acc	73%	48%	66%	66%	73%	72%	58%	51%	55%	53%

Traits Observed: BWT,600WT,SC,Scan(EMA,Rib,Rump,IMF) Number of Herds: 0, Prog Analysed: 0, Genomic Prog: 0

## 9 QUARTER-WAY SONIC BOOM S126#

HBR

Ident: **TLH21S126**

Born: **15/07/2021**

**AMFU,CAFU,DDFU,NHFU**

MERCHISTON STEAKHOUSE 489#  
**TLHP29 QUARTER-WAY PASCAL P29<sup>SV</sup>**  
 QUARTER-WAY BONNIE B74#  
 QUARTER-WAY KINGSWELL K73SV  
**TLHN217 QUARTER-WAY OCASEY N217#**  
 QUARTER-WAY HENNI H43#

*Full of class. Top young bull by Quarterway Pascal, out of a Frannie granddaughter. Strong pedigrees for an impressive young bull. Moderate framed meaty bull.*

Mating Type: **Natural** Pen: **2** Purchaser:..... \$.....

Mid August 2023 TransTasman Angus Cattle Evaluation											
	Birth Wt.	Milk	200 Wt.	400 Wt.	600 Wt.	Scrotal Size	Carcase Wt.	EMA	Rump Fat	IMF%	
	EBV	+6.1	+12	+40	+71	+92	+1.5	+49	+2.1	+0.1	-0.1
	Acc	71%	43%	58%	58%	59%	53%	50%	45%	47%	47%

Traits Observed: BWT Number of Herds: 0, Prog Analysed: 0, Genomic Prog: 0

## 10 QUARTER-WAY SEYMOUR S200# HBR

Ident: **TLH21S200**

Born: **23/08/2021**

**AMFU,CAFU,DD3%,NHFU**

MATAURI REALITY 839#  
**DXTP224 TEXAS REALITY P224<sup>PV</sup>**  
 TEXAS OMNIA M363SV

PATHFINDER GOLDMARK L1243PV  
**TLHP1 QUARTER-WAY PAIGE P1#**  
 QUARTER-WAY LACHINA L136#

*Seymour is a fantastic young bull with low BW and good DW's. The dam pedigree has phenomenal strength, Goldmark/Generate cross. This lad will add meat to your calves.*

Mating Type: **AI** Pen: **2** Purchaser:..... \$.....

Mid August 2023 TransTasman Angus Cattle Evaluation										
TACE	Birth Wt.	Milk	200 Wt.	400 Wt.	600 Wt.	Scrotal Size	Carcase Wt.	EMA	Rump Fat	IMF%
EBV	+4.5	+14	+52	+94	+128	+3.2	+72	+6.3	-2.8	+1.1
Acc	73%	47%	67%	67%	72%	72%	57%	50%	54%	51%

Traits Observed: GL,BWT,600WT,SC,Scan(EMA,Rib,Rump,IMF) Number of Herds: 0, Prog Analysed: 0, Genomic Prog: 0

## 11 QUARTER-WAY SALSBUURY S174# HBR

Ident: **TLH21S174**

Born: **13/08/2021**

**AMFU,CAFU,DDFU,NH3%**

BEN NEVIS METAMORPHIC M51<sup>SV</sup>  
**VONP306 BANQUET PAXMAN P306<sup>SV</sup>**  
 BANQUET TABERNACLE J245#

BANQUET JUBILEE J562PV  
**TLHM152 QUARTER-WAY MANDY M152#**  
 QUARTER-WAY JENNIFER J64#

*Banquet Paxman son out of an older cow. We embrace longevity in our cows, we need to put animals out because of old age, not breakdowns. Thick young bull on a moderate frame.*

Mating Type: **Natural** Pen: **2** Purchaser:..... \$.....

Mid August 2023 TransTasman Angus Cattle Evaluation										
TACE	Birth Wt.	Milk	200 Wt.	400 Wt.	600 Wt.	Scrotal Size	Carcase Wt.	EMA	Rump Fat	IMF%
EBV	+4.7	+17	+49	+90	+119	+1.5	+65	+3.1	-1.3	+1.0
Acc	73%	45%	65%	65%	72%	71%	56%	49%	53%	49%

Traits Observed: BWT,600WT,SC,Scan(EMA,Rib,Rump,IMF) Number of Herds: 0, Prog Analysed: 0, Genomic Prog: 0

## 12 QUARTER-WAY SATELLITE S272# HBR

Ident: **TLH21S272**

Born: **26/09/2021**

**AMFU,CAFU,DDFU,NHFU**

BANQUET LIBERTY L352<sup>PV</sup>  
**VONP110 BANQUET PEGG P110<sup>SV</sup>**  
 BANQUET LASS L041#

MERCHISTON GENERATE 243#  
**TLHL71 QUARTER-WAY LINDA L71#**  
 QUARTER-WAY GEORGIE G91#

*Satellite is a Banquet Pegg son out of a Merchiston Generate daughter. Great structure, stong legs and carrying a lot of muscle.*

Mating Type: **Natural** Pen: **2** Purchaser:..... \$.....

Mid August 2023 TransTasman Angus Cattle Evaluation										
TACE	Birth Wt.	Milk	200 Wt.	400 Wt.	600 Wt.	Scrotal Size	Carcase Wt.	EMA	Rump Fat	IMF%
EBV	+6.2	+18	+45	+86	+105	+3.5	+61	+3.9	-2.7	+1.1
Acc	72%	48%	66%	66%	72%	71%	57%	49%	53%	50%

Traits Observed: BWT,600WT,SC,Scan(EMA,Rib,Rump,IMF) Number of Herds: 0, Prog Analysed: 0, Genomic Prog: 0

## 13 QUARTER-WAY STONEWALL S247#

HBR

Ident: **TLH21S247**

Born: **10/09/2021**

**AMFU,CAFU,DDFU,NHFU**

MILWILLAH KRAKATOA K92<sup>PV</sup>  
**CMDP105 MERRIDALE PORT P105<sup>PV</sup>**  
 MERRIDALE DREAM M103PV

BANQUET JUPITER J263SV  
**TLHM115 QUARTER-WAY MILLICENT M115#**  
 QUARTER-WAY JAIMI J31#

*Stonewall is another Merridale Port son with the same characteristics as his brothers. Long, deep, strong head and smooth shoulders. Great 600 DW.*

Mating Type: **Natural** Pen: **2** Purchaser:..... \$.....

Mid August 2023 TransTasman Angus Cattle Evaluation											
 TACE TransTasman Angus Cattle Evaluation	Birth Wt.	Milk	200 Wt.	400 Wt.	600 Wt.	Scrotal Size	Carcase Wt.	EMA	Rump Fat	IMF%	
	EBV	+6.4	+8	+52	+91	+125	+1.9	+65	+7.7	-3.3	-0.1
	Acc	70%	47%	63%	63%	69%	68%	54%	48%	52%	50%

Traits Observed: BWT,600WT,SC,Scan(EMA,Rib,Rump,IMF) Number of Herds: 0, Prog Analysed: 0, Genomic Prog: 0

## 14 QUARTER-WAY SCORPIO S286#

HBR

Ident: **TLH21S286**

Born: **05/10/2021**

**AMFU,CAFU,DDFU,NH3%**

TEXAS MOUNT K002<sup>PV</sup>  
**TLHP184 QUARTER-WAY PERFECTION P184<sup>SV</sup>**  
 QUARTER-WAY JACINDA J12#

CLUNIE RANGE LOGAN L1SV  
**TLHP186 QUARTER-WAY PENNY JANE P186#**  
 QUARTER-WAY KEIKO K71#

*Sire Quarterway Perfection, is a Texas Mount son, and has grown out into a bull with a lot of impact. His progeny hit the ground running and grow out into strong, meaty animals.*

Mating Type: **Natural** Pen: **2** Purchaser:..... \$.....

Mid August 2023 TransTasman Angus Cattle Evaluation											
 TACE TransTasman Angus Cattle Evaluation	Birth Wt.	Milk	200 Wt.	400 Wt.	600 Wt.	Scrotal Size	Carcase Wt.	EMA	Rump Fat	IMF%	
	EBV	+4.9	+12	+44	+83	+109	+1.4	+58	+0.0	+1.6	+0.5
	Acc	70%	46%	64%	65%	71%	71%	56%	49%	53%	50%

Traits Observed: BWT,600WT,SC,Scan(EMA,Rib,Rump,IMF) Number of Herds: 0, Prog Analysed: 0, Genomic Prog: 0

## 15 QUARTER-WAY STEAMBOAT S283#

HBR

Ident: **TLH21S283**

Born: **01/09/2021**

**AMFU,CAFU,DDFU,NHFU**

MUSGRAVE BIG SKY<sup>PV</sup>  
**NWPM42 WATTLETOP MOONSHINE M42<sup>SV</sup>**  
 WATTLETOP DANDLOO K48#

QUARTER-WAY HUEY H88SV  
**TLHL112 QUARTER-WAY LOUISA L112#**  
 QUARTER-WAY HAYLEY H1#

*Cross a strong dam pedigree with Wattletop Moonshine and you get Steamboat. Strong moderate framed young bull with great structure, temperament and muscle coverage.*

Mating Type: **Natural** Pen: **3** Purchaser:..... \$.....

Mid August 2023 TransTasman Angus Cattle Evaluation											
 TACE TransTasman Angus Cattle Evaluation	Birth Wt.	Milk	200 Wt.	400 Wt.	600 Wt.	Scrotal Size	Carcase Wt.	EMA	Rump Fat	IMF%	
	EBV	+3.5	+21	+44	+83	+103	+2.4	+57	-1.9	-0.5	+3.0
	Acc	74%	52%	68%	69%	74%	73%	60%	54%	57%	53%

Traits Observed: BWT,600WT,SC,Scan(EMA,Rib,Rump,IMF) Number of Herds: 0, Prog Analysed: 0, Genomic Prog: 0



## 16 QUARTER-WAY SCANDAL S277# HBR

Ident: TLH21S277

Born: 12/09/2021

AMFU,CAFU,DDFU,NHFU

MILWILLAH KRAKATOA K92<sup>PV</sup>  
**CMDP105 MERRIDALE PORT P105<sup>PV</sup>**  
 MERRIDALE DREAM M103PV

CLUNIE RANGE LOGAN L1SV  
**TLHN130 QUARTER-WAY NUTELLA N130#**  
 QUARTER-WAY KRISTEN K162#

*Scandal is another Merridale Port son. Thick hindquarters follow smooth shoulders for easy calving. Great pedigree. From a strong dam.*

Mating Type: **Natural** Pen: **3** Purchaser:..... \$.....

Mid August 2023 TransTasman Angus Cattle Evaluation											
TACE	Birth Wt.	Milk	200 Wt.	400 Wt.	600 Wt.	Scrotal Size	Carcase Wt.	EMA	Rump Fat	IMF%	
	EBV	+4.0	+10	+44	+77	+97	+1.0	+54	+4.0	-0.2	+0.2
	Acc	73%	47%	66%	66%	73%	71%	57%	50%	54%	51%

Traits Observed: BWT,600WT,SC,Scan(EMA,Rib,Rump,IMF) Number of Herds: 0, Prog Analysed: 0, Genomic Prog: 0

## 17 QUARTER-WAY SCEPTIC S280# HBR

Ident: TLH21S280

Born: 02/10/2021

AMFU,CAFU,DDFU,NHFU

BANQUET LIBERTY L352<sup>PV</sup>  
**VONP110 BANQUET PEGG P110<sup>SV</sup>**  
 BANQUET LASS L041#

MERCHISTON GENERATE 243#  
**TLHL68 QUARTER-WAY LILY L68#**  
 QUARTER-WAY BAN D62#

*Young Banquet Pegg son, out of Merchiston Generate daughter Lily. Meaty and correct.*

Mating Type: **Natural** Pen: **3** Purchaser:..... \$.....

Mid August 2023 TransTasman Angus Cattle Evaluation											
TACE	Birth Wt.	Milk	200 Wt.	400 Wt.	600 Wt.	Scrotal Size	Carcase Wt.	EMA	Rump Fat	IMF%	
	EBV	+6.0	+13	+43	+75	+100	+2.6	+54	+4.0	-3.4	+0.7
	Acc	72%	48%	65%	66%	72%	71%	57%	49%	53%	50%

Traits Observed: BWT,600WT,SC,Scan(EMA,Rib,Rump,IMF) Number of Herds: 0, Prog Analysed: 0, Genomic Prog: 0

## 18 QUARTER-WAY SHELDON S90# HBR

Ident: TLH21S90

Born: 29/06/2021

AMFU,CAFU,DDFU,NHFU

KAHARAU CLASSIC 10-378#  
**NZE17683017444 KAHARAU CLASS MAN 17-444#**  
 GOLDWHN JESS H601#

PATHFINDER GOLDMARK L1243PV  
**TLHP4 QUARTER-WAY PAMMI P4#**  
 QUARTER-WAY LORI L95#

*Kaharau Class Man, Pathfinder Goldmark, Merchiston Generate, young Sheldon has pedigree by the bucket load. Meat, meat and more meat.*

Mating Type: **AI** Pen: **3** Purchaser:..... \$.....

Mid August 2023 TransTasman Angus Cattle Evaluation											
TACE	Birth Wt.	Milk	200 Wt.	400 Wt.	600 Wt.	Scrotal Size	Carcase Wt.	EMA	Rump Fat	IMF%	
	EBV	+5.5	+13	+44	+83	+109	+2.0	+55	+1.8	-1.9	+1.1
	Acc	73%	47%	66%	67%	71%	57%	56%	51%	53%	52%

Traits Observed: GL,BWT,600WT,Scan(EMA,Rib,Rump,IMF) Number of Herds: 0, Prog Analysed: 0, Genomic Prog: 0

## 19 QUARTER-WAY SORELL S226#

HBR

Ident: **TLH21S226**

Born: **28/08/2021**

**AMFU,CAFU,DDFU,NHFU**

MATAURI REALITY 839#  
**DXTP224 TEXAS REALITY P224<sup>PV</sup>**  
 TEXAS OMNIA M363SV

IRELANDS GALAXY G43SV  
**TLHN7 QUARTER-WAY NADINE N7#**  
 QUARTER-WAY JERI J84#

*Another Texas Reality son. Moderate framed meaty bull with structure and growth for age. Impressive young bull.*

Mating Type: **AI** Pen: **3** Purchaser:..... \$.....

Mid August 2023 TransTasman Angus Cattle Evaluation											
	Birth Wt.	Milk	200 Wt.	400 Wt.	600 Wt.	Scrotal Size	Carcase Wt.	EMA	Rump Fat	IMF%	
	EBV	+4.9	+9	+51	+89	+121	+2.8	+63	+4.4	-0.3	+0.7
	Acc	74%	51%	68%	68%	74%	72%	59%	53%	56%	55%

Traits Observed: GL,BWT,600WT,SC,Scan(EMA,Rib,Rump,IMF) Number of Herds: 0, Prog Analysed: 0, Genomic Prog: 0

## 20 QUARTER-WAY SELECT S300#

HBR

Ident: **TLH21S300**

Born: **13/10/2021**

**AMFU,CAFU,DDFU,NHFU**

MERCHISTON STEAKHOUSE 489#  
**TLHP29 QUARTER-WAY PASCAL P29<sup>SV</sup>**  
 QUARTER-WAY BONNIE B74#

ASCOT HALLMARK H147PV  
**TLHP110 QUARTER-WAY POLLY P110#**  
 QUARTER-WAY KALA K3#

*Select is an early maturing Quarterway Pascal son. Steakhouse and Ascot Hallmark add to his impressive pedigree. Great figures, structure and temperament.*

Mating Type: **Natural** Pen: **3** Purchaser:..... \$.....

Mid August 2023 TransTasman Angus Cattle Evaluation											
	Birth Wt.	Milk	200 Wt.	400 Wt.	600 Wt.	Scrotal Size	Carcase Wt.	EMA	Rump Fat	IMF%	
	EBV	+6.0	+12	+47	+85	+111	+2.2	+62	-0.4	+2.6	+0.7
	Acc	71%	48%	65%	66%	72%	71%	57%	51%	55%	53%

Traits Observed: BWT,600WT,SC,Scan(EMA,Rib,Rump,IMF) Number of Herds: 0, Prog Analysed: 0, Genomic Prog: 0

## 21 QUARTER-WAY SUMMIT S255#

HBR

Ident: **TLH21S255**

Born: **16/09/2021**

**AMFU,CAFU,DDFU,NHFU**

MILWILLAH KRAKATOA K92<sup>PV</sup>  
**CMDP105 MERRIDALE PORT P105<sup>PV</sup>**  
 MERRIDALE DREAM M103PV

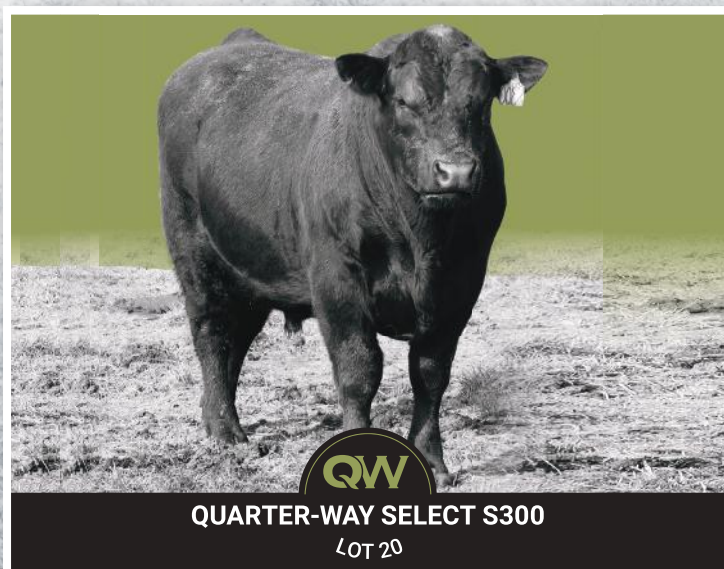
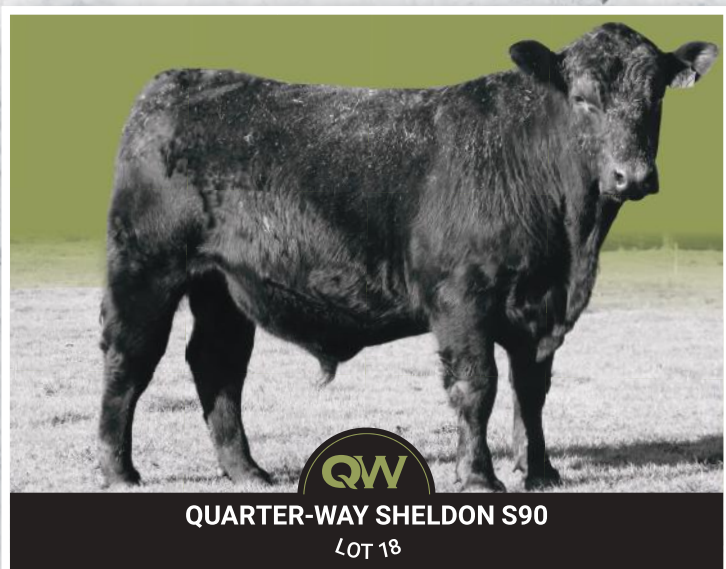
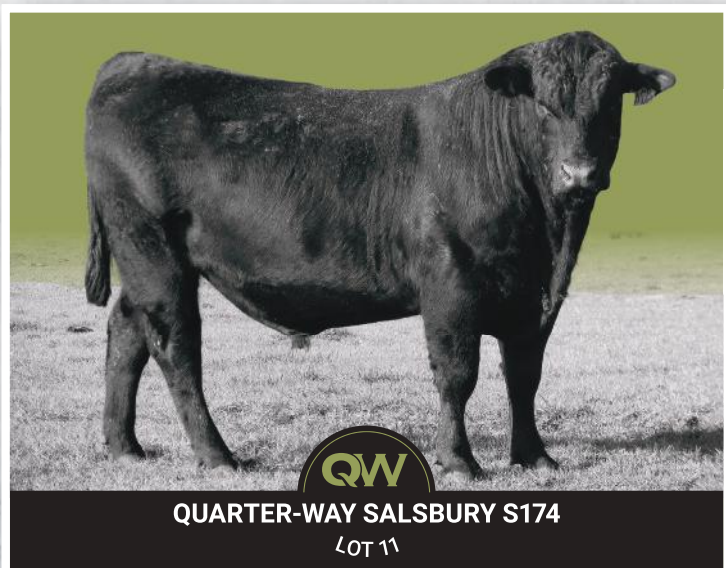
MERCHISTON STOKER 350#  
**TLHM172 QUARTER-WAY MERCY M172#**  
 QUARTER-WAY TIMEY C53#

*Strong figured young bull out of Merridale Port. Dam line goes back to Time Frame and Merchiston Stoker. Strong, meaty and longevity. 600DW.*

Mating Type: **Natural** Pen: **3** Purchaser:..... \$.....

Mid August 2023 TransTasman Angus Cattle Evaluation											
	Birth Wt.	Milk	200 Wt.	400 Wt.	600 Wt.	Scrotal Size	Carcase Wt.	EMA	Rump Fat	IMF%	
	EBV	+4.1	+9	+46	+81	+110	+3.0	+54	+6.7	-2.9	+0.0
	Acc	73%	49%	65%	65%	72%	72%	57%	51%	54%	51%

Traits Observed: BWT,600WT,SC,Scan(EMA,Rib,Rump,IMF) Number of Herds: 0, Prog Analysed: 0, Genomic Prog: 0





## 22 QUARTER-WAY SCORPION S290#

HBR

Ident: **TLH21S290**

Born: **06/10/2021**

**AMFU,CAFU,DDFU,NH3%**

TEXAS MOUNT K002<sup>PV</sup>

**TLHP184 QUARTER-WAY PERFECTION P184<sup>SV</sup>**

QUARTER-WAY JACINDA J12#

PEAKES GABBA K556<sup>SV</sup>

**TLHP24 QUARTER-WAY PATRICE P24#**

QUARTER-WAY MARLENE M74#

*Scorpion is a terrific young moderate framed bull with positive fats and great 600DW. Early maturer with the capacity to put a lot of meat on his calves.*

Mating Type: **Natural**

Pen: **3**

Purchaser:.....

\$.....

Mid August 2023 TransTasman Angus Cattle Evaluation											
 TACE TransTasman Angus Cattle Evaluation	Birth Wt.	Milk	200 Wt.	400 Wt.	600 Wt.	Scrotal Size	Carcase Wt.	EMA	Rump Fat	IMF%	
	EBV	+6.0	+12	+50	+93	+133	+2.4	+72	+1.8	-0.4	+0.9
	Acc	70%	46%	64%	65%	71%	71%	55%	49%	53%	49%

Traits Observed: BWT,600WT,SC,Scan(EMA,Rib,Rump,IMF) Number of Herds: 0, Prog Analysed: 0, Genomic Prog: 0

## 23 QUARTER-WAY SANDSTORM S270#

HBR

Ident: **TLH21S270**

Born: **10/09/2021**

**AMFU,CAFU,DDFU,NHFU**

MILWILLAH KRAKATOA K92<sup>PV</sup>

**CMDP105 MERRIDALE PORT P105<sup>PV</sup>**

MERRIDALE DREAM M103<sup>PV</sup>

BANQUET JUPITER J263<sup>SV</sup>

**TLHM115 QUARTER-WAY MILLICENT M115#**

QUARTER-WAY JAIMI J31#

*Sandstorm is a Merridale Port son. Easy doing, structurally correct young bull with strong data.*

Mating Type: **Natural**

Pen: **4**

Purchaser:.....

\$.....

Mid August 2023 TransTasman Angus Cattle Evaluation											
 TACE TransTasman Angus Cattle Evaluation	Birth Wt.	Milk	200 Wt.	400 Wt.	600 Wt.	Scrotal Size	Carcase Wt.	EMA	Rump Fat	IMF%	
	EBV	+6.2	+8	+51	+90	+123	+1.7	+64	+7.4	-3.2	-0.1
	Acc	70%	47%	63%	63%	69%	68%	54%	48%	52%	50%

Traits Observed: BWT,600WT,SC,Scan(EMA,Rib,Rump,IMF) Number of Herds: 0, Prog Analysed: 0, Genomic Prog: 0

## 24 QUARTER-WAY STURGEON S249#

HBR

Ident: **TLH21S249**

Born: **11/09/2021**

**AMFU,CAFU,DDFU,NHFU**

MILWILLAH KRAKATOA K92<sup>PV</sup>

**CMDP105 MERRIDALE PORT P105<sup>PV</sup>**

MERRIDALE DREAM M103<sup>PV</sup>

MERCHISTON STOKER 350#

**TLHM187 QUARTER-WAY MISTY M187#**

QUARTER-WAY GRIZELLA G71#

*What an elite run of bulls Merridale Port has sired. Sturgeon is no exception. Great structure with a lot of meat coverage. Won't disappoint.*

Mating Type: **Natural**

Pen: **4**

Purchaser:.....

\$.....

Mid August 2023 TransTasman Angus Cattle Evaluation											
 TACE TransTasman Angus Cattle Evaluation	Birth Wt.	Milk	200 Wt.	400 Wt.	600 Wt.	Scrotal Size	Carcase Wt.	EMA	Rump Fat	IMF%	
	EBV	+3.8	+12	+46	+83	+106	+3.3	+54	+6.5	-0.5	+0.9
	Acc	72%	48%	65%	65%	72%	71%	56%	50%	53%	50%

Traits Observed: BWT,600WT,SC,Scan(EMA,Rib,IMF) Number of Herds: 0, Prog Analysed: 0, Genomic Prog: 0

## 25 QUARTER-WAY STIRLING S239# HBR

Ident: **TLH21S239**

Born: **03/09/2021**

**AMFU,CAFU,DDFU,NHFU**

MILWILLAH KRAKATOA K92<sup>PV</sup>  
**CMDP105 MERRIDALE PORT P105<sup>PV</sup>**  
 MERRIDALE DREAM M103PV

*Merridale Port strikes again. Testament to his consistant breeding his sons are standouts. They are sturcturally correct, neat and smooth young bulls with great temperaments and lots of meat.*

IRELANDS GALAXY G43SV  
**TLHN61 QUARTER-WAY NINETTE N61#**  
 QUARTER-WAY ACHELMY D34#

Mating Type: **Natural** Pen: **4** Purchaser:..... \$.....

Mid August 2023 TransTasman Angus Cattle Evaluation											
<b>TACE</b> <small>TransTasman Angus Cattle Evaluation</small>	Birth Wt.	Milk	200 Wt.	400 Wt.	600 Wt.	Scrotal Size	Carcase Wt.	EMA	Rump Fat	IMF%	
	EBV	<b>+5.4</b>	<b>+10</b>	<b>+48</b>	<b>+84</b>	<b>+114</b>	<b>+1.4</b>	<b>+63</b>	<b>+6.3</b>	<b>-1.8</b>	<b>-0.1</b>
	Acc	73%	48%	66%	66%	73%	71%	58%	52%	55%	53%

Traits Observed: BWT,600WT,SC,Scan(EMA,Rib,Rump,IMF) Number of Herds: 0, Prog Analysed: 0, Genomic Prog: 0

## 26 QUARTER-WAY SECURITY S299# HBR

Ident: **TLH21S299**

Born: **13/10/2021**

**AMFU,CAFU,DDFU,NHFU**

R B TOUR OF DUTY 177<sup>PV</sup>  
**NBNM97 BEN NEVIS MYSTIC M97<sup>SV</sup>**  
 BEN NEVIS GERANIUM H6#

*Security is a deep bodied, smooth shouldered young bull, who would compliment any herd. Calving ease and meat.*

QUARTER-WAY JULIUS J118SV  
**TLHM161 QUARTER-WAY MARIAH M161#**  
 QUARTER-WAY KYRIE K134#

Mating Type: **Natural** Pen: **4** Purchaser:..... \$.....

Mid August 2023 TransTasman Angus Cattle Evaluation											
<b>TACE</b> <small>TransTasman Angus Cattle Evaluation</small>	Birth Wt.	Milk	200 Wt.	400 Wt.	600 Wt.	Scrotal Size	Carcase Wt.	EMA	Rump Fat	IMF%	
	EBV	<b>+6.0</b>	<b>+19</b>	<b>+46</b>	<b>+87</b>	<b>+115</b>	<b>+0.3</b>	<b>+72</b>	<b>+2.8</b>	<b>-1.5</b>	<b>+0.3</b>
	Acc	74%	42%	66%	67%	73%	72%	57%	51%	55%	51%

Traits Observed: BWT,600WT,SC,Scan(EMA,Rib,Rump,IMF) Number of Herds: 0, Prog Analysed: 0, Genomic Prog: 0

## 27 QUARTER-WAY SCOTLAND S189# HBR

Ident: **TLH21S189**

Born: **20/08/2021**

**AMFU,CAFU,DDFU,NHFU**

MUSGRAVE BIG SKY<sup>PV</sup>  
**NWPM42 WATTLETOP MOONSHINE M42<sup>SV</sup>**  
 WATTLETOP DANDLOO K48#

*Moderate framed Moonshine son with an impressive dam pedigree. Lower BW with the capacity to grow meat. Well structured young man.*

QUARTER-WAY FRAEM D73SV  
**TLHG91 QUARTER-WAY GEORGIE G91#**  
 QUARTER-WAY V24#

Mating Type: **Natural** Pen: **4** Purchaser:..... \$.....

Mid August 2023 TransTasman Angus Cattle Evaluation											
<b>TACE</b> <small>TransTasman Angus Cattle Evaluation</small>	Birth Wt.	Milk	200 Wt.	400 Wt.	600 Wt.	Scrotal Size	Carcase Wt.	EMA	Rump Fat	IMF%	
	EBV	<b>+2.3</b>	<b>+26</b>	<b>+35</b>	<b>+72</b>	<b>+84</b>	<b>+1.2</b>	<b>+49</b>	<b>+0.0</b>	<b>+0.1</b>	<b>+1.6</b>
	Acc	75%	54%	69%	70%	75%	74%	61%	53%	57%	53%

Traits Observed: BWT,600WT,SC,Scan(EMA,Rib,Rump,IMF) Number of Herds: 0, Prog Analysed: 0, Genomic Prog: 0

## 28 QUARTER-WAY SCHRODER S285#

HBR

Ident: **TLH21S285**

Born: **05/10/2021**

**AMFU,CAFU,DDFU,NHFU**

MILWILLAH KRAKATOA K92<sup>PV</sup>  
**CMDP105 MERRIDALE PORT P105<sup>PV</sup>**  
 MERRIDALE DREAM M103PV

MERCHISTON STOKER 350#  
**TLHN22 QUARTER-WAY NARELLE N22#**  
 QUARTER-WAY FAYETTE F76#

*Another classic Merridale Port son with a lot of meat. Strong bull with excellent structural conformation. Good figured.*

Mating Type: **Natural** Pen: **4** Purchaser:..... \$.....

Mid August 2023 TransTasman Angus Cattle Evaluation											
TACE <small>TransTasman Angus Cattle Evaluation</small>	Birth Wt.	Milk	200 Wt.	400 Wt.	600 Wt.	Scrotal Size	Carcase Wt.	EMA	Rump Fat	IMF%	
	EBV	+4.5	+13	+49	+91	+118	+3.7	+62	+6.6	-1.5	+0.3
	Acc	71%	48%	64%	64%	70%	68%	56%	49%	53%	51%

Traits Observed: BWT,600WT,SC,Scan(EMA,Rib,Rump,IMF) Number of Herds: 0, Prog Analysed: 0, Genomic Prog: 0

## 29 QUARTER-WAY SERGEANT S307#

HBR

Ident: **TLH21S307**

Born: **11/11/2021**

**AMFU,CAFU,DDFU,NHFU**

R B TOUR OF DUTY 177<sup>PV</sup>  
**NBNM97 BEN NEVIS MYSTIC M97<sup>SV</sup>**  
 BEN NEVIS GERANIUM H6#

TE MANIA AFRICA A217PV  
**VCCG195 COOLANA ANNABELL G195#**  
 COOLANA X13SV

*A later maturing Ben Nevis Mystic son from Coolana Annabell. Great spread of figures backs up is structure and strength.*

Mating Type: **Natural** Pen: **5** Purchaser:..... \$.....

Mid August 2023 TransTasman Angus Cattle Evaluation											
TACE <small>TransTasman Angus Cattle Evaluation</small>	Birth Wt.	Milk	200 Wt.	400 Wt.	600 Wt.	Scrotal Size	Carcase Wt.	EMA	Rump Fat	IMF%	
	EBV	+4.4	+19	+45	+86	+115	+2.8	+59	+6.3	-0.5	+2.1
	Acc	69%	50%	61%	62%	64%	72%	54%	52%	54%	53%

Traits Observed: BWT,600WT,SC,Scan(EMA,Rib,Rump,IMF) Number of Herds: 0, Prog Analysed: 0, Genomic Prog: 0

## 30 QUARTER-WAY STEIN S145#

HBR

Ident: **TLH21S145**

Born: **29/07/2021**

**AMFU,CAFU,DDFU,NHFU**

MERCHISTON STEAKHOUSE 489#  
**TLHP29 QUARTER-WAY PASCAL P29<sup>SV</sup>**  
 QUARTER-WAY BONNIE B74#

BANQUET ABERDEEN A349SV  
**TLHF54 QUARTER-WAY FRAN F54#**  
 QUARTER-WAY X43#

*Sire Pascal shows all the growth and strength of his sire Steakhouse, and Stein is also served by a strong maternal family. A young bull with a lot of capacity, structure and strength.*

Mating Type: **Natural** Pen: **5** Purchaser:..... \$.....

Mid August 2023 TransTasman Angus Cattle Evaluation											
TACE <small>TransTasman Angus Cattle Evaluation</small>	Birth Wt.	Milk	200 Wt.	400 Wt.	600 Wt.	Scrotal Size	Carcase Wt.	EMA	Rump Fat	IMF%	
	EBV	+4.7	+13	+35	+62	+73	+1.2	+39	+3.1	+1.0	-0.6
	Acc	74%	47%	67%	67%	73%	57%	58%	50%	54%	50%

Traits Observed: BWT,600WT,Scan(EMA,Rib,Rump,IMF) Number of Herds: 0, Prog Analysed: 0, Genomic Prog: 0



## 31 QUARTER-WAY SALVATION S265#

HBR

Ident: TLH21S265

Born: 20/09/2021

AMFU,CAFU,DD25%,NHFU

MUSGRAVE BIG SKY<sup>PV</sup>  
**NWPM42 WATTLETOP MOONSHINE M42<sup>SV</sup>**  
 WATTLETOP DANDLOO K48#

ALPINE DARCY D62SV  
**TLHG35 QUARTER-WAY GILBERTA G35#**  
 QUARTER-WAY EMMA D55#

*Moonshine son out of now 12 year old Gilberta. Impressive young bull with great structure and strength. Will add a lot of meat to his calves.*

Mating Type: **Natural** Pen: **5** Purchaser:..... \$.....

Mid August 2023 TransTasman Angus Cattle Evaluation											
	Birth Wt.	Milk	200 Wt.	400 Wt.	600 Wt.	Scrotal Size	Carcase Wt.	EMA	Rump Fat	IMF%	
	EBV	+2.3	+23	+38	+69	+83	+2.1	+45	+0.4	+0.5	+2.3
	Acc	74%	54%	68%	69%	74%	74%	60%	54%	57%	53%

Traits Observed: BWT,600WT,SC,Scan(EMA,Rib,Rump,IMF) Number of Herds: 0, Prog Analysed: 0, Genomic Prog: 0

## 32 QUARTER-WAY SIMBA S202#

HBR

Ident: TLH21S202

Born: 23/08/2021

AMFU,CAFU,DD25%,NHFU

MATAURI REALITY 839#  
**DXTP224 TEXAS REALITY P224<sup>PV</sup>**  
 TEXAS OMNIA M363SV

QUARTER-WAY KELVIN K23SV  
**TLHM151 QUARTER-WAY MAKAYLA M151#**  
 QUARTER-WAY KIZZY K135#

*Later maturing Simba is a Texas Reality son with oodles of promise. This young bull is strong, structurally correct and a great temperament. He will compliment any herd.*

Mating Type: **AI** Pen: **5** Purchaser:..... \$.....

Mid August 2023 TransTasman Angus Cattle Evaluation											
	Birth Wt.	Milk	200 Wt.	400 Wt.	600 Wt.	Scrotal Size	Carcase Wt.	EMA	Rump Fat	IMF%	
	EBV	+4.6	+9	+45	+79	+107	+2.5	+56	+3.1	-0.7	+0.7
	Acc	74%	45%	66%	67%	73%	54%	57%	53%	57%	52%

Traits Observed: GL,BWT,600WT,Scan(EMA,Rib,Rump,IMF) Number of Herds: 0, Prog Analysed: 0, Genomic Prog: 0

## 33 QUARTER-WAY SIMON S118#

HBR

Ident: TLH21S118

Born: 06/07/2021

AMFU,CAFU,DDFU,NHFU

KAHARAU CLASSIC 10-378#  
**NZE17683017444 KAHARAU CLASS MAN 17-444#**  
 GOLDWHN JESS H601#

QUARTER-WAY WARATAH Z18SV  
**TLHE99 QUARTER-WAY ENGRACIA E99#**  
 QUARTER-WAY CHARLENE Z56#

*Lets talk pedigree. Kaharau Class Man son out of fantastic older cow Engracia, who is a Waratah Z18 daughter. Fantastic DWs for the very fleshy Simon. Impressive.*

Mating Type: **AI** Pen: **5** Purchaser:..... \$.....

Mid August 2023 TransTasman Angus Cattle Evaluation											
	Birth Wt.	Milk	200 Wt.	400 Wt.	600 Wt.	Scrotal Size	Carcase Wt.	EMA	Rump Fat	IMF%	
	EBV	+5.5	+12	+43	+81	+112	+1.7	+54	+0.3	-2.8	+0.6
	Acc	75%	49%	68%	68%	72%	59%	58%	51%	55%	51%

Traits Observed: GL,BWT,600WT,Scan(EMA,Rib,Rump,IMF) Number of Herds: 0, Prog Analysed: 0, Genomic Prog: 0

## 34 QUARTER-WAY SCHANCK S187#

HBR

Ident: **TLH21S187**

Born: **18/08/2021**

**AMFU,CAFU,DDFU,NHFU**

TURIROA COMPLETE 16M013#  
**NZE15603018P224 TURIROA RAGNAR 18P224#**  
 TURIROA L090#

BANQUET JUPITER J263SV  
**TLHM128 QUARTER-WAY MOIRA M128#**  
 QUARTER-WAY GUINEVERE G78#

*Schanck is sired by NZ's Turiroa Ragnar. This young bull is growing out into strong meaty bull with a load of capacity. Neat EBVs.*

Mating Type: **AI** Pen: **5** Purchaser:..... \$.....

Mid August 2023 TransTasman Angus Cattle Evaluation											
 TACE TransTasman Angus Cattle Evaluation	Birth Wt.	Milk	200 Wt.	400 Wt.	600 Wt.	Scrotal Size	Carcase Wt.	EMA	Rump Fat	IMF%	
	EBV	<b>+4.9</b>	<b>+9</b>	<b>+44</b>	<b>+76</b>	<b>+107</b>	<b>+2.2</b>	<b>+51</b>	<b>+4.7</b>	<b>-0.8</b>	<b>+0.6</b>
	Acc	75%	47%	69%	69%	74%	74%	59%	52%	56%	52%

Traits Observed: GL,BWT,600WT,SC,Scan(EMA,Rib,Rump,IMF) Number of Herds: 0, Prog Analysed: 0, Genomic Prog: 0

## 35 QUARTER-WAY SENATE S301#

HBR

Ident: **TLH21S301**

Born: **18/10/2021**

**AMFU,CAFU,DDFU,NHFU**

BEN NEVIS METAMORPHIC M51<sup>SV</sup>  
**VONP306 BANQUET PAXMAN P306<sup>SV</sup>**  
 BANQUET TABERNACLE J245#

MERCHISTON STEAKHOUSE 489#  
**TLHN159 QUARTER-WAY NIFTY N159#**  
 QUARTER-WAY VERITY A19#

*Senate is an outstanding younger bull with strong pedigrees behind him. Calving ease, growth and structure. Lovely temperament.*

Mating Type: **Natural** Pen: **5** Purchaser:..... \$.....

Mid August 2023 TransTasman Angus Cattle Evaluation											
 TACE TransTasman Angus Cattle Evaluation	Birth Wt.	Milk	200 Wt.	400 Wt.	600 Wt.	Scrotal Size	Carcase Wt.	EMA	Rump Fat	IMF%	
	EBV	<b>+5.4</b>	<b>+16</b>	<b>+49</b>	<b>+86</b>	<b>+114</b>	<b>+1.9</b>	<b>+62</b>	<b>+2.0</b>	<b>-2.5</b>	<b>+0.2</b>
	Acc	73%	49%	66%	66%	73%	71%	58%	51%	55%	52%

Traits Observed: BWT,600WT,SC,Scan(EMA,Rib,Rump,IMF) Number of Herds: 0, Prog Analysed: 0, Genomic Prog: 0

## 36 QUARTER-WAY SECOMBE S297#

HBR

Ident: **TLH21S297**

Born: **11/10/2021**

**AMFU,CAFU,DDFU,NHFU**

BANQUET LIBERTY L352<sup>PV</sup>  
**VONP110 BANQUET PEGG P110<sup>SV</sup>**  
 BANQUET LASS L041#

BANQUET ABERDEEN A349SV  
**TLHE80 QUARTER-WAY ELSIE E80#**  
 QUARTER-WAY VERA A37#

*Smooth shouldered Banquet Pegg bull from and old cow family. Striking young bull with great structure and coverage.*

Mating Type: **Natural** Pen: **6** Purchaser:..... \$.....

Mid August 2023 TransTasman Angus Cattle Evaluation											
 TACE TransTasman Angus Cattle Evaluation	Birth Wt.	Milk	200 Wt.	400 Wt.	600 Wt.	Scrotal Size	Carcase Wt.	EMA	Rump Fat	IMF%	
	EBV	<b>+6.6</b>	<b>+14</b>	<b>+38</b>	<b>+68</b>	<b>+93</b>	<b>+1.5</b>	<b>+51</b>	<b>+1.7</b>	<b>-3.6</b>	<b>+0.7</b>
	Acc	72%	47%	66%	66%	72%	72%	57%	49%	53%	49%

Traits Observed: BWT,600WT,SC,Scan(EMA,Rib,Rump,IMF) Number of Herds: 0, Prog Analysed: 0, Genomic Prog: 0

## 37 QUARTER-WAY SHAKESPEARE S274#

HBR

Ident: TLH21S274

Born: 30/09/2021

AMFU,CAFU,DDFU,NH3%

TEXAS MOUNT K002<sup>PV</sup>

TLHP184 QUARTER-WAY PERFECTION P184<sup>SV</sup>

QUARTER-WAY JACINDA J12#

QUARTER-WAY LORNE L104SV

TLHP103 QUARTER-WAY PIPPA P103#

QUARTER-WAY MARIBELLE M56#

*Quarterway Perfection son with low birth weight. Crossed with NZ dam pedigree and you have an easy doing bull great weight patterns.*

Mating Type: **Natural**

Pen: **6**

Purchaser:.....

\$.....

### Mid August 2023 TransTasman Angus Cattle Evaluation

TACE TransTasman Angus Cattle Evaluation	EBV	Birth Wt.	Milk	200 Wt.	400 Wt.	600 Wt.	Scrotal Size	Carcase Wt.	EMA	Rump Fat	IMF%	
		Acc	+4.6	+13	+43	+83	+111	+3.4	+55	+2.6	-0.7	-0.1
			71%	44%	64%	65%	71%	70%	55%	47%	52%	48%

Traits Observed: BWT,600WT,SC,Scan(EMA,Rib,Rump,IMF) Number of Herds: 0, Prog Analysed: 0, Genomic Prog: 0

## 38 QUARTER-WAY STEFANO S144#

HBR

Ident: TLH21S144

Born: 29/07/2021

AMFU,CAFU,DDFU,NHFU

TURIROA COMPLETE 16M013#

NZE15603018P224 TURIROA RAGNAR 18P224#

TURIROA L090#

BOONAROO JOIN J196SV

TLHN185 QUARTER-WAY NARLA N185#

QUARTER-WAY GWENNY G83#

*Well framed Turiroa Ragnar son, Stefano is a picture to observe. Very neat, well structured and meaty. Powerful pedigree.*

Mating Type: **AI**

Pen: **6**

Purchaser:.....

\$.....

### Mid August 2023 TransTasman Angus Cattle Evaluation

TACE TransTasman Angus Cattle Evaluation	EBV	Birth Wt.	Milk	200 Wt.	400 Wt.	600 Wt.	Scrotal Size	Carcase Wt.	EMA	Rump Fat	IMF%	
		Acc	+3.6	+16	+41	+77	+103	+1.9	+54	+2.9	-0.3	+1.3
			74%	44%	68%	69%	74%	73%	58%	51%	54%	50%

Traits Observed: GL,BWT,600WT(x2),SC,Scan(EMA,Rib,Rump,IMF) Number of Herds: 0, Prog Analysed: 0, Genomic Prog: 0

## 39 QUARTER-WAY SCOTCH S292#

HBR

Ident: TLH21S292

Born: 07/10/2021

AMFU,CAFU,DDFU,NHFU

MUSGRAVE BIG SKY<sup>PV</sup>

NWPM42 WATTLETOP MOONSHINE M42<sup>SV</sup>

WATTLETOP DANDLOO K48#

BANQUET ABERDEEN A349SV

TLHG81 QUARTER-WAY GWEN G81#

QUARTER-WAY VES Z19#

*Scotch is a beautiful Moonshine son. Low birthweight bull with the scope to add meat to your herd. Lovely temperament.*

Mating Type: **Natural**

Pen: **6**

Purchaser:.....

\$.....

### Mid August 2023 TransTasman Angus Cattle Evaluation

TACE TransTasman Angus Cattle Evaluation	EBV	Birth Wt.	Milk	200 Wt.	400 Wt.	600 Wt.	Scrotal Size	Carcase Wt.	EMA	Rump Fat	IMF%	
		Acc	+4.1	+21	+42	+80	+102	+1.4	+58	+2.3	-1.1	+2.0
			75%	55%	69%	70%	75%	74%	61%	55%	58%	55%

Traits Observed: BWT,600WT,SC,Scan(EMA,Rib,Rump,IMF) Number of Herds: 0, Prog Analysed: 0, Genomic Prog: 0



## 40 QUARTER-WAY SWANKY S184#

HBR

Ident: **TLH21S184**

Born: **18/08/2021**

**AMFU,CAFU,DDFU,NHFU**

BEN NEVIS METAMORPHIC M51<sup>SV</sup>  
**VONP306 BANQUET PAXMAN P306<sup>SV</sup>**

BANQUET TABERNACLE J245#

BANQUET JESTER J687PV  
**TLHN177 QUARTER-WAY NEVERLAND N177#**  
 QUARTER-WAY EDWARDINE E17#

*Swanky by name swanky by nature. This Banquet Paxman son is a gem. Great raw data and EBV's he will grow out into a powerful bull giving your herd strength and meat.*

Mating Type: **Natural** Pen: **6** Purchaser:..... \$.....

Mid August 2023 TransTasman Angus Cattle Evaluation												
TACE <small>TransTasman Angus Cattle Evaluation</small>	EBV	Birth Wt.	Milk	200 Wt.	400 Wt.	600 Wt.	Scrotal Size	Carcase Wt.	EMA	Rump Fat	IMF%	
		Acc	+7.0	+17	+56	+103	+140	+1.8	+77	+4.3	-3.7	+0.8
			73%	45%	65%	65%	72%	71%	56%	48%	52%	49%

Traits Observed: BWT,600WT,SC,Scan(EMA,Rib,Rump,IMF) Number of Herds: 0, Prog Analysed: 0, Genomic Prog: 0

## 41 QUARTER-WAY SUPERSTITIOUS S258#

HBR

Ident: **TLH21S258**

Born: **17/09/2021**

**AMFU,CAFU,DDFU,NHFU**

MILWILLAH KRAKATOA K92<sup>PV</sup>  
**CMDP105 MERRIDALE PORT P105<sup>PV</sup>**

MERRIDALE DREAM M103PV

CLUNIE RANGE LOGAN L1SV  
**TLHN127 QUARTER-WAY NOVEL N127#**  
 QUARTER-WAY KILKIE K153#

*This young Merridale Port will be a meat maker. Superstitious is a thick, wide topped, larger bull with smooth shoulders for calving ease.*

Mating Type: **Natural** Pen: **6** Purchaser:..... \$.....

Mid August 2023 TransTasman Angus Cattle Evaluation												
TACE <small>TransTasman Angus Cattle Evaluation</small>	EBV	Birth Wt.	Milk	200 Wt.	400 Wt.	600 Wt.	Scrotal Size	Carcase Wt.	EMA	Rump Fat	IMF%	
		Acc	+5.4	+9	+50	+88	+116	+1.4	+65	+6.9	-3.0	+0.1
			72%	47%	65%	66%	73%	71%	57%	50%	53%	51%

Traits Observed: BWT,600WT,SC,Scan(EMA,Rib,Rump,IMF) Number of Herds: 0, Prog Analysed: 0, Genomic Prog: 0

## 42 QUARTER-WAY SENSATION S304#

HBR

Ident: **TLH21S304**

Born: **28/10/2021**

**AMFU,CAFU,DDFU,NH2%**

BANQUET LIBERTY L352<sup>PV</sup>  
**VONP110 BANQUET PEGG P110<sup>SV</sup>**

BANQUET LASS L041#

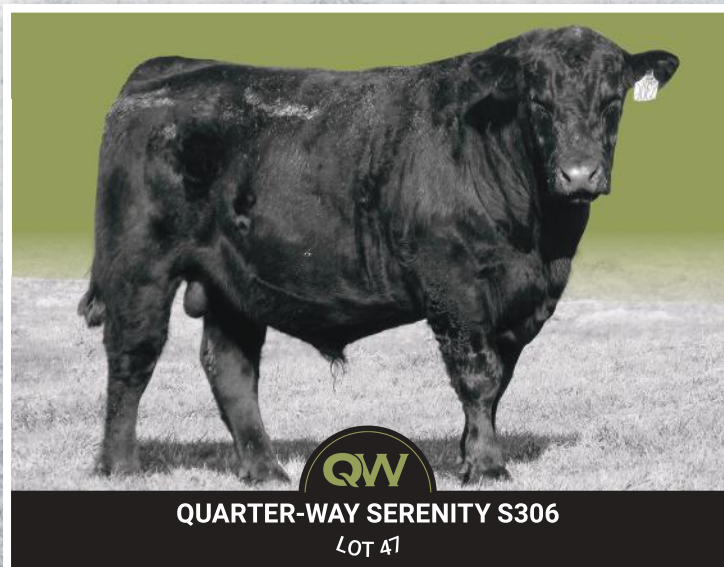
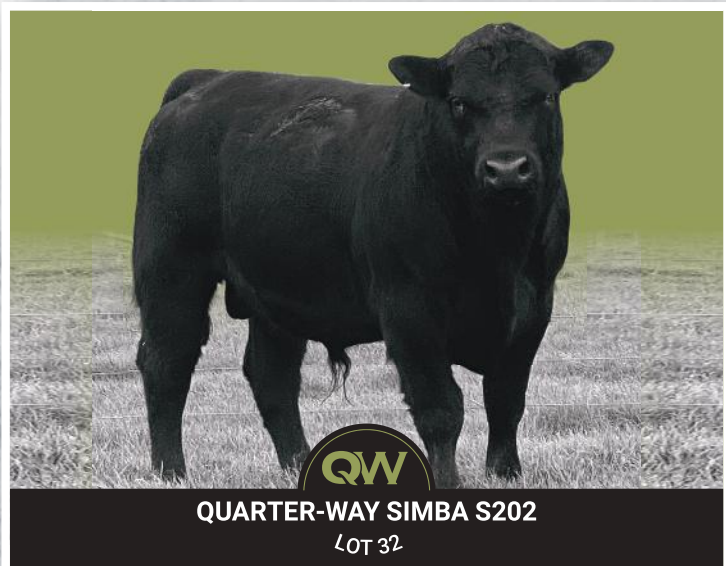
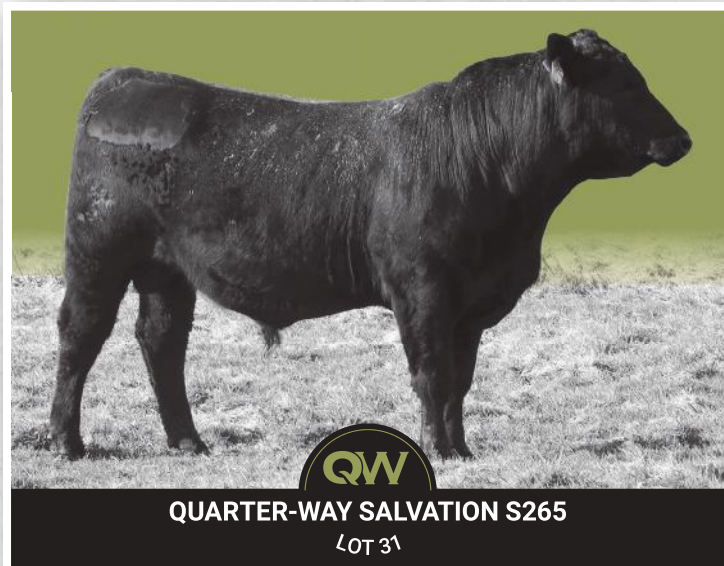
QUARTER-WAY KELVIN K23SV  
**TLHM146 QUARTER-WAY MADDIE M146#**  
 QUARTER-WAY KITTY K94#

*Larger framed Banquet Pegg son, with a lot of capacity. Sensation comes from a proven dam line and will be not be 2 years until October. Big long growthy bull.*

Mating Type: **Natural** Pen: **6** Purchaser:..... \$.....

Mid August 2023 TransTasman Angus Cattle Evaluation												
TACE <small>TransTasman Angus Cattle Evaluation</small>	EBV	Birth Wt.	Milk	200 Wt.	400 Wt.	600 Wt.	Scrotal Size	Carcase Wt.	EMA	Rump Fat	IMF%	
		Acc	+6.8	+14	+46	+82	+114	+2.9	+61	+1.5	-3.8	+0.8
			72%	43%	64%	64%	71%	69%	54%	47%	52%	48%

Traits Observed: BWT,600WT,SC,Scan(EMA,Rib,Rump,IMF) Number of Herds: 0, Prog Analysed: 0, Genomic Prog: 0



## 43 QUARTER-WAY STAN S134#

HBR

Ident: **TLH21S134**

Born: **23/07/2021**

**AMFU,CAFU,DDFU,NHFU**

MUSGRAVE BIG SKY<sup>PV</sup>  
**NWPM42 WATTLETOP MOONSHINE M42<sup>SV</sup>**  
 WATTLETOP DANDLOO K48#

QUARTER-WAY JULIUS J118SV  
**TLHM58 QUARTER-WAY MARIETTA M58#**  
 QUARTER-WAY KALI K4#

*Stan is an ideal heifer bull. A smaller framed Moonshine son with structure and capacity.*

Mating Type: **Natural** Pen: **7** Purchaser:..... \$.....

Mid August 2023 TransTasman Angus Cattle Evaluation											
	Birth Wt.	Milk	200 Wt.	400 Wt.	600 Wt.	Scrotal Size	Carcase Wt.	EMA	Rump Fat	IMF%	
	EBV	+3.1	+23	+37	+72	+87	+1.2	+47	-3.2	+0.1	+2.1
	Acc	75%	53%	68%	68%	74%	58%	59%	54%	57%	53%

Traits Observed: BWT,600WT,Scan(EMA,Rib,Rump,IMF) Number of Herds: 0, Prog Analysed: 0, Genomic Prog: 0

## 44 QUARTER-WAY SETH S73#

HBR

Ident: **TLH21S73**

Born: **20/06/2021**

**AMFU,CAFU,DDFU,NHFU**

MERCHISTON STEAKHOUSE 489#  
**NZE13516017N13 KAYJAY PORTERHOUSE N13#**  
 KAYJAY ANN H571#

QUARTER-WAY C56SV  
**TLHJ111 QUARTER-WAY JOCELYN J111#**  
 QUARTER-WAY U21#

*Smaller framed Kayjay Porterhouse son, Seth has a lot to offer. Longevity, structure and consistency. Will add thickness.*

Mating Type: **AI** Pen: **7** Purchaser:..... \$.....

Mid August 2023 TransTasman Angus Cattle Evaluation											
	Birth Wt.	Milk	200 Wt.	400 Wt.	600 Wt.	Scrotal Size	Carcase Wt.	EMA	Rump Fat	IMF%	
	EBV	+5.5	+10	+38	+67	+83	+1.6	+49	+1.4	-1.3	-0.7
	Acc	70%	51%	63%	63%	63%	58%	54%	50%	52%	52%

Traits Observed: BWT,600WT,Scan(EMA,Rib,Rump,IMF) Number of Herds: 0, Prog Analysed: 0, Genomic Prog: 0

## 45 QUARTER-WAY STARSKY S235#

HBR

Ident: **TLH21S235**

Born: **31/08/2021**

**AMFU,CAFU,DDFU,NHFU**

R B TOUR OF DUTY 177<sup>PV</sup>  
**NBNM97 BEN NEVIS MYSTIC M97<sup>SV</sup>**  
 BEN NEVIS GERANIUM H6#  
 BANQUET ABERDEEN A349SV  
**TLHG60 QUARTER-WAY GODIVA G60#**  
 QUARTER-WAY CHARL Y42#

*Starsky is a Ben Nevis Mystic son, out of another old cow line. Great line of figures to back up this strong young meat man.*

Mating Type: **Natural** Pen: **7** Purchaser:..... \$.....

Mid August 2023 TransTasman Angus Cattle Evaluation											
	Birth Wt.	Milk	200 Wt.	400 Wt.	600 Wt.	Scrotal Size	Carcase Wt.	EMA	Rump Fat	IMF%	
	EBV	+5.9	+17	+37	+72	+92	+0.3	+55	+4.3	-0.9	-0.1
	Acc	75%	45%	67%	69%	74%	74%	59%	52%	55%	51%

Traits Observed: BWT,600WT,SC,Scan(EMA,Rib,Rump,IMF) Number of Herds: 0, Prog Analysed: 0, Genomic Prog: 0



## 46 QUARTER-WAY SCOUT S294#

HBR

Ident: TLH21S294

Born: 07/10/2021

AMFU,CAFU,DDFU,NH3%

TEXAS MOUNT K002<sup>PV</sup>

TLHP184 QUARTER-WAY PERFECTION P184<sup>SV</sup>

QUARTER-WAY JACINDA J12#

*Quarterway Perfection is breeding structurally correct bull with great weight for age, and Scout follows suit. Meat will be his forte, with Moonshine and Hudson featuring in the dam pedigree.*

WATTLETOP MOONSHINE M42SV

TLHP113 QUARTER-WAY POLLYANNA P113#

QUARTER-WAY LORRAINE L100#

Mating Type: Natural

Pen: 7

Purchaser:.....

\$.....

Mid August 2023 TransTasman Angus Cattle Evaluation												
TACE TransTasman Angus Cattle Evaluation	EBV	Birth Wt.	Milk	200 Wt.	400 Wt.	600 Wt.	Scrotal Size	Carcase Wt.	EMA	Rump Fat	IMF%	
		Acc	+4.7	+16	+44	+85	+111	+2.3	+59	-0.3	+0.6	+1.0
			70%	47%	64%	65%	71%	71%	56%	49%	53%	50%

Traits Observed: BWT,600WT,SC,Scan(EMA,Rib,Rump,IMF) Number of Herds: 0, Prog Analysed: 0, Genomic Prog: 0

## 47 QUARTER-WAY SERENITY S306#

HBR

Ident: TLH21S306

Born: 08/11/2021

AMFU,CAFU,DDFU,NHFU

R B TOUR OF DUTY 177<sup>PV</sup>

NBNM97 BEN NEVIS MYSTIC M97<sup>SV</sup>

BEN NEVIS GERANIUM H6#

*Another Ben Nevis Mystic son from a great old, old cow line. Longevity, structure and meat.*

BANQUET XCEPTIONAL X187#

TLHD17 QUARTER-WAY TION D17#

QUARTER-WAY X43#

Mating Type: Natural

Pen: 7

Purchaser:.....

\$.....

Mid August 2023 TransTasman Angus Cattle Evaluation												
TACE TransTasman Angus Cattle Evaluation	EBV	Birth Wt.	Milk	200 Wt.	400 Wt.	600 Wt.	Scrotal Size	Carcase Wt.	EMA	Rump Fat	IMF%	
		Acc	+4.9	+14	+35	+64	+82	+0.4	+47	+2.0	-1.3	+0.2
			72%	44%	67%	69%	74%	73%	60%	52%	56%	52%

Traits Observed: BWT,600WT,SC,Scan(EMA,Rib,Rump,IMF) Number of Herds: 0, Prog Analysed: 0, Genomic Prog: 0

## 48 QUARTER-WAY SORRENTO S230#

HBR

Ident: TLH21S230

Born: 30/08/2021

AMFU,CAFU,DDFU,NHFU

MATAURI REALITY 839#

DXTP224 TEXAS REALITY P224<sup>PV</sup>

TEXAS OMNIA M363SV

*Younger Texas Reality son with low birthweight and a good weight pattern to add power to your herd. Good heifer bull.*

IRELANDS HIDDEN H446PV

TLHN65 QUARTER-WAY NOLA N65#

QUARTER-WAY GLENDORA G114#

Mating Type: AI

Pen: 7

Purchaser:.....

\$.....

Mid August 2023 TransTasman Angus Cattle Evaluation												
TACE TransTasman Angus Cattle Evaluation	EBV	Birth Wt.	Milk	200 Wt.	400 Wt.	600 Wt.	Scrotal Size	Carcase Wt.	EMA	Rump Fat	IMF%	
		Acc	+3.7	+11	+50	+90	+113	+2.6	+64	+3.9	-0.6	+1.1
			74%	47%	67%	68%	74%	72%	58%	51%	55%	52%

Traits Observed: GL,BWT,600WT,SC,Scan(EMA,Rib,Rump,IMF) Number of Herds: 0, Prog Analysed: 0, Genomic Prog: 0

## 49 QUARTER-WAY SEPIA S308#

HBR

Ident: **TLH21S308**

Born: **08/10/2021**

**AMFU,CAFU,DDFU,NHFU**

MILWILLAH KRAKATOA K92<sup>PV</sup>  
**CMDP105 MERRIDALE PORT P105<sup>PV</sup>**  
 MERRIDALE DREAM M103PV

BANQUET JESTER J687PV  
**TLHM170 QUARTER-WAY MATILDE M170#**  
 QUARTER-WAY EIR E33#

*Last and youngest of the 2 year olds. Sepia is an impressive younger bull, with great structure and capacity.*

Mating Type: **Natural** Pen: **7** Purchaser:..... \$.....

Mid August 2023 TransTasman Angus Cattle Evaluation											
TACE TransTasman Angus Cattle Evaluation	EBV	Birth Wt.	Milk	200 Wt.	400 Wt.	600 Wt.	Scrotal Size	Carcase Wt.	EMA	Rump Fat	IMF%
		Acc	70%	45%	58%	56%	58%	53%	49%	46%	48%

Traits Observed: BWT,600WT,Scan(EMA,Rib,Rump,IMF) Number of Herds: 0, Prog Analysed: 0, Genomic Prog: 0

## 50 QUARTER-WAY TECHNICIAN T11#

HBR

Ident: **TLH22T11**

Born: **30/04/2022**

**AMFU,CAFU,DDFU,NHFU**

G A R PROPHET<sup>SV</sup>  
**SMPQ400 PATHFINDER PROPHET Q400<sup>SV</sup>**  
 PATHFINDER BOWMAN G509#

BEN NEVIS MYSTIC M97SV  
**TLHQ309 QUARTER-WAY INTENTION Q309#**  
 QUARTER-WAY BANNA C45#

*Technician is one very impressive yearling. Sired by powerhouse Pathfinder Prophet and strength in the dam pedigree, this young bull is already showing strength and growth.*

Mating Type: **Natural** Pen: **8** Purchaser:..... \$.....

Mid August 2023 TransTasman Angus Cattle Evaluation											
TACE TransTasman Angus Cattle Evaluation	EBV	Birth Wt.	Milk	200 Wt.	400 Wt.	600 Wt.	Scrotal Size	Carcase Wt.	EMA	Rump Fat	IMF%
		Acc	72%	47%	63%	66%	62%	51%	53%	47%	49%

Traits Observed: BWT,400WT Number of Herds: 0, Prog Analysed: 0, Genomic Prog: 0

## 51 QUARTER-WAY THOMMO T36#

HBR

Ident: **TLH22T36**

Born: **26/05/2022**

**AMFU,CAFU,DD7%,NHFU**

BALDRIDGE BEAST MODE B074<sup>PV</sup>  
**ELYQ78 TRIO QANTAS Q78<sup>SV</sup>**  
 TRIO BURNETTE L78#

MERCHISTON GENERATE 243#  
**TLHL136 QUARTER-WAY LACHINA L136#**  
 QUARTER-WAY GAIL G12#

*Thommo has a impressive weight pattern emerging. He is a strong young Trio Qantas son and shows thickness and depth.*

Mating Type: **AI** Pen: **8** Purchaser:..... \$.....

Mid August 2023 TransTasman Angus Cattle Evaluation											
TACE TransTasman Angus Cattle Evaluation	EBV	Birth Wt.	Milk	200 Wt.	400 Wt.	600 Wt.	Scrotal Size	Carcase Wt.	EMA	Rump Fat	IMF%
		Acc	73%	50%	64%	62%	62%	58%	53%	51%	53%

Traits Observed: GL,BWT Number of Herds: 0, Prog Analysed: 0, Genomic Prog: 0

## 52 QUARTER-WAY TECHNOLOGY T90#

HBR

Ident: **TLH22T90**

Born: **16/06/2022**

**AMFU,CAFU,DDFU,NHFU**

G A R PROPHET<sup>SV</sup>

**SMPQ400 PATHFINDER PROPHET Q400<sup>SV</sup>**

PATHFINDER BOWMAN G509#

MERCHISTON GENERATE 243#

**TLHL159 QUARTER-WAY LEOPOLDA L159#**

QUARTER-WAY HAITI H85#

*Technology has pedigree, figures, structure and growth. Very impressive young sire.*

Mating Type: **Natural**

Pen: **8**

Purchaser:.....

\$.....

Mid August 2023 TransTasman Angus Cattle Evaluation											
 TACE TransTasman Angus Cattle Evaluation	Birth Wt.	Milk	200 Wt.	400 Wt.	600 Wt.	Scrotal Size	Carcase Wt.	EMA	Rump Fat	IMF%	
	EBV	+6.3	+16	+58	+98	+120	+2.5	+62	+3.0	-1.4	+2.0
	Acc	73%	50%	65%	68%	64%	53%	55%	49%	52%	53%

Traits Observed: BWT,400WT Number of Herds: 0, Prog Analysed: 0, Genomic Prog: 0

## 53 QUARTER-WAY TETRIS T94#

HBR

Ident: **TLH22T94**

Born: **25/06/2022**

**AMFU,CAFU,DDFU,NHFU**

G A R PROPHET<sup>SV</sup>

**SMPQ400 PATHFINDER PROPHET Q400<sup>SV</sup>**

PATHFINDER BOWMAN G509#

QUARTER-WAY KELVIN K23SV

**TLHM98 QUARTER-WAY MELODY M98#**

QUARTER-WAY KIRSTIE K93#

*Another prophet son. Tetris has structure and growth. Beautiful temperament.*

Mating Type: **Natural**

Pen: **8**

Purchaser:.....

\$.....

Mid August 2023 TransTasman Angus Cattle Evaluation											
 TACE TransTasman Angus Cattle Evaluation	Birth Wt.	Milk	200 Wt.	400 Wt.	600 Wt.	Scrotal Size	Carcase Wt.	EMA	Rump Fat	IMF%	
	EBV	+4.9	+16	+51	+88	+110	+1.3	+57	+0.9	-0.7	+2.5
	Acc	73%	45%	64%	67%	63%	52%	54%	46%	49%	50%

Traits Observed: BWT,400WT Number of Herds: 0, Prog Analysed: 0, Genomic Prog: 0

## 54 QUARTER-WAY TRACKER T212#

HBR

Ident: **TLH22T212**

Born: **18/07/2022**

**AMFU,CAFU,DDFU,NHFU**

MILLAH MURRAH LOCH UP L133<sup>PV</sup>

**SFNN244 NAMPARA N244<sup>SV</sup>**

NAMPARA H07SV

BANQUET ABERDEEN A349SV

**TLHG71 QUARTER-WAY GRIZELLA G71#**

QUARTER-WAY VESPER V31#

*Tracker is a Nampara N244 son from a fabulous cow family. This young bull will grow out into an impressive meat maker.*

Mating Type: **Natural**

Pen: **8**

Purchaser:.....

\$.....

Mid August 2023 TransTasman Angus Cattle Evaluation											
 TACE TransTasman Angus Cattle Evaluation	Birth Wt.	Milk	200 Wt.	400 Wt.	600 Wt.	Scrotal Size	Carcase Wt.	EMA	Rump Fat	IMF%	
	EBV	+5.1	+18	+39	+70	+85	+1.1	+49	+3.7	-1.3	+0.9
	Acc	74%	46%	66%	69%	67%	55%	57%	48%	50%	49%

Traits Observed: BWT,400WT Number of Herds: 0, Prog Analysed: 0, Genomic Prog: 0



## 55 QUARTER-WAY TRIPLEX T221#

HBR

Ident: **TLH22T221**

Born: **20/07/2022**

**AMFU,CAFU,DD12%,NHFU**

TURIROA COMPLETE 16M013#  
**NZE15603018P224 TURIROA RAGNAR 18P224#**  
 TURIROA L090#

*Turiroa Ragnar progeny never disappoint. Another strong young bull with plenty of figures to show.*

WATTLETOP MOONSHINE M42SV  
**TLHQ90 QUARTER-WAY QUICKIE Q90#**  
 QUARTER-WAY HIGHLAND H115#

Mating Type: **AI** Pen: **8** Purchaser:..... \$.....

Mid August 2023 TransTasman Angus Cattle Evaluation											
TACE TransTasman Angus Cattle Evaluation	EBV	Birth Wt.	Milk	200 Wt.	400 Wt.	600 Wt.	Scrotal Size	Carcase Wt.	EMA	Rump Fat	IMF%
		Acc	+2.6	+19	+41	+73	+102	+2.1	+52	+3.6	+0.0
	73%	47%	67%	69%	66%	58%	56%	51%	52%	53%	

Traits Observed: GL,BWT,400WT Number of Herds: 0, Prog Analysed: 0, Genomic Prog: 0

## 56 QUARTER-WAY TAUPO T353#

HBR

Ident: **TLH22T353**

Born: **26/08/2022**

**AMFU,CAFU,DDFU,NHFU**

MERCHISTON STEAKHOUSE 489#  
**TLHP16 QUARTER-WAY PALMER P16<sup>SV</sup>**  
 QUARTER-WAY EGBERTA E41#

*Quarterway Palmer son, out of Dunoon Lubra. Maturing well into a strong young sire. Great structure and capacity.*

TOPBOS LEADING EDGE L292PV  
**BHRQ701 DUNOON LUBRA Q701<sup>SV</sup>**  
 DUNOON LUBRA G614#

Mating Type: **Natural** Pen: **8** Purchaser:..... \$.....

Mid August 2023 TransTasman Angus Cattle Evaluation											
TACE TransTasman Angus Cattle Evaluation	EBV	Birth Wt.	Milk	200 Wt.	400 Wt.	600 Wt.	Scrotal Size	Carcase Wt.	EMA	Rump Fat	IMF%
		Acc	+4.8	+18	+51	+100	+126	+1.8	+65	+1.8	+2.0
	71%	52%	64%	66%	63%	57%	54%	52%	54%	56%	

Traits Observed: BWT,400WT Number of Herds: 0, Prog Analysed: 0, Genomic Prog: 0

## 57 QUARTER-WAY TERENCE T306#

HBR

Ident: **TLH22T306**

Born: **12/08/2022**

**AMFU,CAFU,DDFU,NHFU**

COONAMBLE JUNIOR J266<sup>PV</sup>  
**SFNQ148 NAMPARA JUNIOR Q148<sup>SV</sup>**  
 NAMPARA M112#

*Terence is a younger bull displaying good maturity. Strong pedigrees.*

BOONAROO JOIN J196SV  
**TLHQ78 QUARTER-WAY QUEZON Q78#**  
 QUARTER-WAY LEANDRIA L152#

Mating Type: **Natural** Pen: **8** Purchaser:..... \$.....

Mid August 2023 TransTasman Angus Cattle Evaluation											
TACE TransTasman Angus Cattle Evaluation	EBV	Birth Wt.	Milk	200 Wt.	400 Wt.	600 Wt.	Scrotal Size	Carcase Wt.	EMA	Rump Fat	IMF%
		Acc	+6.6	+11	+46	+85	+107	+1.5	+64	+4.1	-1.0
	72%	46%	64%	68%	63%	50%	54%	45%	47%	48%	

Traits Observed: BWT,400WT Number of Herds: 0, Prog Analysed: 0, Genomic Prog: 0

## 58 QUARTER-WAY TAZZIE T88#

HBR

Ident: TLH22T88

Born: 16/06/2022

AMFU,CAFU,DDFU,NHFU

G A R PROPHET<sup>SV</sup>  
**SMPQ400 PATHFINDER PROPHET Q400<sup>SV</sup>**  
 PATHFINDER BOWMAN G509#

CRICKLEWOOD CRACKER 399#  
**TLHL27 QUARTER-WAY LAUREL L27#**  
 QUARTER-WAY ELLY E15#

*Tazzie has an impressive pedigree and will grow out into a strong meaty bull.*

Mating Type: **Natural** Pen: **8** Purchaser:..... \$.....

Mid August 2023 TransTasman Angus Cattle Evaluation											
 TACE TransTasman Angus Cattle Evaluation	Birth Wt.	Milk	200 Wt.	400 Wt.	600 Wt.	Scrotal Size	Carcase Wt.	EMA	Rump Fat	IMF%	
	EBV	+5.5	+13	+51	+87	+111	+2.4	+52	+2.3	-0.3	+2.2
	Acc	73%	49%	65%	69%	64%	54%	56%	48%	51%	52%

Traits Observed: BWT,400WT Number of Herds: 0, Prog Analysed: 0, Genomic Prog: 0

## 59 QUARTER-WAY THADDEUS T115#

HBR

Ident: TLH22T115

Born: 07/07/2022

AMFU,CAFU,DD1%,NHFU

BEN NEVIS MYSTIC M97<sup>SV</sup>  
**TLHQ11 QUARTER-WAY QUAD Q11<sup>PV</sup>**  
 QUARTER-WAY FRANNIE F49PV

QUARTER-WAY EDMUND E11SV  
**TLHH92 QUARTER-WAY HENNA H92#**  
 QUARTER-WAY VEEMA D69#

*Thaddeus has a pedigree second to none. He will mature into a strong meaty bull. Fantastic structure and longevity.*

Mating Type: **Natural** Pen: **8** Purchaser:..... \$.....

Mid August 2023 TransTasman Angus Cattle Evaluation											
 TACE TransTasman Angus Cattle Evaluation	Birth Wt.	Milk	200 Wt.	400 Wt.	600 Wt.	Scrotal Size	Carcase Wt.	EMA	Rump Fat	IMF%	
	EBV	+8.1	+9	+40	+70	+91	+1.1	+46	+4.5	-1.8	+0.3
	Acc	72%	42%	59%	59%	58%	51%	49%	43%	47%	47%

Traits Observed: BWT Number of Herds: 0, Prog Analysed: 0, Genomic Prog: 0

## 60 QUARTER-WAY TALKING HEADS T402#

HBR

Ident: TLH22T402

Born: 12/09/2022

AMFU,CAFU,DDFU,NHFU

MERCHISTON STEAKHOUSE 489#  
**TLHN164 QUARTER-WAY OPTIONAL N164<sup>SV</sup>**  
 QUARTER-WAY JANICE J29#

QUARTER-WAY LANCELOT L10SV  
**TLHP79 QUARTER-WAY PHILANA P79#**  
 QUARTER-WAY ELSPETH E81#

*The baby of the sale. He has a lot of strength in his pedigree and will be a valuable asset to any herd.*

Mating Type: **Natural** Pen: **8** Purchaser:..... \$.....

Mid August 2023 TransTasman Angus Cattle Evaluation											
 TACE TransTasman Angus Cattle Evaluation	Birth Wt.	Milk	200 Wt.	400 Wt.	600 Wt.	Scrotal Size	Carcase Wt.	EMA	Rump Fat	IMF%	
	EBV	+6.5	+14	+47	+89	+119	+2.2	+63	+0.9	-3.1	-0.1
	Acc	72%	38%	64%	68%	64%	49%	54%	41%	43%	42%

Traits Observed: BWT,400WT Number of Herds: 0, Prog Analysed: 0, Genomic Prog: 0

## 61 QUARTER-WAY TRIXIE T293#

HBR

Ident: TLH22T293

Born: 08/08/2022

AMFU,CAFU,DD13%,NHFU

MERCHISTON STEAKHOUSE 489#  
**TLHN164 QUARTER-WAY OPTIONAL N164<sup>SV</sup>**

QUARTER-WAY JANICE J29#

BANQUET JESTER J687PV  
**TLHM159 QUARTER-WAY MARGE M159#**  
 QUARTER-WAY GILBERTA G35#

*Tomtrixie is our last offering at this sale. His pedigree determines his success. This young man will be a meat powerhouse.*

Mating Type: **Natural**

Pen: **8**

Purchaser:.....

\$.....

Mid August 2023 TransTasman Angus Cattle Evaluation

TACE		Birth Wt.	Milk	200 Wt.	400 Wt.	600 Wt.	Scrotal Size	Carcase Wt.	EMA	Rump Fat	IMF%
EBV		<b>+4.9</b>	<b>+17</b>	<b>+40</b>	<b>+73</b>	<b>+97</b>	<b>+1.3</b>	<b>+50</b>	<b>+2.0</b>	<b>-1.8</b>	<b>+0.1</b>
	Acc	69%	39%	58%	58%	60%	53%	48%	44%	46%	45%

Traits Observed: BWT,400WT Number of Herds: 0, Prog Analysed: 0, Genomic Prog: 0







# BRINGING YOUR NEW BULL HOME

WHEN PURCHASING A BULL, CARE AND HANDLING AFTER THE SALE CAN BE AS IMPORTANT AS THE PURCHASE ITSELF. LOOKING AFTER YOUR BULL WELL DURING THE INITIAL STAGES OF HIS WORKING LIFE MAY ENSURE LONGEVITY AND SUCCESS WITHIN YOUR BREEDING HERD.

## PURCHASE

Temperament is an important characteristic when selecting a bull. Selecting a bull that may be flighty or aggressive will make life difficult for you each time he is handled. Note which bulls continually push to the centre of a mob, run around, or are unreasonably nervous, aggressive or excited.

At the sale, note any changes of temperament by individual bulls. Some bulls that are quiet in the yard or paddock may not like the pressure and noise of the auction and become excited. Others that were excited beforehand get much worse in the sale ring and can really perform. Use the yard or paddock behaviour as a guide, rather than the temperament shown in the ring.

## DELIVERY

When transporting your new bull insurance against loss in transit, accidental loss of use, or infertility, is sometimes provided by vendors. Where it is not, it is worth considering. After purchase tips:

- When purchasing, ask which health treatments he has received.
- Treat and handle him quietly at all times - no dogs, no buzzers. Talk to him and give him time and room to make up his mind.
- With more than one bull from different origins, you must be able to separate them on the truck.
- Make sure that the truck floor is covered to prevent bulls from slipping. Sand, sawdust or a floor grid will prevent bulls from being damaged by going down in transit.
- If you can arrange it, put a few quiet cows or steers on the truck with the bull. Let them down into a yard with the bulls for a while before loading and after unloading.
- Unload and reload during the trip as little as possible. If necessary, rest with water and feed. Treat bulls kindly your impatience or nervousness is easily transmitted to an animal unfamiliar to you and unsure of his environment.

## IF YOU USE A PROFESSIONAL CARRIER:

- Make sure the carrier knows which bulls can be mixed together.

- Discuss with the carrier, resting procedures for long trips, expected delivery time, truck condition and quiet handling.
- Give ear tag and brand numbers to the carrier and make sure you have the carrier's phone number.
- If buying bulls from interstate, organise any necessary health tests before leaving and work out if any other requirements must be met before cattle can come into another State.

When buying bulls from far away, you may often have to fit in with other delivery arrangements to reduce cost. You should make it clear how you want your bulls handled.

## ARRIVAL

When the bull or bulls arrive home, unload them at the yards into a group of house cows, steers or herd cows. Never jump them from the back of a truck directly into a paddock—it may be the last time you see them. Bulls from different origins should be put into separate yards with other cattle for company.

Provide hay and water, then leave them alone until the next morning.

The next day, bulls should receive routine health treatments. If they have not been treated before, all bulls should be vaccinated with:

- 5-in-1 vaccine;
- vibriosis vaccine;
- leptospirosis vaccine (if in areas like the Hunter where leptospirosis exists);
- three-day sickness vaccine (if in areas where this sickness can cause problems).

Give particular attention to preventing new bulls bringing vibriosis into a herd. Vibriosis, a sexually transmitted disease, causes infertility and abortions and is most commonly introduced to a clean herd by an infected bull. These bulls show no signs of the illness. Vaccinated bulls are free from vibriosis, so vaccinating bulls against the disease should be a routine practice.

Vaccination involves two injections, 4-6 weeks apart, at the time of introduction, and then a booster shot every year. Complete the vaccinations 4 weeks before joining.

PURCHASE

DELIVERY

AFTER PURCHASE TIPS

ARRIVAL

MATING NEW YOUNG BULLS

MANAGING OLDER HERD BULL

DURING MATING

NORTHERN AUSTRALIA





Consult with your veterinarian and draw up a policy for treating bulls on arrival and then annually. Bulls should be drenched to prevent introducing worms and, if necessary, should be treated for lice.

Plan to give follow-up vaccinations 4–6 weeks later. Leave the bulls in the yards for the next day or two on feed and water to allow them to settle down with other stock for company. A bull's behaviour will decide how quickly he can be moved out to paddocks.

## MATING NEW YOUNG BULLS

Newly purchased young bulls should not be placed with older herd bulls for multiple-sire joining. The older, dominant bull will not allow the young bulls to work, and will knock them around while keeping them away from the cows.

Use new bulls in either single-sire groups or with young bulls their own age. If a number of young bulls are to be used together, run them together for a few weeks before joining starts. They sort out their pecking order quickly and have few problems later.

When the young bulls are working, inspect them regularly and closely.

## MATING NEW YOUNG BULLS

Older working bulls also need special care and attention before mating starts. They should be tested or checked every year for physical soundness, testicle tone, and serving capacity or ability.

All bulls to be used must be free-moving, active and in good condition. Working bulls may need supplementary feeding before the joining season to bring up condition.

## DURING MATING

- Check bulls at least twice each week for the first 2 months. Get up close to them and watch each bull walk; check for swellings around the sheath and for lameness.
- Have a spare bull or bulls available to replace any that break down. Replace any suspect bull immediately.
- Rotate bulls in single-sire groups to make sure that any bull infertility is covered. Single-sire joining works well but it has risks. The bulls must be checked regularly and carefully, or the bulls should be rotated every one or two cycles.

Bulls are a large investment for breeding herds and they have a major effect on herd fertility. A little time and attention to make sure they are fit, free from disease and actively working is well worthwhile.

## NORTHERN AUSTRALIA

Although the Angus breed originated in a cooler climate, they can adapt to subtropical regions with many straight-bred and cross bred producers finding success in Northern Australia. Some of the following information may also be helpful for new bulls located in more temperate climates.

## ADAPTATION

The key to Northern success for Angus is that cattle introduced from the Southern regions of Australia be allowed to adapt to their new environment before commencing their working life. If possible, a break of 3 months is advisable before you set your bull to work.

## PURCHASE IN COOLER MONTHS

Ensure your bulls are in good condition before they do commence their working life. The cooler months are an ideal time to purchase and introduce Angus cattle, allowing them plenty of time to acclimatise.

## CHANGE OF FEED SOURCE

When inducting Angus cattle into your herd consider their source of feed. Have you taken an animal which has been supplemented on grain straight to a dry pasture? Animals should be gradually changed over to their new feed to ensure they do not lose condition. This may involve using supplements which could include dry lick/urea blocks.

## MANAGING CATTLE TICKS

For ticky areas, bulls should be vaccinated prior to transport and given another booster afterwards. Remember males are more susceptible to ticks than females.

Information is provided by the Department of Primary Industries NSW. For further information visit the DPI web site: [www.dpi.nsw.gov.au](http://www.dpi.nsw.gov.au). or [www.angusaustralia.com.au](http://www.angusaustralia.com.au). Further reading - Buying Angus Bulls

**FOR FURTHER INFORMATION VISIT**  
[www.angusaustralia.com.au](http://www.angusaustralia.com.au)

Angus Australia Locked Bag 11, Armidale NSW 2350  
Phone: (02) 6772 3011 | Fax: (02) 6772 3095  
Email: [office@angusaustralia.com.au](mailto:office@angusaustralia.com.au)  
Website: [www.angusaustralia.com.au](http://www.angusaustralia.com.au)





# LIVESTOCK AUCTION TERMS AND CONDITIONS OF SALE

## CHAPTER ONE - PRELIMINARY

1. (a) A vendor is bound by these terms and conditions by offering livestock for sale by auction.

(b) The vendor (which includes an auctioneer) is bound by these terms and conditions by conducting an auction sale.

(c) A buyer is bound by these terms and conditions by bidding at auction.

(d) **Competition and Consumer Act (Cth) 2010**

It is unlawful for parties that are, or otherwise would be, in competition with each other to make, or give effect to, a contract, arrangement or understanding that contains a provision relating to:

- i. price-fixing; or
- ii. restricting outputs in the production and supply chain; or
- iii. allocating customers, suppliers or territories; or
- iv. bid-rigging; or
- v. collusive bidding.

Large fines and other sanctions may be imposed for unlawful conduct.

2. (a) In these terms the expression auctioneer, agent, buyer and vendor respectively includes the servants, contractors and agents of each of them. The auctioneer, agent, buyer and vendor shall be wholly responsible for the acts and omissions of their respective servants, contractors and agents. The term "auctioneer" includes, so far as the law and context permits, the vendor's agent.

(b) When used in these terms the expressions "companion animals" means all animals originating from the same property on a particular day. Where lots are split and sent to multiple establishments, then all of these animals shall be regarded as companions.

3. The following applies in interpreting these terms and conditions:

(a) The following words have the following meanings:

Fees means all levies, charges, fees, costs and other expenses incurred or relating to these terms and conditions and the sale and purchase of livestock including, without limitation, transaction fees, yard and weigh dues, cartage, advertising and rebates, and whether paid for, or incurred, by the agent.

Livestock means animals auctioned pursuant to these terms and conditions, and

Price means the amount at which the lot has been sold to the buyer referred to in clause 7 of these terms and conditions

(i) plus any Fees and other expenses incurred in relation to the purchase of livestock that are payable by the buyer; and

(ii) plus any GST added in accordance with clause 12.

(b) These terms and conditions are subject to legislation or regulation in the State in which the auction is conducted and in the event of any conflict then the legislation or regulation will prevail. The provisions of these terms and conditions are in addition to, and do not derogate from, the duties and rights of vendors, agents and buyers set out in legislation and regulation in the State in which the auction is conducted.

## CHAPTER TWO - STANDARD TERMS OF SALE

4. Subject to these terms and conditions, and to the right, prior to the fall of the hammer, of the vendor to withdraw any lot without declaring the reserve, the highest bidder shall be the buyer.

5. The auctioneer has the right to bid on behalf of the vendor provided that right is notified prior to the commencement of the sale and is subject to State law.

6. A bid cannot be made or accepted after the fall of the hammer unless, in accordance with clause 8, the auctioneer decides to put the lot up again.

7. Prior to the fall of the hammer the auctioneer shall announce the last bid and receive any further bids. The last price called by the auctioneer at the fall of the hammer shall be the amount at which the lot has been sold.

8. In the event of a disputed bid, the auctioneer is the sole arbitrator of the successful bidder or the auctioneer may decide to put the lot up again. The auctioneer's decision is final.

9. The auctioneer may refuse to accept any bid which, in the auctioneer's opinion, is not in the best interest of the vendor and need not give reasons for doing so.

10. A bidder shall be deemed to be a principal unless, prior to bidding, the bidder has given to the auctioneer a copy of written authority to bid for or on behalf of another person.

11. The successful bidder at a livestock auction sale must give to the auctioneer at the fall of the hammer:

- (a) the purchaser's name; or
- (b) the bid card number which identifies the purchaser; or
- (c) the name of the person on whose behalf the successful bid was made; and

(d) the Property Identification Code (known as the "PIC") of destination.

12. The auction shall be conducted on the basis that the bid price shall be exclusive of Goods and Services Tax (GST). GST shall be added after the fall of the hammer for those sales subject to GST.

13. The vendor warrants:

- (a) That the vendor has (or will have) the right to sell the livestock at the time of delivery; and
- (b) That the purchaser will obtain title on completion of the purchaser's obligations under this contract including payment.

14. If a buyer does not comply with any of these terms and conditions, which includes the requirements of State law, any livestock knocked down to that buyer may be re-sold by public auction or private contract in whatever lots and manner the auctioneer decides. The re-sale may be with or without notice and shall be at the buyer's risk. The buyer is responsible for all loss and expense arising out of a re-sale and is not entitled to any resulting profit.

15. The buyer of livestock must pay the agent the full amount of the purchase price in immediate funds on receipt of a tax invoice. Payment is required prior to delivery unless some other time for payment is specified in an agreement between the buyer and the auctioneer that was made before the fall of the hammer. If, before delivery, payment has not been made then clauses 20 to 23 apply.

16. No person may bid unless, prior to the commencement of the sale, that person has made arrangements satisfactory to the auctioneer for payment for livestock purchased. If bids in breach of this condition are inadvertently accepted, delivery shall not be given until the purchase money is paid and any law, rule or practice to the contrary is accordingly negated as far as possible.

17. (a) Cattle sold on a live/weight basis that are weighed pre-sale are at the risk and expense of the buyer upon the fall of the hammer.

(b) Cattle sold on a live/weight basis that are weighed post-sale are at the risk and expense of the buyer immediately after weighing.

(c) All livestock other than cattle sold on a live/weight basis are at the risk and expense of the buyer upon the fall of the hammer.

18. (a) Subject to this clause the sale is complete on the fall of the hammer.

(b) The time for rejection is the time commencing at the fall of the hammer and ending at the first of:

- (i) delivery is taken by a representative of the buyer;
- (ii) departure of the animal from the purchaser's delivery pen; or
- (iii) one hour after the last animal is:
  - a. in the case of pre-sale weighing, sold; or
  - b. in the case of post-sale weighing, weighed.

(c) During the time for rejection the buyer may reject any animal which is lame, blind or diseased where that condition existed prior to the fall of the hammer but could not be reasonably observed when the animal was in the selling pen.

(d) If the purchaser rejects an animal during the time for rejection then the sale of that animal is cancelled and the animal is returned to the vendor or sold on such terms as any buyer and the agent may agree, after the agent has disclosed the reason for rejection to that buyer.

(e) This subclause applies only to cattle which are sold in Queensland at auction for slaughter. The agent has responsibility for the prevention of loss or escape (but not death, sickness or injury) of those cattle from the time of the fall of the hammer, for delivery to and from the scales, to the buyer's delivery pen and onto the buyer's nominated transport. This responsibility ends at the earlier of those cattle boarding the buyer's nominated transport or sunset on the day after the sale. This

subclause does not apply if the agent makes an announcement to that effect prior to sale.

19. (a) Subject to the right of rejection in Clause 18, all conditions and warranties expressed or implied by law are hereby excluded from the sale to the extent that the law allows. All lots are open for inspection prior to the commencement of the sale and are sold with all faults, if any. No compensation shall be given for any faults, imperfections, errors of description, number in or of any lots sold or otherwise.

(b) Any claim or objection arising out of an error or misdescription in the provision of relevant information in terms of legislation or regulation concerning the National Livestock Identification Scheme (NLIS) must be made by 5:00pm on the seventh day after the fall of the hammer. No objection, requisition or claim against the vendor or agent in respect of such error or misdescription can be made after that time.

(c) Any statements made by the vendor or the auctioneer whether in writing or orally to the effect that any female has been pregnancy tested or scanned positive shall mean and require only that certificate in writing shall be supplied to the buyer signed by a qualified veterinary surgeon or certified scanner certifying that the said female has been tested or scanned on the date specified in the certificate and that in the opinion of the surgeon or scanner was pregnant on that date.

(d) For slaughter cattle, the agent undertakes to make every reasonable effort to ensure that any NLIS cattle device number is transferred from the saleyard PIC to the purchaser's PIC on the NLIS database no later than midnight on the day of the sale.

(e) For other slaughter livestock the agent undertakes to make every reasonable effort to ensure that the NLIS information is transferred from the saleyard PIC to the purchaser's PIC on the NLIS database no later than midnight on the day of the sale.

(f) Where livestock have a food safety or market eligibility status derived from the National Vendor Declaration (NVD) and/or the NLIS/ERP database, the agent will inform the buyers by pre-sale catalogue and/or announce the status prior to the offering of those lots.

20. If delivery is made, or possession obtained by, the buyer or its representative before full payment of the Price, then until full payment is received, the buyer:

- (a) does not acquire title to the livestock;
- (b) holds the livestock as bailee only for the vendor;
- (c) must act in a fiduciary capacity in its relationship with the vendor;
- (d) must store the stock separately or so that they are readily distinguishable from other livestock owned by the buyer;
- (e) is responsible for the safety and well being of the livestock;
- (f) may make a bona fide sale for market value of any or all of the livestock. As between the buyer and the subsequent buyer, the sale shall be made by the buyer in its own name and not as agent for the vendor, however as between the vendor and buyer, the sale shall be made as bailee and agent for the vendor; and
- (g) must keep and account for the proceeds of any subsequent sale separately from its other money and hold those proceeds, together with the benefits of any rights against subsequent buyers, on trust for the vendor.

21. The purchaser agrees that:

(a) Clause 20 creates a registrable security interest under the Personal Property Securities Act (Cth) 2009 (PPSA);

(b) The Purchaser acknowledges the rights of the Seller (and/or the Agent if Clause 25 applies) to register a financing statement under the PPSA with respect to the security interest created by this clause;

(c) the Livestock are collateral for the purposes of the PPSA;

(d) to the extent permitted, the Purchaser waives any right the Purchaser has under the PPSA to receive notices; and

(e) the date upon which the security interest created by this clause comes into force is the first date on which livestock are delivered pursuant to this contract.

22. The buyer may not make any claim against the vendor for actions by the vendor or its agent under clauses 20 or 21 and indemnifies the vendor and its agent against any loss, damage, costs, expenses, penalties, fines or claims suffered by the vendor, the agent or any person or entity arising from the vendor exercising its rights under clauses 20 or 21.

23. Clause 23 applies whenever the agent pays the vendor before being paid by the buyer, which the agent is not bound to do. The agent is then the del credere agent of the vendor at law.

23.2. The vendor hereby gives notice to the buyer of the assignments referred to in clause 23.3.

23.3. When this clause applies, in addition to any rights of the agent that arise by operation of law, the parties agree that, subject to clause 23.5, the agent is subrogated to all rights of the vendor under these terms and conditions against the buyer.

23.4. The vendor acknowledges that the agent may take enforcement, repossession or other action to recover any livestock for which the buyer has not paid in full, or the Price of such livestock, owing by the buyer under these terms and conditions:

- (a) when this clause does not apply, as agent of the vendor (including by reselling the livestock); and
- (b) when this clause applies, on the agent's own behalf exercising the rights of the vendor by subrogation or assignment under these terms and conditions (whether in the vendor's name or not) and, where title to the livestock has not passed to the agent, by selling the livestock as agent of the vendor without the agent having to account to the vendor for the proceeds of sale.

23.5. The agent may at any time, assign, transfer, securitise or otherwise dispose of all or any of its rights under these terms and conditions and any debts created pursuant to it (including, without limitation, the rights assigned to it under clause 23.3).

23.6. The vendor hereby irrevocably appoints the agent as the vendor's attorney to:

- (a) do at any time and in any manner as the agent thinks fit all acts necessary or desirable to perfect or improve the rights and interests afforded, or intended to be afforded, to the agent under these terms and conditions; and
- (b) appoint one or more sub-attorneys to do anything that the agent may do as the vendor's attorney.

23.7. These terms and conditions do not render the agent liable to the buyer as vendor nor entitle the buyer to set off against the agent any right the buyer may have against the vendor or otherwise.

23.8. The buyer acknowledges that the provisions of this clause 23 are intended solely for the benefit of the agent (and its assigns) and the vendor. The liabilities and obligations of the buyer will not be in any way affected:

- (a) by this clause 23, other than as it expressly provides; or
- (b) by the failure of the agent or the vendor or either of them to comply with the terms of this clause 23.

23.9. The buyer must pay all amounts payable to the vendor or the agent under these terms and conditions without any deduction, withholding, set off or counterclaim whatsoever, whether the benefit of a deduction, withholding, set off or counterclaim is alleged to exist in favour of the buyer as against the vendor or the agent in any capacity whatsoever or any other person including any assignor of the vendor's or the buyer's interests under these terms and conditions.

24. The agent agrees that he is liable to pay to the vendor the Price, less such commission as is agreed between the vendor and the agent, and in the absence of any agreement such amount as is reasonable, and less the Fees that are payable by the vendor that were incurred by the agent on behalf of the vendor in relation to the sale of the livestock.

(b) In the event that the buyer pays the Price or part of it direct to the vendor then the agent has no liability to the vendor for the amount of such payment. Further, if the agent pays the vendor any amount which the buyer also pays direct to the vendor in respect of the same livestock, then the vendor must repay the agent that amount and the agent may debit that amount to an account held in the name of the vendor by the agent.

(c) Regardless of whether or not a sale has occurred the agent may, but is not under obligation to do so, instead of deducting payments owed to it by the vendor, debit the amount of the commission and fees to an account held in the name of the vendor by the agent.

25. (a) The auctioneer has been retained by the vendor as auctioneer for the purpose of selling the livestock comprised in the lots. The terms of

engagement between the auctioneer and the vendor do not extend to the provision of any sale by the auctioneer to the vendor in relation to the safety or otherwise of the sale ring, the saleyards and the surrounding environments.

(b) The vendor, the agent and the buyer agree to comply with their several duties under the Australian Animal Welfare Standards and Guidelines for the Land Transport of Livestock and further to consign, manage, receive, transport and handle livestock in accordance with any other or additional requirements of animal welfare legislation specific to the jurisdiction in which livestock are consigned, managed, received, transported and handled in the course of the auction process.

## CHAPTER THREE - VENDOR WARRANTY FOR CORRECT PRESENTATION AND DECLARATION

26. This chapter applies only in the case of livestock and their companion animals sold at auction for slaughter when the buyer is the slaughterer and the livestock are transported direct from the sale yard to the meatworks at which they are slaughtered. This chapter does not apply if the buyer is a trader who subsequently resells the livestock to a slaughterer. A slaughterer is any person who pays the AMPC Processor levy.

27. The warranty of a vendor is that Livestock and their companion animals offered for sale at auction:

- (a) pass government and other regulatory authority requirements and inspections at the time of slaughter;
- (b) are of merchantable quality;
- (c) carry an NLIS device in accordance with State law;
- (d) in the case where a representation has been made in the pre-sale catalogue that the livestock have particular characteristics or are fit for a particular purpose or market, and such representations are based on information in any document, the livestock will have those characteristics or will fit for the particular purpose or market; and
- (e) all information in any document provided by the vendor is true, complete and correct in all material respects.

28. In the event of a breach by the vendor of the vendor's warranty and provided such breach is notified by the buyer to the agent by 5:00pm on the 7<sup>th</sup> day after the fall of the hammer then the buyer is not liable to pay the portion of the Price of such of the vendor's livestock to which the breach applies.

29. However if the breach by the vendor is such that the livestock are not rejected outright but are instead downgraded then the buyer will pay the value of the livestock at their next highest and best use.

30. In the case of a breach by the vendor of the vendor's warranty then the vendor will also be liable to the buyer for any further losses which the buyer might establish but the buyer will take all reasonable steps in co-operation with the agent and vendor to mitigate both the effect of the breach and the amount of any loss.

31. Where a sentinel animal of a lot tests positive for chemical residue, or foreign material contamination and provided such test is certified and notified as required by these vendor warranty terms, then:

(a) the buyer will be entitled to delay payment for the price of all livestock in that lot only; or

(b) the vendor has the option, at the vendor's cost, of collecting the companion animals, if allowed by law, or of having the livestock slaughtered in which event the risk of further condemnations will be that of the vendor. Where product integrity is potentially jeopardised, the Processor has the right to refuse slaughter and send the livestock back to the consigning property at the vendor's cost.

32. The auctioneer is liable to the buyer in respect of any breach of the vendor's warranty arising out of:

- (a) any error, by the auctioneer, of transcription of information from the NVD completed by the vendor to the pre-sale catalogue or the buyers post-sale summary;
- (b) any failure by the auctioneer to notify the buyer, prior to bidding, of any breach by the vendor of the warranty of the vendor if the buyer establishes that the agent knew of such breach prior to the sale; and
- (c) any failure by the auctioneer to announce prior to bidding, or disclose in the pre-sale catalogue, that the vendor has failed to provide a NVD that is complete in all material aspects.

## CHAPTER FOUR - OWNERS RISK FOR CONDITION OF CATTLE

33. This chapter applies only in the case of cattle and their companion animals sold at auction for slaughter when the buyer is the slaughterer and the cattle are transported direct from the sale yard to the meatworks at which they are slaughtered. This chapter does not apply if the buyer is a trader who subsequently resells cattle to a slaughterer. A slaughterer is any person who pays the AMPC Processor levy.

34. Owners risk reflects the producer's responsibility to provide slaughter cattle for sale that are fit for human consumption. Cattle are fit for human consumption if they are not condemned as unfit by government. Owners risk applies if the condemnation is due to a condition in the animal which the buyer establishes by the relevant government certificate, existed prior to the fall of the hammer.

35. A buyer with the benefit of owners risk protection is not liable to pay the Price of that animal to the vendor. The buyer remains nevertheless liable for all costs incurred after the fall of the hammer in transport, slaughter, testing and disposal of the animal.

36. Owners risk protection is available to the buyer of cattle to which this chapter applies if all of the following are satisfied:

- (a) a certificate is issued by government which states the relevant NLIS RFID tag number and PIC, the date of the certificate, the reason for condemnation and that the reason for condemnation existed prior to the fall of the hammer;
- (b) the certificate is received by the selling agent either in its original form or by fax or electronic communication in the form of data, text or imaging by 5:00pm on the 7<sup>th</sup> day after the fall of the hammer; and
- (c) if the condemnation is due to chemical residue the certificate follows testing in a government approved laboratory which establishes maximum residue limits in excess of the Australian limit.

37. Owners risk does not apply, and the buyer must pay for the cattle, if the reason for condemnation is any of bruising, fever, partial condemnation or emaciation.

## CHAPTER FIVE - NOTICES REQUIRED BY LEGISLATION

### NSW Property, Stock and Business Agents Act 2002 Warnings

Penalties for collusive practices. It is an offence against the Property, Stock and Business Agents Act 2002 for a person to do any of the following as a result of a collusive practice, or to induce or attempt to induce another person by a collusive practice to do any of the following:

- (i) to abstain from bidding; or
- (ii) to bid to a limited extent only; or
- (iii) to do any other act that might prevent free and open competition.

Severe penalties may be imposed on persons convicted of collusive practices.

The auctioneer has the right to make one bid on behalf of the vendor if the auctioneer clearly and precisely announces that fact prior to the sale.

Tasmania Legislation. An auctioneer conducting a public auction must not appear to acknowledge the making of a bid if no bid was made. A person must not participate in collusive practices by way of making or receiving an unlawful promise to abstain from bidding, not to bid except to a limited extent or do any other thing which may prevent free and open competition.

### WA Auction Sales Act 1973 s31 NOTICE

It is an offence to:

- (i) induce or attempt to induce another person to abstain from bidding by means of a promise, expressed or implied, that the other person will have the right to elect to take over as buyer or to toss or draw lots to establish who is to become the owner;
- (ii) abstain or agree to abstain from bidding as a result of such a promise;
- (iii) knowingly enter or permit or cause to be entered in the auctioneer's record any name other than that of the actual successful bidder;
- (iv) enter in the auctioneer's record the name of the buyer other than that of the actual successful bidder; or
- (v) in the case of successful bidder supply wrong information as to the name of the buyer to the auctioneer or to any person, firm or corporation on whose behalf the sale is conducted.

The vendor, or any person on behalf of the vendor, or the auctioneer have the right to make no more than three bids.



© FEBRUARY 2017 Australian Livestock & Property Agents Association Limited All rights reserved.

Unauthorised reproduction in whole or in part is an infringement of copyright.

These Livestock Auction Terms & Conditions of Sale are provided to ALPA members as recommended terms and conditions only.



## G'day fellow beef producers!

Winter has been relatively kind to us, so far. Wet enough, not many frosts. So far so good, and only a few weeks before spring kicks in.

Beef market is tough enough now in Australia. However, in America prices are at record levels.

Supply over there is tight and female kill is running at 54%, so no sign of herd rebuilding yet. For this to happen female kill needs to be back to 47%.

To quote Steve Kay, publisher of US Cattle Buyers Weekly, US beef production will drop 4% from 2022, and USDA forecast the 2024 production to drop 8.9%, a big fall in production.

Once this begins it will create big opportunity for Australian Beef. Hopefully the job will be on fire again soon.

Here's to a great season and good prices.

*Trev*



## HELP WHEN IT MATTERS



PLEASE CONTACT OUR AGRIBUSINESS MANAGERS

**JIM CUMING**  
Senior Relationship Manager - 0423 049 797

**JASON BARKER**  
Agribusiness Banking Manager - 0434 654 103

**DAVE MILNER**  
Regional General Manager - 0418 373 395



**BUYERS INSTRUCTION SLIP**

NAME: .....

ADDRESS: .....

POSTCODE: .....

EMAIL: .....

PHONE: .....

MOBILE: .....

BUYERS PIC: .....

PLEASE INDICATE IF ANGUS AUSTRALIA TRANSFER REQUIRED: YES / NO

ANGUS AUSTRALIA HERD ID: .....

STUD PREFIX: .....

ACCOUNT TO: .....

AGENT: .....

LOTS PURCHASED: .....

**DELIVERY INSTRUCTIONS**

INSURANCE (Period): .....

BUYER SIGNATURE (or AGENT NAME/SIGNATURE):

DATE: .....

Payment will be due on Friday 29 SEPTEMBER 2023.

**SPECIAL NOTICE TO BUYERS**

- 1. In the interest of buyers and to prevent the occurrence of mistakes, all instructions concerning delivery, trucking and shipping of cattle, must be given IN WRITING and signed by the buyer or his representative..
- 2. Please ensure Instruction is completely filled in.

INSURANCE - PLEASE CHECK WITH YOUR INSURANCE AGENT THAT COVER IS FOR LOSS OF USE AS WELL AS DEATH.







**QW**  
**QUARTERWAY**  
ANGUS

