

GENETICS TO BREED YOUR PROFIT

# ANNUAL AUTUMN BULL SALE

FRIDAY 15TH MARCH 2024 | 1PM



**QW**  
**QUARTERWAY**  
ANGUS









# Annual Autumn Bull Sale 2024

## FRIDAY 15 MARCH - 1PM

### 61 BULLS / 18 - 20 Months

ON-PROPERTY & ONLINE  
INTERFACED with AUCTIONSPLUS  
View from 10am - Auction 1pm

Enquiries welcome.  
Complimentary BBQ Lunch available after the sale

**TREVOR & TERESA HALL**  
Trevor - 0409 210 055  
midwaycattle@bigpond.com

#### SELLING AGENTS

NUTRIEN LIVESTOCK, Launceston - 03 6391 6539  
ELDERS LAUNCESTON - 03 6398 8500



Daniel Morice - 0409 170 419  
Nigel Brown - 0418 595 407



Jock Gibson - 0418 133 595  
Warren Johnston - 0419 326 348  
Graeme Bligh - 0439 175 069  
Cooper Lamprey - 0429 304 110



**SALE LOCATION**  
"Lyndhurst"  
2235 Waterhouse Road,  
Waterhouse, Tasmania



## GUARANTEE

In the event of a bull proving to be infertile for natural service in the first six months from sale date, the vendor will offer to supply a replacement (if available), or credit the purchase price (less any salvage value of the bull) to be used at the next sale.

This is provided the problem is not caused by injury or disease since sale day. Any claim must be accompanied by a relevant veterinary certificate. Two semen tests - a minimum of six weeks apart - to accompany claims of infertility.

## CARING FOR YOUR BULL

These bulls have never been alone. Please have companions in the yards for them to go in with when they arrive at your farm.

## ANIMAL HEALTH

All catalogued bulls are ear-notched negative for Pesti, are vaccinated for Pesti, and received the 7 in 1 Dectomax & MultiMin vaccinations.

## ANIMAL DETAILS

Animal details included in this catalogue, including but not limited to pedigree, DNA information, Estimated Breeding Values (EBVs) and Index Values, are based on information provided by the breeder or owner of the animal.

Whilst reasonable care has been taken to ensure all the information provided in this catalogue was correct at time of publication, Angus Australia will assume no responsibility for the accuracy or completeness of the information, not for the outcome (including consequential loss) of any action taken on this information.

The suffix displayed at the end of each animal's name indicates the DNA percentage verification that has been conducted by Angus Australia.

PV - both parents have been verified by DNA

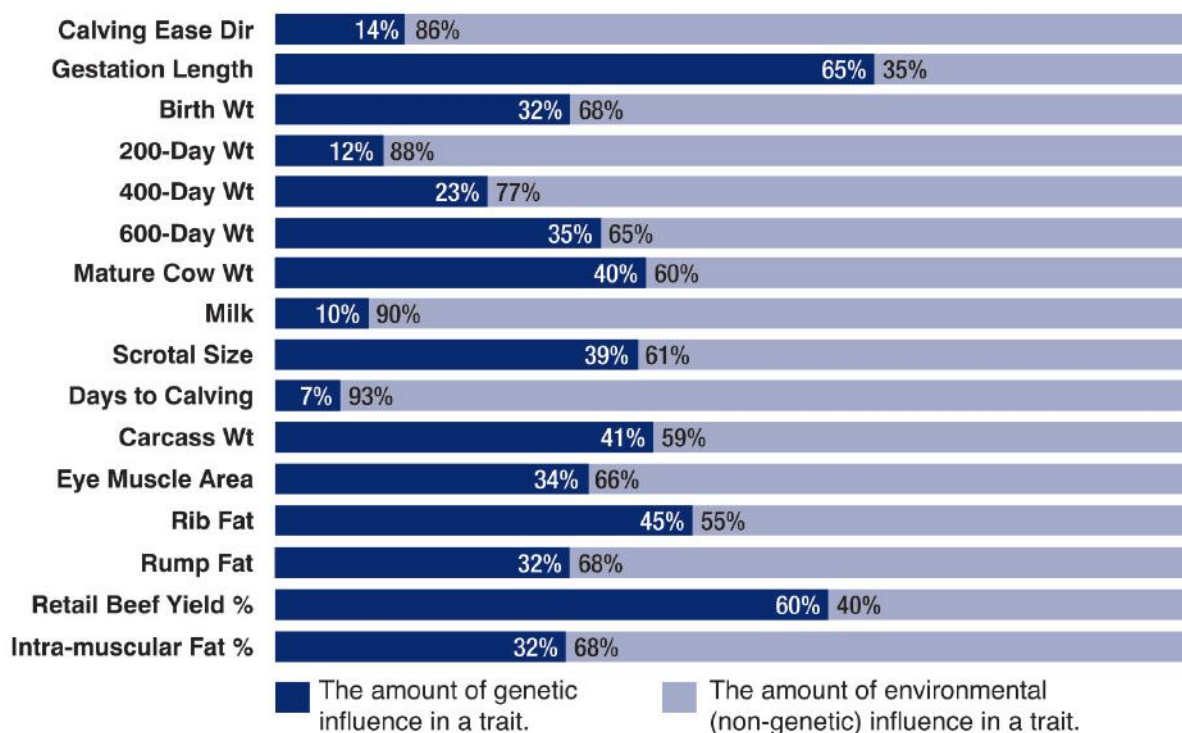
SV - the sire has been verified by DNA

DV - the dam has been verified by DNA

# - DNA verification has not been conducted

E - DNA verification has identified the sire and/or dam may possibly be incorrect, but this cannot be confirmed conclusively.

## Heritability Estimates





## **The team at Quarterway Angus welcome you to our Annual Autumn Bull Sale.**

We are experiencing a very tough season, dry and windy but that is farming.

It is in these conditions that cattle with a good constitution stand out. Testament to our breeding principles, the cows are doing it hard, but still keeping themselves and their calves well.

We are presenting a very even line of bulls in our Autumn sale from Lot 1 to Lot 61. Running a large stud cow herd gives us a great range of top bull to select for sale.

We have a great range of sire lines, all of similar type - quiet temperaments, good feet and structure, plenty of depth, strong hindquarters, weight for age and solid data.

Sire Nampara Junior was the top priced bull at the Nampara Autumn sale in 2021. Top sons of this stud sire are available in the sale.

Pathfinder Prophet, son of GAR prophet, was the top priced bull at Pathfinder 2021 Autumn sale in South Australia. Producing a fantastic line of progeny.

Another feature sire, Texas Reality P224 also has a top line of quality sons in the sale.

Millah Murrah Quixote is another exciting sire producing quality progeny in our herds.

Home bred sires Princeton and Optional, both Merchiston Steakhouse sons, and Quad, Ben Nevis Mystic sons feature strongly in our autumn sale.

Merchiston Steakhouse is one of the top sires in New Zealand and owned by Kay Jay Angus. He has bred several AI sires for them.

Our homebred sires prove their worth successfully in the commercial herd before being promoted to the stud. They are performing equally as well within their peer group as the outside sires.

Hoping to see you at the sale on Friday 15 March. Viewing from 10am, or if you would like a private inspection please give us a call. Complimentary BBQ to follow.

*Trevor and Teresa*





RS

TURIROA RAGNAR 18P224#

HBR

Ident: NZE15603018P224Born: 3/9/2018AMF,CAF,DDF,NHF,DWF,MAF,MHF,OHF,OSF,RGF

MATAURI COMPLETE F010#

NZE15603016M013 TURIROA COMPLETE 16M013#


TURIROA 131003#

TURIROA BLACKHEART 10658#

NZE15603115L090 TURIROA L090#

TURIROA 11861#

Mating Type: Natural

Mid February 2024 TransTasman Angus Cattle Evaluation											
<div><div>TACE</div><div></div><div>TransTasman Angus Cattle Evaluation</div></div>	Birth Wt.	Milk	200 Wt.	400 Wt.	600 Wt.	Scrotal Size	Carcase Wt.	EMA	Rump Fat	IMF%	
	EBV	+4.4	+17	+49	+95	+135	+3.2	+70	+2.3	+2.1	+0.9
	Acc	97%	75%	95%	95%	95%	94%	80%	82%	82%	82%

Traits Observed: BWT,200WT,400WT,600WT,Scan(EMA,Rib,Rump,IMF),Genomics | Statistics: Number of Herds: 12, Prog Analysed: 210, Genomic Prog: 93

RS

NAMPARA JUNIOR Q148<sup>SV</sup>

HBR

Ident: SFNQ148Born: 4/4/2019AMF,CAF,DDF,NHF,DWF,MAF,MHF,OHF,OSF,RGF

TUWHARETOA REGENT D145<sup>PV</sup>

WDCJ266 COONAMBLE JUNIOR J266<sup>PV</sup>


BANGADANG LOWAN A61<sup>PV</sup>

ABERDEEN ESTATE FOKKER F27<sup>PV</sup>

SFNM112 NAMPARA M112#

WITTALOCKA EDITION G94#

Mating Type: AI

Mid February 2024 TransTasman Angus Cattle Evaluation											
<div><div>TACE</div><div></div><div>TransTasman Angus Cattle Evaluation</div></div>	Birth Wt.	Milk	200 Wt.	400 Wt.	600 Wt.	Scrotal Size	Carcase Wt.	EMA	Rump Fat	IMF%	
	EBV	+6.4	+10	+52	+90	+114	+1.7	+72	+9.7	-0.6	+1.5
	Acc	94%	77%	89%	89%	89%	86%	78%	75%	76%	78%

Traits Observed: GL,BWT,200WT,400WT,600WT,SC,Scan(EMA,Rib,Rump,IMF),Genomics | Statistics: Number of Herds: 3, Prog Analysed: 87, Genomic Prog: 2

RS

QUARTER-WAY PRINCETON P124<sup>PV</sup>

HBR

Ident: TLHP124Born: 10/6/2018AMFU,CAFU,DDFU,NHFU

MERCHISTON EXCLUSIVE 269#

NZE14738014489 MERCHISTON STEAKHOUSE 489#


MERCHISTON RANGI 684#

BANQUET ABODE A005<sup>PV</sup>

TLHH58 QUARTER-WAY HIRIKO H58<sup>PV</sup>

QUARTER-WAY FRANNIE F49<sup>PV</sup>

Mating Type: AI

Mid February 2024 TransTasman Angus Cattle Evaluation											
<div><div>TACE</div><div></div><div>TransTasman Angus Cattle Evaluation</div></div>	Birth Wt.	Milk	200 Wt.	400 Wt.	600 Wt.	Scrotal Size	Carcase Wt.	EMA	Rump Fat	IMF%	
	EBV	+6.8	+14	+56	+98	+125	+4.2	+59	+3.7	-2.9	-0.1
	Acc	89%	75%	86%	86%	88%	86%	77%	75%	76%	78%

Traits Observed: GL,BWT,400WT,600WT,SC,Scan(EMA,Rib,Rump,IMF),Genomics | Statistics: Number of Herds: 2, Prog Analysed: 20, Genomic Prog: 0



RS NAMPARA N244<sup>SV</sup>

HBR

Ident: SFNN244

Born: 9/9/2017

AMFU,CAFU,DDFU,NHFU

THOMAS UP RIVER 1614<sup>PV</sup>NMML133 MILLAH MURRAH LOCH UP L133<sup>PV</sup>MILLAH MURRAH BRENDA H49<sup>SV</sup>RAFF EXPLOSIVE E108<sup>PV</sup>SFNH07 NAMPARA H07<sup>SV</sup>NAMPARA F83<sup>#</sup>

Mating Type: AI

## Mid February 2024 TransTasman Angus Cattle Evaluation

TACE TransTasman Angus Cattle Evaluation	EBV	Birth Wt.	Milk	200 Wt.	400 Wt.	600 Wt.	Scrotal Size	Carcase Wt.	EMA	Rump Fat	IMF%
		+4.3	+21	+51	+86	+101	+2.2	+65	+3.5	-1.5	+2.1
		93%	71%	86%	89%	92%	88%	78%	78%	78%	78%

Traits Observed: BWT,400WT,SC,Scan(EMA,Rib,Rump,IMF) | Statistics: Number of Herds: 1, Prog Analysed: 73, Genomic Prog: 0

RS TEXAS REALITY P224<sup>PV</sup>

HBR

Ident: DXTP224

Born: 30/6/2018

AMF,CAF,DDF,NHF,DWF,MAF,MHF,OHF,OSF,RGF

SCHURRTOP REALITY X723<sup>#</sup>NZE14647008839 MATAURI REALITY 839<sup>#</sup>MATAURI 06663<sup>#</sup>TEXAS TOTAL H625<sup>PV</sup>DXTM363 TEXAS OMNIA M363<sup>SV</sup>TEXAS OMNIA H239<sup>#</sup>

Mating Type: AI

## Mid February 2024 TransTasman Angus Cattle Evaluation

TACE TransTasman Angus Cattle Evaluation	EBV	Birth Wt.	Milk	200 Wt.	400 Wt.	600 Wt.	Scrotal Size	Carcase Wt.	EMA	Rump Fat	IMF%
		+2.3	+11	+46	+85	+113	+3.9	+58	+5.3	+0.4	+1.2
		95%	78%	91%	92%	92%	91%	80%	80%	80%	81%

Traits Observed: GL,BWT,200WT,400WT,600WT,SC,Scan(EMA,Rib,Rump,IMF),DOC,Genomics | Statistics: Number of Herds: 3, Prog Analysed: 181, Genomic Prog: 11

RS MILLAH MURRAH QUIXOTE Q96<sup>PV</sup>

HBR

Ident: NMMQ96

Born: 8/3/2019

AMF,CAF,DDF,NHF,DWF,MAF,MHF,OHF,OSF,RGF

S CHISUM 6175<sup>PV</sup>USA17298481 S CHISUM 255<sup>SV</sup>S BLOSSOM 0278<sup>#</sup>MILLAH MURRAH KLOONEY K42<sup>PV</sup>NMMN8 MILLAH MURRAH BRENDA N8<sup>PV</sup>MILLAH MURRAH BRENDA L73<sup>PV</sup>

Mating Type: AI

## Mid February 2024 TransTasman Angus Cattle Evaluation

TACE TransTasman Angus Cattle Evaluation	EBV	Birth Wt.	Milk	200 Wt.	400 Wt.	600 Wt.	Scrotal Size	Carcase Wt.	EMA	Rump Fat	IMF%
		+3.4	+25	+58	+92	+117	+3.6	+76	+9.6	-3.0	+2.6
		98%	79%	98%	98%	97%	97%	82%	86%	84%	84%

Traits Observed: GL,BWT,200WT,400WT,SC,Scan(EMA,Rib,Rump,IMF),DOC,Genomics | Statistics: Number of Herds: 102, Prog Analysed: 1301, Genomic Prog: 823



RS

PATHFINDER PROPHET Q400<sup>SV</sup>


HBR

Ident: SMPQ400Born: 9/3/2019AMFU,CAFU,DDFU,NHFU

C R A BEXTOR 872 5205 608<sup>#</sup>  
USA16295688 G A R PROPHET<sup>SV</sup>  
G A R OBJECTIVE 1885<sup>#</sup>

TE MANIA AFRICA A217<sup>PV</sup>  
SMPG509 PATHFINDER BOWMAN G509<sup>#</sup>  
PATHFINDER BOWMAN B090<sup>SV</sup>

Mating Type: AI

Mid February 2024 TransTasman Angus Cattle Evaluation											
<div><div>TACE</div><div></div><div>TransTasman Angus Cattle Evaluation</div></div>	Birth Wt.	Milk	200 Wt.	400 Wt.	600 Wt.	Scrotal Size	Carcase Wt.	EMA	Rump Fat	IMF%	
	EBV	+6.5	+15	+70	+112	+139	+2.3	+71	+4.4	-1.6	+3.3
	Acc	93%	77%	87%	88%	88%	86%	78%	76%	77%	79%

Traits Observed: GL,BWT,200WT,400WT,600WT,SC,Scan(EMA,Rib,Rump,IMF),Genomics | Statistics: Number of Herds: 1, Prog Analysed: 87, Genomic Prog: 0

RS

QUARTER-WAY ROSCOE R198<sup>SV</sup>


HBR

Ident: TLHR198Born: 14/8/2020AMFU,CAFU,DDFU,NHFU

MATAURI REALITY 839<sup>#</sup>  
NZE12865015L12 TAIMATE LAZARUS L12<sup>SV</sup>  
TAIMATE 1348<sup>#</sup>

IRELANDS GALAXY G43<sup>SV</sup>  
TLHK16 QUARTER-WAY KATRI K16<sup>#</sup>  
QUARTER-WAY FAYETTE F76<sup>#</sup>

Mating Type: AI

Mid February 2024 TransTasman Angus Cattle Evaluation											
<div><div>TACE</div><div></div><div>TransTasman Angus Cattle Evaluation</div></div>	Birth Wt.	Milk	200 Wt.	400 Wt.	600 Wt.	Scrotal Size	Carcase Wt.	EMA	Rump Fat	IMF%	
	EBV	+1.9	+11	+34	+64	+76	+2.0	+35	+1.7	+6.2	+1.2
	Acc	87%	74%	84%	83%	83%	81%	73%	71%	73%	75%

Traits Observed: GL,BWT,Genomics | Statistics: Number of Herds: 1, Prog Analysed: 11, Genomic Prog: 0

RS

KAHARAU 306<sup>SV</sup>


HBR

Ident: NZE17683017306Born: 30/7/2017AMF,CAF,DDF,NHF,DWF,MAF,MHF,OHF,OSF,RGF

HINGAIA 469<sup>#</sup>  
NMMK35 MILLAH MURRAH KINGDOM K35<sup>PV</sup>  
MILLAH MURRAH FLOWER G41<sup>PV</sup>

KAHARAU ARROW 08-18<sup>#</sup>  
NZE176831129438 KAHARAU 12-9438<sup>#</sup>  
KAHARAU 08-8514<sup>#</sup>

Mating Type: Natural

Mid February 2024 TransTasman Angus Cattle Evaluation											
<div><div>TACE</div><div></div><div>TransTasman Angus Cattle Evaluation</div></div>	Birth Wt.	Milk	200 Wt.	400 Wt.	600 Wt.	Scrotal Size	Carcase Wt.	EMA	Rump Fat	IMF%	
	EBV	+6.3	+16	+46	+91	+124	+1.4	+54	+4.4	+0.3	-0.5
	Acc	94%	81%	92%	92%	93%	90%	81%	80%	81%	81%

Traits Observed: GL,CE,200WT,400WT,600WT,SC,Scan(EMA,Rib,Rump,IMF),Genomics | Statistics: Number of Herds: 1, Prog Analysed: 11, Genomic Prog: 1

## RS KAHARAU CLASS MAN 17-444<sup>#</sup>

HBR

Ident: **NZE17683017444**

Born: **18/8/2017**

**AMFU,CAFU,DDF,NHF,DWF,MAF,MHF,OSF,RGF**

KAHARAU ZODIAC 799<sup>#</sup>

**NZE17683010378 KAHARAU CLASSIC 10-378<sup>#</sup>**


KAHARAU 07-8244<sup>#</sup>

MATAURI REALITY 839<sup>#</sup>

**NZE19944112H601 GOLDWHN JESS H601<sup>#</sup>**

GOLDWYN 05-595<sup>#</sup>

*Mating Type: Natural*

Mid February 2024 TransTasman Angus Cattle Evaluation											
<div><div>TACE</div><div></div><div>TransTasman Angus Cattle Evaluation</div></div>	EBV	Birth Wt.	Milk	200 Wt.	400 Wt.	600 Wt.	Scrotal Size	Carcase Wt.	EMA	Rump Fat	IMF%
		+4.8	+9	+44	+81	+112	+2.1	+45	-3.3	-3.1	+1.8
		96%	80%	94%	94%	94%	92%	81%	81%	81%	81%
Acc											

Traits Observed: CE,200WT,400WT,600WT,SC,Scan(EMA,Rib,Rump,IMF),Genomics | Statistics: Number of Herds: 4, Prog Analysed: 98, Genomic Prog: 5

## RS QUARTER-WAY QUAD Q11<sup>PV</sup>

HBR

Ident: **TLHQ11**

Born: **4/4/2019**

**AMFU,CAFU,DDFU,NHFU**

R B TOUR OF DUTY 177<sup>PV</sup>

**NBNM97 BEN NEVIS MYSTIC M97<sup>SV</sup>**

BEN NEVIS GERANIUM H6<sup>#</sup>

BANQUET ABERDEEN A349<sup>SV</sup>

**TLHF49 QUARTER-WAY FRANNIE F49<sup>PV</sup>**

QUARTER-WAY FRAM C1<sup>E</sup>

*Mating Type: Natural*

Mid February 2024 TransTasman Angus Cattle Evaluation											
<div><div>TACE</div><div></div><div>TransTasman Angus Cattle Evaluation</div></div>	EBV	Birth Wt.	Milk	200 Wt.	400 Wt.	600 Wt.	Scrotal Size	Carcase Wt.	EMA	Rump Fat	IMF%
		+5.3	+10	+39	+71	+82	+2.3	+48	+9.7	-1.1	+1.0
		88%	69%	84%	85%	85%	83%	73%	70%	72%	73%

Traits Observed: BWT,SC,Scan(Rib,Rump,IMF),Genomics | Statistics: Number of Herds: 1, Prog Analysed: 19, Genomic Prog: 0

## RS QUARTER-WAY OPTIONAL N164<sup>SV</sup>

HBR

Ident: **TLHN164**

Born: **10/8/2017**

**AMFU,CAFU,DDFU,NHFU**

MERCHISTON EXCLUSIVE 269<sup>#</sup>

**NZE14738014489 MERCHISTON STEAKHOUSE 489<sup>#</sup>**


MERCHISTON RANGI 684<sup>#</sup>

BANQUET FRONTIER F791<sup>SV</sup>

**TLHJ29 QUARTER-WAY JANICE J29<sup>#</sup>**

QUARTER-WAY ELISE E65<sup>#</sup>

*Mating Type: AI*

Mid February 2024 TransTasman Angus Cattle Evaluation											
<div><div>TACE</div><div></div><div>TransTasman Angus Cattle Evaluation</div></div>		Birth Wt.	Milk	200 Wt.	400 Wt.	600 Wt.	Scrotal Size	Carcase Wt.	EMA	Rump Fat	IMF%
	EBV	+6.4	+15	+50	+89	+124	+2.9	+63	+0.7	-4.2	-0.6
	Acc	91%	61%	82%	86%	87%	82%	72%	69%	70%	69%

Traits Observed: GL,BWT,600WT,SC,Scan(EMA,Rib,Rump,IMF) | Statistics: Number of Herds: 1, Prog Analysed: 55, Genomic Prog: 0



RS

BEN NEVIS MYSTIC M97<sup>SV</sup>


HBR

Ident: NBNM97Born: 3/8/2016AMFU,CAFU,DDFU,NHFU

WERNER WAR PARTY 2417#  
USA16984170 R B TOUR OF DUTY 177<sup>PV</sup>  
B A LADY 6807 305#

J & C EVIDENCE E11<sup>SV</sup>  
NBNH6 BEN NEVIS GERANIUM H6#  
BEN NEVIS GERANIUM V29#

Mating Type: AI

Mid February 2024 TransTasman Angus Cattle Evaluation											
		Birth Wt.	Milk	200 Wt.	400 Wt.	600 Wt.	Scrotal Size	Carcase Wt.	EMA	Rump Fat	IMF%
	EBV	+5.9	+15	+51	+95	+124	+1.0	+84	+8.3	-1.4	-0.1
	Acc	95%	68%	86%	90%	92%	91%	77%	77%	77%	77%
Traits Observed: BWT,400WT(x2),SC,Scan(EMA,Rib,Rump,IMF)   Statistics: Number of Herds: 1, Prog Analysed: 115, Genomic Prog: 2											

RS

QUARTER-WAY PALMER P16<sup>SV</sup>


HBR

Ident: TLHP16Born: 15/4/2018AMFU,CAFU,DDFU,NHFU

MERCHISTON EXCLUSIVE 269#  
NZE14738014489 MERCHISTON STEAKHOUSE 489#  
MERCHISTON RANGI 684#

VERMONT UNLIMITED Z91<sup>SV</sup>  
TLHE41 QUARTER-WAY EGBERTA E41#  
QUARTER-WAY LAURA B64#

Mating Type: AI

Mid February 2024 TransTasman Angus Cattle Evaluation											
<div><div>TACE</div><div></div><div>TransTasman Angus Cattle Evaluation</div></div>		Birth Wt.	Milk	200 Wt.	400 Wt.	600 Wt.	Scrotal Size	Carcase Wt.	EMA	Rump Fat	IMF%
	EBV	+6.2	+12	+50	+87	+115	+1.6	+62	-3.8	+3.7	+0.8
	Acc	88%	72%	84%	84%	84%	80%	73%	70%	71%	73%
Traits Observed: GL,BWT,400WT,600WT,SC,Scan(EMA,Rib,Rump,IMF),Genomics   Statistics: Number of Herds: 1, Prog Analysed: 18, Genomic Prog: 0											

RS

QUARTER-WAY RAFFERTY R9<sup>SV</sup>


HBR

Ident: TLHR9Born: 17/4/2020AMFU,CAFU,DDFU,NHFU

PEAKES GABBA K556<sup>SV</sup>  
TLHN187 QUARTER-WAY NO NONSENCE N187<sup>SV</sup>  
QUARTER-WAY ENRICA E105#

QUARTER-WAY KINGSIZE K156<sup>SV</sup>  
TLHN107 QUARTER-WAY NORDIC N107#  
QUARTER-WAY LINDA L71#

Mating Type: Natural

Mid February 2024 TransTasman Angus Cattle Evaluation											
		Birth Wt.	Milk	200 Wt.	400 Wt.	600 Wt.	Scrotal Size	Carcase Wt.	EMA	Rump Fat	IMF%
	EBV	+5.7	+12	+33	+74	+95	+0.8	+49	-2.8	+2.9	+1.6
	Acc	86%	66%	82%	80%	81%	77%	68%	65%	67%	70%
Traits Observed: BWT,Genomics   Statistics: Number of Herds: 1, Prog Analysed: 13, Genomic Prog: 0											

RS

QUARTER-WAY RANSOM R50<sup>SV</sup>


HBR

Ident: TLHR50Born: 10/6/2020AMFU,CAFU,DDFU,NHFU

BRAVEHEART OF STERN<sup>SV</sup>  
BKCL5 KIDMAN EXECUTIVE L5<sup>SV</sup>  
KIDMAN THELMA F104<sup>#</sup>

BANQUET JESTER J687<sup>PV</sup>  
TLHM147 QUARTER-WAY MADONNA M147<sup>#</sup>  
QUARTER-WAY VESPER Y32<sup>#</sup>

Mating Type: AI

Mid February 2024 TransTasman Angus Cattle Evaluation											
	EBV Acc	Birth Wt.	Milk	200 Wt.	400 Wt.	600 Wt.	Scrotal Size	Carcase Wt.	EMA	Rump Fat	IMF%
		+4.0	+7	+33	+66	+92	+1.8	+55	+2.1	-0.2	+1.8
		87%	70%	83%	81%	83%	80%	70%	67%	69%	72%
Traits Observed: GL,BWT,Genomics   Statistics: Number of Herds: 1, Prog Analysed: 17, Genomic Prog: 0											





Quarterway Angus Bull Sale

Animal Ident		Calving Ease			Growth				Fertility				Carcass				Feed		Temp.	Structural		Selection Indexes				
		CEDir	CEDtrs	GL	BWT	200	400	600	MCW	Milk	SS	DTC	CWT	EMA	RIB	P8	RBV	IMF		NFI-F	Doc	Claw	Angle	Leg	SA	SA-L
1	TLH22T205	-0.4	+1.6	-3.4	+5.1	+51	+95	+134	+126	+18	+3.1	-2.6	+70	+3.2	-0.1	+0.9	+0.3	+1.0	0.19	+17	-	-	-	-	\$153	\$302
2	TLH22T237	-1.9	-0.4	-0.6	+5.2	+49	+95	+128	+126	+17	+2.9	-3.1	+72	+5.1	-0.7	+0.4	+0.8	+0.7	0.15	+18	-	-	-	-	\$153	\$299
3	TLH22T73	-0.5	+4.1	-1.7	+5.4	+48	+87	+107	+91	+12	+1.2	-3.4	+64	+9.0	+0.1	+0.2	+1.4	+0.6	-0.08	+17	-	-	-	-	\$191	\$318
4	TLH22T278	-11.0	-10.6	-3.1	+7.5	+57	+105	+138	+150	+13	+3.0	-4.1	+72	+1.7	-2.9	-4.1	+1.0	+0.3	-0.36	+18	-	-	-	-	\$116	\$249
5	TLH22T102	-5.3	-2.1	-3.3	+5.6	+51	+87	+105	+101	+17	+2.5	-3.6	+59	+3.7	+0.6	-0.2	-0.2	+1.5	-0.15	+26	-	-	-	-	\$139	\$255
6	TLH22T154	+0.6	+0.7	-4.9	+4.9	+43	+80	+112	+110	+13	+2.8	-2.9	+55	+5.1	-0.1	+0.4	+1.1	+0.3	0.14	+19	-	-	-	-	\$139	\$273
7	TLH22T39	+8.2	+6.5	-7.4	+3.5	+44	+84	+106	+93	+15	+2.2	-3.2	+57	+3.8	+1.1	+0.6	+0.4	+1.3	-0.1	+22	-	-	-	-	\$171	\$316
8	TLH22T235	-1.8	+4.9	-0.3	+4.9	+57	+103	+127	+99	+23	+3.8	-4.7	+77	+9.5	-1.9	-3.3	+1.6	+1.1	0.27	+18	-	-	-	-	\$223	\$365
9	TLH22T399	-0.3	+2.3	-1.3	+5.3	+52	+95	+121	+103	+16	+1.8	-3.5	+74	+4.5	-1.0	-0.4	+0.3	+2.0	0.06	+11	-	-	-	-	\$186	\$324
10	TLH22T341	-0.3	-1.4	-4.3	+5.9	+56	+95	+121	+114	+15	+1.3	-3.8	+63	+3.0	-2.4	-2.5	+0.3	+1.6	0.05	+18	-	-	-	-	\$171	\$310
11	TLH22T231	+5.7	+2.7	-1.5	+3.0	+42	+79	+101	+94	+12	+2.5	-4.4	+54	+2.0	+2.5	+2.7	-0.2	+2.2	0.28	+17	-	-	-	-	\$168	\$311
12	TLH22T108	-0.9	-1.7	-4.0	+5.0	+50	+86	+110	+109	+17	+2.3	-2.6	+63	+0.4	-0.6	-1.3	-0.6	+2.5	-0.11	+18	-	-	-	-	\$129	\$255
13	TLH22T207	+0.5	+2.3	-2.3	+3.8	+50	+87	+109	+94	+18	+3.4	-5.3	+64	+0.2	+0.2	-0.4	+0.0	+1.5	0.34	+14	-	-	-	-	\$172	\$307
14	TLH22T125	-0.2	+0.9	-3.4	+5.0	+45	+77	+96	+83	+16	+1.9	-2.8	+55	+4.6	+0.0	-0.9	+0.2	+1.8	-0.07	+26	-	-	-	-	\$147	\$257
15	TLH22T358	+1.8	+0.9	-5.7	+5.4	+47	+91	+116	+105	+15	+1.8	-3.3	+63	+3.9	+0.1	+0.4	+0.7	+0.2	0.15	+18	-	-	-	-	\$160	\$299
16	TLH22T43	+7.7	+4.2	-6.2	+3.7	+41	+78	+103	+100	+12	+3.1	-3.3	+52	+3.5	+0.7	+0.5	+0.7	+0.7	0.08	+15	-	-	-	-	\$148	\$293
17	TLH22T77	+6.5	+2.1	-4.2	+3.8	+45	+82	+108	+100	+11	+3.1	-4.3	+56	+2.4	+1.0	+0.8	+0.3	+1.2	0.07	+16	-	-	-	-	\$164	\$312
18	TLH22T2	-6.3	-3.7	-5.2	+7.0	+46	+84	+112	+115	+14	+2.0	-5.0	+43	+4.9	-1.6	-3.1	+1.3	+0.4	-0.16	+27	-	-	-	-	\$133	\$255
19	TLH22T24	-7.9	-1.1	+0.1	+7.9	+53	+95	+124	+115	+12	+1.0	-3.0	+74	+7.5	-1.8	-2.4	+1.2	+1.6	-0.12	+17	-	-	-	-	\$166	\$285
20	TLH22T13	-5.7	-1.9	-0.8	+6.1	+53	+86	+108	+102	+11	+1.6	-4.1	+53	+3.0	-1.0	-0.7	+0.0	+2.6	0.2	+13	-	-	-	-	\$162	\$279
21	TLH22T68	+0.8	+0.3	-4.6	+4.1	+40	+74	+97	+94	+13	+2.4	-2.7	+44	-0.8	-0.5	-1.6	+0.1	+1.6	0.23	+27	-	-	-	-	\$110	\$227
22	TLH22T300	-10.2	-10.4	-3.4	+7.4	+56	+101	+132	+142	+12	+4.3	-5.4	+68	+2.4	-1.5	-2.4	+0.8	+0.5	0.05	+20	-	-	-	-	\$131	\$266
23	TLH22T262	-4.1	-1.7	-4.7	+5.7	+46	+86	+107	+100	+13	+3.7	-4.9	+60	+3.8	+1.3	+1.7	+0.0	+1.3	0.39	+27	-	-	-	-	\$151	\$277
24	TLH22T210	-1.8	-1.1	-3.9	+6.1	+47	+89	+124	+130	+13	+1.8	-2.5	+64	+3.1	-0.3	+0.5	+0.5	+1.2	-0.2	+16	-	-	-	-	\$133	\$275
25	TLH22T259	-3.8	-2.0	-4.5	+5.7	+45	+80	+104	+101	+15	+1.8	-3.5	+55	+4.0	-1.2	-2.6	+1.1	+0.7	-0.05	+23	-	-	-	-	\$131	\$245
26	TLH22T349	-4.5	+1.5	-3.8	+6.6	+45	+84	+109	+107	+14	+0.8	-2.7	+66	+6.0	-3.0	-2.6	+1.4	+0.7	-0.14	+21	-	-	-	-	\$137	\$255
27	TLH22T104	-1.2	+0.1	-3.5	+6.4	+53	+94	+117	+109	+17	+3.1	-2.7	+68	+3.8	-1.9	-3.0	+0.8	+0.6	-0.24	+26	-	-	-	-	\$150	\$282
28	TLH22T40	+3.3	+3.8	-7.8	+5.2	+43	+81	+106	+106	+15	+1.5	-2.0	+52	-2.5	-2.2	-3.8	-0.1	+2.2	-0.19	+31	-	-	-	-	\$112	\$244
29	TLH22T242	-4.2	-0.3	-3.7	+5.5	+40	+76	+89	+86	+14	+2.6	-3.4	+51	+4.4	-0.8	-0.8	+1.0	+0.5	0.12	+20	-	-	-	-	\$123	\$227
30	TLH22T329	-4.5	-2.0	-3.5	+7.0	+51	+98	+126	+126	+18	+3.7	-3.4	+67	+2.0	-3.2	-4.0	+1.2	-0.1	-0.15	+29	-	-	-	-	\$128	\$264
31	TLH22T145	+7.7	+4.1	-5.5	+3.1	+43	+82	+107	+97	+11	+2.2	-3.7	+59	+2.1	+1.9	+1.5	+0.0	+1.9	0.22	+18	-	-	-	-	\$166	\$313
32	TLH22T303	-8.8	-10.9	-3.7	+6.2	+49	+89	+106	+118	+13	+1.9	-4.4	+57	+3.3	-0.7	-1.7	+0.9	+0.0	0.07	+12	-	-	-	-	\$113	\$225
33	TLH22T236	-1.3	-1.3	-2.6	+6.0	+60	+99	+130	+116	+13	+3.0	-4.4	+66	+4.1	-0.9	-1.2	-0.4	+3.2	0.14	+27	-	-	-	-	\$195	\$340
34	TLH22T268	-2.8	+1.6	-2.6	+6.5	+54	+101	+133	+128	+17	+2.7	-2.6	+83	+5.8	-3.9	-4.2	+1.7	+0.3	-0.1	+17	-	-	-	-	\$160	\$304
35	TLH22T374	-0.1	+2.2	-2.4	+5.0	+45	+82	+106	+89	+12	+2.2	-3.2	+64	+6.6	-0.1	+0.3	+0.9	+1.0	-0.08	+19	-	-	-	-	\$168	\$291
36	TLH22T227	-0.9	+1.4	-4.7	+4.4	+39	+75	+91	+87	+15	+3.3	-3.3	+49	+6.8	-1.6	-2.2	+1.4	+0.9	0.3	+33	-	-	-	-	\$138	\$253

TACE  Translational Angus Cattle Evaluation

CEDir	CEDtrs	GL	BWT	200	400	600	MCW	Milk	SS	DTC	CWT	EMA	RIB	P8	RBV	IMF	NFI-F	Doc	Claw	Angle	Leg	SA	SA-L
+1.8	+2.8	-4.4	+4.0	+51	+92	+118	+101	+17	+2.2	-4.6	+67	+6.6	+0.0	-0.3	+0.5	+2.3	+0.23	+21	+0.85	+0.97	+1.03	+202	+345



Quarterway Angus Bull Sale

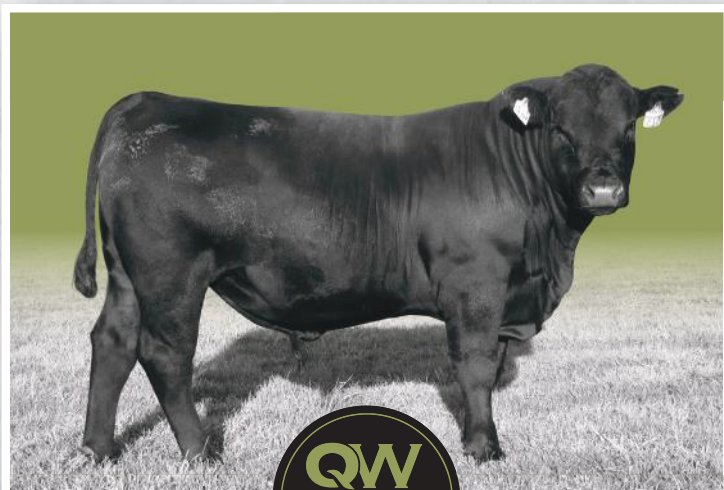
Animal Ident		Calving Ease			Growth			Fertility			Carcase			Feed		Temp.	Structural		Selection Indexes							
		CEDir	CEDtrs	GL	BWT	200	400	600	MCW	Milk	SS	DTC	CWT	EMA	RIB	P8	RBV	IMF	NFI-F	Doc	Claw	Angle	Leg	\$A	\$A-L	
37	TLH22T107	-11.5	-4.0	-2.4	+6.9	+40	+73	+83	+86	+11	+1.1	-4.0	+48	+4.1	-0.2	-0.1	+0.7	+1.0	0.01	+21	-	-	-	-	\$105	\$187
38	TLH22T408	-1.6	-1.7	-4.1	+6.1	+58	+100	+125	+120	+15	+1.5	-4.2	+68	+0.4	-1.9	-1.9	+0.0	+1.6	-0.11	+25	-	-	-	-	\$170	\$313
39	TLH22T115	-6.3	-1.8	-0.2	+6.8	+54	+95	+126	+118	+11	+1.3	-3.0	+74	+6.9	-1.9	-2.1	+1.3	+1.1	-0.13	+12	-	-	-	-	\$167	\$292
40	TLH22T121	+1.5	+3.1	-2.4	+5.1	+46	+80	+109	+93	+11	+1.8	-3.0	+59	+9.1	-0.3	-0.9	+1.1	+1.7	0.09	+10	-	-	-	-	\$180	\$307
41	TLH22T46	+2.6	+0.9	-6.5	+4.0	+41	+78	+108	+111	+16	+2.5	-3.8	+54	-0.5	+0.2	+0.5	+0.3	+0.4	-0.01	+21	-	-	-	-	\$119	\$258
42	TLH22T70	+7.0	+4.8	-4.0	+3.9	+42	+79	+106	+101	+12	+2.9	-2.1	+54	+1.8	+0.2	-0.5	+0.4	+1.3	-0.12	+15	-	-	-	-	\$136	\$278
43	TLH22T54	+4.4	+1.4	-5.5	+3.8	+36	+66	+97	+102	+12	+1.0	-2.1	+43	-4.3	+1.5	+1.6	-0.9	+2.0	0.11	+25	-	-	-	-	\$87	\$212
44	TLH22T67	+1.0	+1.0	-3.4	+4.7	+43	+84	+111	+109	+15	+3.7	-3.6	+54	+1.9	-1.1	-0.6	+0.6	+0.5	0.01	+20	-	-	-	-	\$131	\$269
45	TLH22T292	-2.0	+2.8	-4.6	+6.0	+48	+87	+111	+103	+13	+2.0	-3.2	+67	+8.1	-1.5	-0.7	+1.4	+0.4	0.1	+23	-	-	-	-	\$167	\$296
46	TLH22T435	-1.5	-1.8	-5.7	+5.1	+49	+89	+120	+117	+16	+3.3	-3.9	+62	+0.6	-1.6	-1.9	+0.4	+0.9	0.09	+20	-	-	-	-	\$135	\$272
47	TLH22T367	-3.7	-1.5	-5.3	+5.1	+44	+80	+107	+108	+13	+1.9	-4.6	+54	-2.2	+1.8	+1.8	-0.2	+0.8	0.33	+19	-	-	-	-	\$121	\$245
48	TLH22T126	-6.5	-3.5	-3.7	+5.7	+39	+69	+84	+81	+11	+2.3	-4.3	+45	+6.4	-0.4	-0.5	+1.0	+1.2	0.3	+27	-	-	-	-	\$128	\$221
49	TLH22T240	-1.5	-1.1	-2.2	+5.6	+50	+86	+112	+110	+16	+2.2	-2.0	+68	+0.3	-1.6	-2.7	-0.1	+2.3	-0.19	+23	-	-	-	-	\$125	\$248
50	TLH22T454	-4.1	-1.4	-2.0	+6.6	+61	+105	+129	+112	+16	+3.4	-4.3	+66	+3.7	-1.3	-1.3	+0.1	+1.9	-0.03	+25	-	-	-	-	\$192	\$330
51	TLH22T412	-2.8	-0.9	-2.0	+6.2	+44	+89	+118	+113	+15	+1.8	-1.5	+62	+0.4	-0.8	-0.1	+0.5	+0.5	0.06	+21	-	-	-	-	\$112	\$235
52	TLH22T334	-4.8	-0.3	-3.2	+6.6	+49	+88	+115	+110	+13	+2.1	-3.8	+61	+1.4	-0.2	-0.3	+0.8	+0.1	0.07	+24	-	-	-	-	\$139	\$263
53	TLH22T316	-0.8	+0.2	-4.7	+4.6	+42	+80	+91	+85	+15	+2.1	-4.2	+51	+6.7	-2.6	-3.1	+1.6	+0.6	0	+20	-	-	-	-	\$156	\$273
54	TLH22T141	+2.9	+4.3	-6.1	+4.6	+50	+91	+124	+118	+16	+3.5	-3.1	+66	+3.0	-0.6	+0.3	+0.4	+0.8	0.01	+19	-	-	-	-	\$159	\$312
55	TLH22T249	-1.5	-2.6	-3.5	+5.5	+41	+78	+111	+113	+9	+1.6	-2.3	+62	+3.8	+0.1	+0.0	+0.7	+1.6	-0.03	+18	-	-	-	-	\$124	\$248
56	TLH22T57	-2.7	+0.2	-1.6	+5.2	+50	+84	+100	+93	+13	+2.7	-4.3	+47	+3.3	-1.0	-0.6	+0.4	+1.6	0.08	+21	-	-	-	-	\$163	\$284
57	TLH22T327	-0.4	-0.5	-2.0	+4.4	+52	+90	+112	+94	+15	+2.8	-3.6	+56	+6.3	-2.0	-1.7	+1.0	+1.4	0.28	+26	-	-	-	-	\$185	\$312
58	TLH22T76	+5.9	+3.6	-3.0	+3.4	+39	+72	+93	+86	+12	+2.4	-3.1	+49	+5.1	+0.3	-0.6	+1.1	+1.0	0.15	+17	-	-	-	-	\$151	\$280
59	TLH22T128	+1.4	-0.2	-6.5	+6.9	+50	+91	+125	+123	+15	+1.8	-3.1	+53	+2.2	-0.2	+0.3	-0.1	+0.0	-0.13	+26	-	-	-	-	\$132	\$277
60	TLH22T188	+3.1	+1.3	-5.2	+4.0	+37	+69	+103	+104	+14	+1.9	-3.1	+52	-1.3	+2.0	+3.3	-0.4	+1.5	0.07	+18	-	-	-	-	\$113	\$244
61	TLH22T470	-0.8	+0.1	-4.1	+5.0	+40	+75	+104	+106	+14	+1.7	-3.0	+53	-1.2	+1.7	+2.7	-0.4	+1.5	0.09	+20	-	-	-	-	\$112	\$237



TERWAY

ANGUS

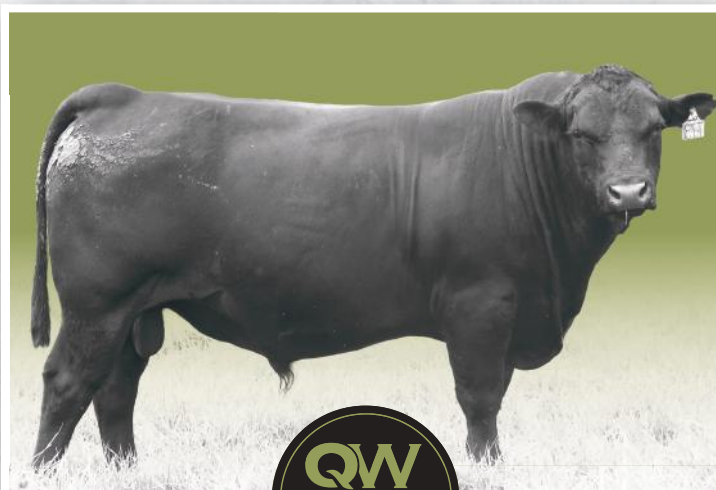




**QUARTER-WAY Tour Leader T237**

LOT 2

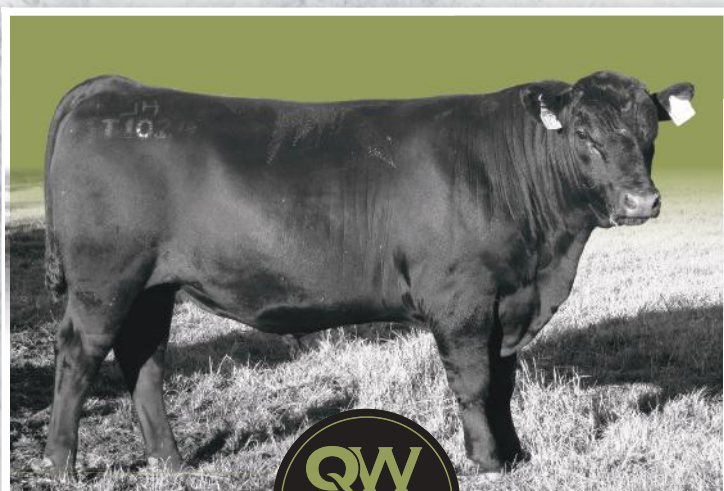
Tour Leader boasts great width over the top. Lots of meat, coupled with structure and great feet. Ragnar promotes good weight gain. Mod BW. Beautiful temperament.



**QUARTER-WAY Thunderbolt T73**

LOT 3

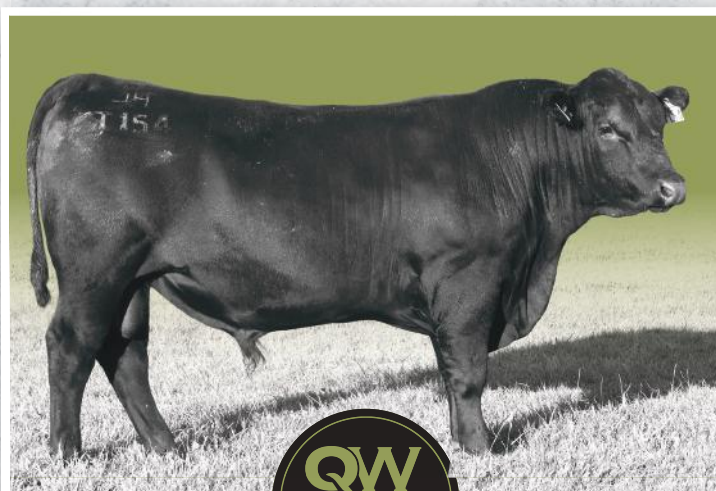
Thunderbolt is a Junior son from a fantastic female pedigree. On of the heavier bulls in the draft promoting great weight for age. The young lad is all meat.



**QUARTER-WAY Thredbo T102**

LOT 5

Strong pedigree for a strong young bull. Thredbo is a moderately framed bull with great muscularity and structure. An easy doing bull.



**QUARTER-WAY Time is Right T154**

LOT 6

The Ragnar boys are like peas in a pod. Time is Right is a top young bull with a lot of muscle. Low BW. Exceptional temperament

QW  
QUARTERWAY  
ANGUS

1 QUARTER-WAY TAWNY PORT T205<sup>#</sup>

HBR

Ident: TLH22T205

Born: 17/7/2022

AMFU,CAFU,DDFU,NHFU

TURIROA COMPLETE 16M013<sup>#</sup>NZE15603018P224 TURIROA RAGNAR 18P224<sup>#</sup>TURIROA L090<sup>#</sup>WATTLETOP MOONSHINE M42<sup>SV</sup>TLHQ143 QUARTER-WAY QUICK JOB Q143<sup>#</sup>QUARTER-WAY JOSALYN J130<sup>#</sup>

Tawny Port is well deserved to be lot 1 in the catalogue. Great spread of data. Everything about this bull oozes quality. Meat. Strength. Length, depth and width.

Pen No: 1

Mating Type: AI

Purchaser:.....

\$.....

## Mid February 2024 TransTasman Angus Cattle Evaluation

TACE TransTasman Angus Cattle Evaluation	EBV	Birth Wt.	Milk	200 Wt.	400 Wt.	600 Wt.	Scrotal Size	Carcase Wt.	EMA	Rump Fat	IMF%
		+5.1	+18	+51	+95	+134	+3.1	+70	+3.2	+0.9	+1.0
		74%	55%	69%	71%	74%	74%	60%	57%	59%	60%

Traits Observed: GL,BWT,400WT,600WT,SC,Scan(EMA,Rib,Rump,IMF) Number of Herds: 0, Prog Analysed: 0, Genomic Prog: 0

2 QUARTER-WAY TOUR LEADER T237<sup>#</sup>

HBR

Ident: TLH22T237

Born: 23/7/2022

AMFU,CAFU,DDFU,NHFU

TURIROA COMPLETE 16M013<sup>#</sup>NZE15603018P224 TURIROA RAGNAR 18P224<sup>#</sup>TURIROA L090<sup>#</sup>BEN NEVIS MYSTIC M97<sup>SV</sup>TLHQ71 QUARTER-WAY QUEANBEYAN Q71<sup>#</sup>QUARTER-WAY FELISE F84<sup>#</sup>

Tour Leader boasts great width over the top. Lots of meat, coupled with structure and great feet. Ragnar promotes good weight gain. Mod BW. Beautiful temperament.

Pen No: 1

Mating Type: AI

Purchaser:.....

\$.....

## Mid February 2024 TransTasman Angus Cattle Evaluation

TACE TransTasman Angus Cattle Evaluation	EBV	Birth Wt.	Milk	200 Wt.	400 Wt.	600 Wt.	Scrotal Size	Carcase Wt.	EMA	Rump Fat	IMF%
		+5.2	+17	+49	+95	+128	+2.9	+72	+5.1	+0.4	+0.7
		74%	52%	69%	72%	74%	74%	60%	55%	57%	57%

Traits Observed: GL,BWT,400WT,600WT,SC,Scan(EMA,Rib,Rump,IMF) Number of Herds: 0, Prog Analysed: 0, Genomic Prog: 0

3 QUARTER-WAY THUNDERBOLT T73<sup>#</sup>

HBR

Ident: TLH22T73

Born: 2/6/2022

AMFU,CAFU,DDFU,NHFU

COONAMBLE JUNIOR J266<sup>PV</sup>SFNQ148 NAMPARA JUNIOR Q148<sup>SV</sup>NAMPARA M112<sup>#</sup>MERCHISTON GENERATE 243<sup>#</sup>TLHL53 QUARTER-WAY LIBBY L53<sup>#</sup>QUARTER-WAY AME C37<sup>SV</sup>

Thunderbolt is a Junior son from a fantastic female pedigree. On of the heavier bulls in the draft promoting great weight for age. The young lad is all meat.

Pen No: 1

Mating Type: Natural

Purchaser:.....

\$.....

## Mid February 2024 TransTasman Angus Cattle Evaluation

TACE TransTasman Angus Cattle Evaluation	EBV	Birth Wt.	Milk	200 Wt.	400 Wt.	600 Wt.	Scrotal Size	Carcase Wt.	EMA	Rump Fat	IMF%
		+5.4	+12	+48	+87	+107	+1.2	+64	+9.0	+0.2	+0.6
		74%	58%	69%	71%	74%	73%	60%	57%	59%	61%

Traits Observed: BWT,400WT,600WT,SC,Scan(EMA,Rib,Rump,IMF) Number of Herds: 0, Prog Analysed: 0, Genomic Prog: 0



4 QUARTER-WAY TABBY T278<sup>#</sup>

HBR

Ident: TLH22T278

Born: 5/8/2022

AMFU,CAFU,DDFU,NH3%

MERCHISTON STEAKHOUSE 489<sup>#</sup>TLHP124 QUARTER-WAY PRINCETON P124<sup>PV</sup>QUARTER-WAY HIRIKO H58<sup>PV</sup>BOONAROO JOIN J196<sup>SV</sup>TLHN160 QUARTER-WAY NEW LIFE N160<sup>#</sup>QUARTER-WAY HENRIETTA H42<sup>#</sup>


What a bull! From Steakhouse, to Princeton and to Tabby. An absolute meat machine. Tabby is a big, strong, structurally correct bull. Steakhouse prompts thickness with perfect structure.

Pen No: 1

Mating Type: **Natural**

Purchaser:.....

\$.....

Mid February 2024 TransTasman Angus Cattle Evaluation											
		Birth Wt.	Milk	200 Wt.	400 Wt.	600 Wt.	Scrotal Size	Carcase Wt.	EMA	Rump Fat	IMF%
	EBV	+7.5	+13	+57	+105	+138	+3.0	+72	+1.7	-4.1	+0.3
	Acc	74%	52%	67%	70%	73%	73%	59%	52%	55%	56%

Traits Observed: BWT,400WT,600WT,SC,Scan(EMA,Rib,Rump,IMF) Number of Herds: 0, Prog Analysed: 0, Genomic Prog: 0

5 QUARTER-WAY THREDBO T102<sup>#</sup>

HBR

Ident: TLH22T102

Born: 2/7/2022

AMFU,CAFU,DDFU,NHFU

MILLAH MURRAH LOCH UP L133<sup>PV</sup>SFNN244 NAMPARA N244<sup>SV</sup>NAMPARA H07<sup>SV</sup>BANQUET ABODE A005<sup>PV</sup>TLHH89 QUARTER-WAY HAPPY H89<sup>#</sup>QUARTER-WAY BETTA A65<sup>#</sup>


Strong pedigree for a strong young bull. Thredbo is a moderately framed bull with great muscularity and structure. An easy doing bull.

Pen No: 1

Mating Type: **Natural**

Purchaser:.....

\$.....

Mid February 2024 TransTasman Angus Cattle Evaluation											
<div><div>TACE</div><div></div><div>TransTasman Angus Cattle Evaluation</div></div>		Birth Wt.	Milk	200 Wt.	400 Wt.	600 Wt.	Scrotal Size	Carcase Wt.	EMA	Rump Fat	IMF%
	EBV	+5.6	+17	+51	+87	+105	+2.5	+59	+3.7	-0.2	+1.5
	Acc	74%	52%	68%	70%	74%	73%	60%	54%	57%	57%

Traits Observed: BWT,400WT,600WT,SC,Scan(EMA,Rib,Rump,IMF) Number of Herds: 0, Prog Analysed: 0, Genomic Prog: 0

6 QUARTER-WAY TIME IS RIGHT T154<sup>#</sup>

HBR

Ident: TLH22T154

Born: 12/7/2022

AMFU,CAFU,DDFU,NHFU

TURIROA COMPLETE 16M013<sup>#</sup>NZE15603018P224 TURIROA RAGNAR 18P224<sup>#</sup>TURIROA L090<sup>#</sup>BANQUET ABERDEEN A349<sup>SV</sup>TLHG96 QUARTER-WAY GEORGENE G96<sup>#</sup>QUARTER-WAY VES Z39<sup>#</sup>


The Ragnar boys are like peas in a pod. Time is Right is a top young bull with a lot of muscle. Low BW. Exceptional temperament.

Pen No: 1

Mating Type: **AI**

Purchaser:.....

\$.....

Mid February 2024 TransTasman Angus Cattle Evaluation											
	Birth Wt.	Milk	200 Wt.	400 Wt.	600 Wt.	Scrotal Size	Carcase Wt.	EMA	Rump Fat	IMF%	
	EBV	+4.9	+13	+43	+80	+112	+2.8	+55	+5.1	+0.4	+0.3
	Acc	76%	54%	71%	73%	76%	75%	62%	57%	59%	58%

Traits Observed: GL,BWT,400WT,600WT,SC,Scan(EMA,Rib,Rump,IMF) Number of Herds: 0, Prog Analysed: 0, Genomic Prog: 0

7 QUARTER-WAY TURK T39<sup>#</sup>

HBR

Ident: TLH22T39

Born: 26/5/2022

AMFU,CAFU,DDFU,NHFU

MATAURI REALITY 839<sup>#</sup>DXTP224 TEXAS REALITY P224<sup>PV</sup>TEXAS OMNIA M363<sup>SV</sup>MERCHISTON GENERATE 243<sup>#</sup>TLHL80 QUARTER-WAY LIZETTE L80<sup>#</sup>QUARTER-WAY HANNAH H15<sup>#</sup>

Turk is a classic Reality son from a Generate daughter. One of the heavier bulls in the draft, Turk is strong meaty bull with low BW.

Pen No: 1

Mating Type: AI

Purchaser:.....

\$.....

## Mid February 2024 TransTasman Angus Cattle Evaluation

TACE TransTasman Angus Cattle Evaluation	EBV	Birth Wt.	Milk	200 Wt.	400 Wt.	600 Wt.	Scrotal Size	Carcase Wt.	EMA	Rump Fat	IMF%
		+3.5	+15	+44	+84	+106	+2.2	+57	+3.8	+0.6	+1.3
		75%	57%	69%	71%	74%	74%	61%	57%	59%	61%

Traits Observed: GL,BWT,400WT,600WT,SC,Scan(EMA,Rib,Rump,IMF) Number of Herds: 0, Prog Analysed: 0, Genomic Prog: 0

8 QUARTER-WAY TASKBAR T235<sup>#</sup>

HBR

Ident: TLH22T235

Born: 23/7/2022

AMFU,CAFU,DDFU,NHFU

S CHISUM 255<sup>SV</sup>NMMQ96 MILLAH MURRAH QUIXOTE Q96<sup>PV</sup>MILLAH MURRAH BRENDA N8<sup>PV</sup>QUARTER-WAY MACGILL M168<sup>SV</sup>TLHQ172 QUARTER-WAY IDEOLOGY Q172<sup>#</sup>QUARTER-WAY LINDA L71<sup>#</sup>

Taskbar is a stunning young bull. We are very impressed with the Quixote progeny. The all portray length, depth and width. Well set up in the scrotal department.

Pen No: 2

Mating Type: AI

Purchaser:.....

\$.....

## Mid February 2024 TransTasman Angus Cattle Evaluation

TACE TransTasman Angus Cattle Evaluation	EBV	Birth Wt.	Milk	200 Wt.	400 Wt.	600 Wt.	Scrotal Size	Carcase Wt.	EMA	Rump Fat	IMF%
		+4.9	+23	+57	+103	+127	+3.8	+77	+9.5	-3.3	+1.1
		74%	54%	69%	72%	74%	74%	60%	56%	57%	59%

Traits Observed: GL,BWT,400WT,600WT,SC,Scan(EMA,Rib,Rump,IMF) Number of Herds: 0, Prog Analysed: 0, Genomic Prog: 0

9 QUARTER-WAY TREVOR T399<sup>#</sup>

HBR

Ident: TLH22T399

Born: 12/9/2022

AMFU,CAFU,DDFU,NHFU

COONAMBLE JUNIOR J266<sup>PV</sup>SFNQ148 NAMPARA JUNIOR Q148<sup>SV</sup>NAMPARA M112<sup>#</sup>WATTLETOP MOONSHINE M42<sup>SV</sup>TLHQ151 QUARTER-WAY IRENE Q151<sup>#</sup>QUARTER-WAY NOTATION N116<sup>#</sup>

Trevor is an absolute ripper of a bull. A Junior son from a strong female pedigree. Trevor is part of the first drop of Junior bulls we have offered. They will not disappoint.

Pen No: 2

Mating Type: Natural

Purchaser:.....

\$.....

## Mid February 2024 TransTasman Angus Cattle Evaluation

TACE TransTasman Angus Cattle Evaluation	EBV	Birth Wt.	Milk	200 Wt.	400 Wt.	600 Wt.	Scrotal Size	Carcase Wt.	EMA	Rump Fat	IMF%
		+5.3	+16	+52	+95	+121	+1.8	+74	+4.5	-0.4	+2.0
		73%	56%	67%	69%	72%	72%	58%	55%	57%	60%

Traits Observed: BWT,400WT,600WT,SC,Scan(EMA,Rib,Rump,IMF) Number of Herds: 0, Prog Analysed: 0, Genomic Prog: 0



10 QUARTER-WAY THOR T341<sup>#</sup>

HBR

Ident: TLH22T341

Born: 24/8/2022

AMFU,CAFU,DD2%,NHFU

G A R PROPHET<sup>SV</sup>SMPQ400 PATHFINDER PROPHET Q400<sup>SV</sup>PATHFINDER BOWMAN G509<sup>#</sup>IRELANDS GALAXY G43<sup>SV</sup>TLHN4 QUARTER-WAY NADIA N4<sup>#</sup>QUARTER-WAY JESSEMY J80<sup>#</sup>

Thor is a prophet son with fantastic growth for age. Well muscled young bull structurally correct.

Pen No: 2

Mating Type: **Natural**

Purchaser:.....

\$.....

## Mid February 2024 TransTasman Angus Cattle Evaluation

TACE TransTasman Angus Cattle Evaluation	EBV	Birth Wt.	Milk	200 Wt.	400 Wt.	600 Wt.	Scrotal Size	Carcase Wt.	EMA	Rump Fat	IMF%
		+5.9	+15	+56	+95	+121	+1.3	+63	+3.0	-2.5	+1.6
		73%	56%	67%	69%	73%	72%	59%	57%	59%	62%

Traits Observed: BWT,400WT,600WT,SC,Scan(EMA,Rib,Rump,IMF) Number of Herds: 0, Prog Analysed: 0, Genomic Prog: 0

11 QUARTER-WAY TORONTO T231<sup>#</sup>

HBR

Ident: TLH22T231

Born: 21/7/2022

AMFU,CAFU,DDFU,NHFU

MATAURI REALITY 839<sup>#</sup>DXTP224 TEXAS REALITY P224<sup>PV</sup>TEXAS OMNIA M363<sup>SV</sup>CLUDEN NEWRY GLORY G13<sup>SV</sup>TLHK35 QUARTER-WAY KALINDA K35<sup>#</sup>QUARTER-WAY GUILLENA G77<sup>#</sup>

Check this boy out! Toronto is a bigger framed bull, strong and good footed. Reality son from an older cow line. Fantastic genetics. Positive fats. Absolute meat machine. Little patch of white on his scrotal.

Pen No: 2

Mating Type: **AI**

Purchaser:.....

\$.....

## Mid February 2024 TransTasman Angus Cattle Evaluation

TACE TransTasman Angus Cattle Evaluation	EBV	Birth Wt.	Milk	200 Wt.	400 Wt.	600 Wt.	Scrotal Size	Carcase Wt.	EMA	Rump Fat	IMF%
		+3.0	+12	+42	+79	+101	+2.5	+54	+2.0	+2.7	+2.2
		74%	56%	68%	71%	74%	74%	60%	57%	59%	61%

Traits Observed: GL,BWT,400WT,600WT,SC,Scan(EMA,Rib,Rump,IMF) Number of Herds: 0, Prog Analysed: 0, Genomic Prog: 0

12 QUARTER-WAY TEZZA T108<sup>#</sup>

HBR

Ident: TLH22T108

Born: 5/7/2022

AMFU,CAFU,DDFU,NHFU

MILLAH MURRAH LOCH UP L133<sup>PV</sup>SFNN244 NAMPARA N244<sup>SV</sup>NAMPARA H07<sup>SV</sup>IRELANDS HIDDEN H446<sup>PV</sup>TLHL119 QUARTER-WAY LUCINDA L119<sup>#</sup>QUARTER-WAY JEMMA J63<sup>#</sup>

Tezzais a showy young bull, with a strong jaw, loads of muscle and good structure. Pedigree features Filbert. He was a strong, meaty bull. His strength and longevity continues to pass down through the generations.

Pen No: 2

Mating Type: **Natural**

Purchaser:.....

\$.....

## Mid February 2024 TransTasman Angus Cattle Evaluation

TACE TransTasman Angus Cattle Evaluation	EBV	Birth Wt.	Milk	200 Wt.	400 Wt.	600 Wt.	Scrotal Size	Carcase Wt.	EMA	Rump Fat	IMF%
		+5.0	+17	+50	+86	+110	+2.3	+63	+0.4	-1.3	+2.5
		74%	50%	67%	70%	73%	73%	59%	54%	56%	56%

Traits Observed: BWT,400WT,600WT,SC,Scan(EMA,Rib,Rump,IMF) Number of Herds: 0, Prog Analysed: 0, Genomic Prog: 0

13 QUARTER-WAY TRIGGER T207<sup>#</sup>

HBR

Ident: TLH22T207

Born: 18/7/2022

AMFU,CAFU,DDFU,NH3%

S CHISUM 255<sup>SV</sup>NMMQ96 MILLAH MURRAH QUIXOTE Q96<sup>PV</sup>MILLAH MURRAH BRENDA N8<sup>PV</sup>CLUDEN NEWRY GLORY G13<sup>SV</sup>TLHK57 QUARTER-WAY KATHERINE K57<sup>#</sup>QUARTER-WAY GIDGET G120<sup>#</sup>

Our first drop of Millah Murrah Quixote's are really performing, both male and female. Trigger boasts an older cow line. Low BW. Great rear and superb temperament. A perfect gentleman.

Pen No: 2

Mating Type: AI

Purchaser:.....

\$.....

## Mid February 2024 TransTasman Angus Cattle Evaluation

TACE TransTasman Angus Cattle Evaluation	EBV	Birth Wt.	Milk	200 Wt.	400 Wt.	600 Wt.	Scrotal Size	Carcase Wt.	EMA	Rump Fat	IMF%
		+3.8	+18	+50	+87	+109	+3.4	+64	+0.2	-0.4	+1.5
		75%	56%	70%	72%	75%	75%	61%	58%	60%	61%

Traits Observed: GL,BWT,400WT,600WT,SC,Scan(EMA,Rib,Rump,IMF) Number of Herds: 0, Prog Analysed: 0, Genomic Prog: 0

14 QUARTER-WAY TRUEBLOOD T125<sup>#</sup>

HBR

Ident: TLH22T125

Born: 7/7/2022

AMFU,CAFU,DDFU,NHFU

MILLAH MURRAH LOCH UP L133<sup>PV</sup>SFNN244 NAMPARA N244<sup>SV</sup>NAMPARA H07<sup>SV</sup>MERCHISTON GENERATE 243<sup>#</sup>TLHM64 QUARTER-WAY MARILYN M64<sup>#</sup>QUARTER-WAY WARATAH C61<sup>#</sup>

Trueblood is another bull with an exceptional pedigree. Low BW. Great EMA. Muscularity and temperament. N244 breed easy calvers.

Pen No: 2

Mating Type: Natural

Purchaser:.....

\$.....

## Mid February 2024 TransTasman Angus Cattle Evaluation

TACE TransTasman Angus Cattle Evaluation	EBV	Birth Wt.	Milk	200 Wt.	400 Wt.	600 Wt.	Scrotal Size	Carcase Wt.	EMA	Rump Fat	IMF%
		+5.0	+16	+45	+77	+96	+1.9	+55	+4.6	-0.9	+1.8
		74%	52%	68%	70%	74%	73%	60%	55%	57%	56%

Traits Observed: BWT,400WT,600WT,SC,Scan(EMA,Rib,Rump,IMF) Number of Herds: 0, Prog Analysed: 0, Genomic Prog: 0

15 QUARTER-WAY TAIKO T358<sup>#</sup>

HBR

Ident: TLH22T358

Born: 28/8/2022

AMFU,CAFU,DDFU,NHFU

TAIMATE LAZARUS L12<sup>SV</sup>TLHR198 QUARTER-WAY ROSCOE R198<sup>SV</sup>QUARTER-WAY KATRI K16<sup>#</sup>QUARTER-WAY MACGILL M168<sup>SV</sup>TLHR121 QUARTER-WAY RONALDA R121<sup>#</sup>QUARTER-WAY GEORGINA G18<sup>#</sup>

Taiko sports NZ blood in both sides of his pedigree. This strong young meat maker sports a moderate frame size and great temperament.

Pen No: 2

Mating Type: Natural

Purchaser:.....

\$.....

## Mid February 2024 TransTasman Angus Cattle Evaluation

TACE TransTasman Angus Cattle Evaluation	EBV	Birth Wt.	Milk	200 Wt.	400 Wt.	600 Wt.	Scrotal Size	Carcase Wt.	EMA	Rump Fat	IMF%
		+5.4	+15	+47	+91	+116	+1.8	+63	+3.9	+0.4	+0.2
		72%	51%	66%	69%	73%	71%	58%	52%	55%	56%

Traits Observed: BWT,400WT,600WT,SC,Scan(EMA,Rib,Rump,IMF) Number of Herds: 0, Prog Analysed: 0, Genomic Prog: 0



16 QUARTER-WAY TIME SQUARE T43<sup>#</sup>

HBR

Ident: TLH22T43

Born: 27/5/2022

AMFU,CAFU,DDFU,NHFU

MATAURI REALITY 839<sup>#</sup>DXTP224 TEXAS REALITY P224<sup>PV</sup>TEXAS OMNIA M363<sup>SV</sup>PEAKES GABBA K556<sup>SV</sup>TLHN182 QUARTER-WAY NIGELLA N182<sup>#</sup>QUARTER-WAY JELENA J62<sup>#</sup>

Time Square is a thick meat maker. Reality crossed with an incredibly strong cow Low BW. Postive fats and EMA.

Pen No: 3

Mating Type: AI

Purchaser:.....

\$.....

## Mid February 2024 TransTasman Angus Cattle Evaluation

TACE TransTasman Angus Cattle Evaluation	EBV	Birth Wt.	Milk	200 Wt.	400 Wt.	600 Wt.	Scrotal Size	Carcase Wt.	EMA	Rump Fat	IMF%
		+3.7	+12	+41	+78	+103	+3.1	+52	+3.5	+0.5	+0.7
		74%	56%	68%	68%	73%	73%	59%	57%	59%	61%

Traits Observed: GL,BWT,600WT,SC,Scan(EMA,Rib,Rump,IMF) Number of Herds: 0, Prog Analysed: 0, Genomic Prog: 0

17 QUARTER-WAY TAIWAN T77<sup>#</sup>

HBR

Ident: TLH22T77

Born: 3/6/2022

AMFU,CAFU,DDFU,NHFU

MATAURI REALITY 839<sup>#</sup>DXTP224 TEXAS REALITY P224<sup>PV</sup>TEXAS OMNIA M363<sup>SV</sup>CLUNIE RANGE LOGAN L1<sup>SV</sup>TLHN106 QUARTER-WAY NOOSA N106<sup>SV</sup>QUARTER-WAY LORRAINE L100<sup>#</sup>

How good are the Reality sons! Taiwan has a strong jaw, great hind and feet, structure, muscle and temperament.

Pen No: 3

Mating Type: AI

Purchaser:.....

\$.....

## Mid February 2024 TransTasman Angus Cattle Evaluation

TACE TransTasman Angus Cattle Evaluation	EBV	Birth Wt.	Milk	200 Wt.	400 Wt.	600 Wt.	Scrotal Size	Carcase Wt.	EMA	Rump Fat	IMF%
		+3.8	+11	+45	+82	+108	+3.1	+56	+2.4	+0.8	+1.2
		74%	56%	68%	68%	73%	73%	59%	56%	58%	60%

Traits Observed: GL,BWT,600WT,SC,Scan(EMA,Rib,Rump,IMF) Number of Herds: 0, Prog Analysed: 0, Genomic Prog: 0

18 QUARTER-WAY TUDOR T2<sup>#</sup>

HBR

Ident: TLH22T2

Born: 13/3/2022

AMFU,CAFU,DDFU,NHFU

MILLAH MURRAH KINGDOM K35<sup>PV</sup>NZE17683017306 KAHARAU 306<sup>SV</sup>KAHARAU 12-9438<sup>#</sup>BANQUET ABODE A005<sup>PV</sup>TLHH58 QUARTER-WAY HIRIKO H58<sup>PV</sup>QUARTER-WAY FRANNIE F49<sup>PV</sup>

Tudor is a Kaharau 306 son out of a fantastic older cow, who goes back to Frannie and C1, both who are still producing every year. An absolute corker of a young bull.

Pen No: 3

Mating Type: ET

Purchaser:.....

\$.....

## Mid February 2024 TransTasman Angus Cattle Evaluation

TACE TransTasman Angus Cattle Evaluation	EBV	Birth Wt.	Milk	200 Wt.	400 Wt.	600 Wt.	Scrotal Size	Carcase Wt.	EMA	Rump Fat	IMF%
		+7.0	+14	+46	+84	+112	+2.0	+43	+4.9	-3.1	+0.4
		74%	64%	74%	73%	73%	73%	65%	64%	65%	68%

Traits Observed: BWT,600WT,SC,Scan(EMA,Rib,Rump,IMF) Number of Herds: 0, Prog Analysed: 0, Genomic Prog: 0

19 QUARTER-WAY TINY TIM T24<sup>#</sup>

HBR

Ident: TLH22T24

Born: 15/5/2022

AMFU,CAFU,DDFU,NHFU

COONAMBLE JUNIOR J266<sup>PV</sup>SFNQ148 NAMPARA JUNIOR Q148<sup>SV</sup>NAMPARA M112<sup>#</sup>QUARTER-WAY NIGEL N63<sup>PV</sup>TLHQ209 QUARTER-WAY IMPULSIVE Q209<sup>#</sup>QUARTER-WAY NATALIE N29<sup>#</sup>

Junior has bred well for us, consistently producing strong, muscular calves. Tiny Tim, who is not so tiny, has fantastic growth for age. Note his 600DW and EMA>

Pen No: 3

Mating Type: **Natural**

Purchaser:.....

\$.....

## Mid February 2024 TransTasman Angus Cattle Evaluation

TACE TransTasman Angus Cattle Evaluation	EBV	Birth Wt.	Milk	200 Wt.	400 Wt.	600 Wt.	Scrotal Size	Carcase Wt.	EMA	Rump Fat	IMF%
		+7.9	+12	+53	+95	+124	+1.0	+74	+7.5	-2.4	+1.6
		72%	52%	65%	66%	72%	71%	57%	51%	53%	56%

Traits Observed: BWT,600WT,SC,Scan(EMA,Rib,Rump,IMF) Number of Herds: 0, Prog Analysed: 0, Genomic Prog: 0

20 QUARTER-WAY TECHNICAL T13<sup>#</sup>

HBR

Ident: TLH22T13

Born: 2/5/2022

AMFU,CAFU,DDFU,NHFU

G A R PROPHET<sup>SV</sup>SMPQ400 PATHFINDER PROPHET Q400<sup>SV</sup>PATHFINDER BOWMAN G509<sup>#</sup>WEERAN M96<sup>SV</sup>TLHQ248 QUARTER-WAY INVICTUS Q248<sup>#</sup>QUARTER-WAY LAVERNE L31<sup>#</sup>

Prophet sons are structurally correct, muscular and boast quiet temperaments. Meet Technical, technically one heck of a meat producer. Loads of thickness behind the shoulders.

Pen No: 3

Mating Type: **Natural**

Purchaser:.....

\$.....

## Mid February 2024 TransTasman Angus Cattle Evaluation

TACE TransTasman Angus Cattle Evaluation	EBV	Birth Wt.	Milk	200 Wt.	400 Wt.	600 Wt.	Scrotal Size	Carcase Wt.	EMA	Rump Fat	IMF%
		+6.1	+11	+53	+86	+108	+1.6	+53	+3.0	-0.7	+2.6
		72%	56%	66%	66%	72%	71%	58%	56%	58%	60%

Traits Observed: BWT,600WT,SC,Scan(EMA,Rib,Rump,IMF) Number of Herds: 0, Prog Analysed: 0, Genomic Prog: 0

21 QUARTER-WAY THUNDER T68<sup>#</sup>

HBR

Ident: TLH22T68

Born: 31/5/2022

AMFU,CAFU,DDFU,NHFU

KAHARAU CLASSIC 10-378<sup>#</sup>NZE17683017444 KAHARAU CLASS MAN 17-444<sup>#</sup>GOLDWHN JESS H601<sup>#</sup>QUARTER-WAY KINGSWELL K73<sup>SV</sup>TLHN222 QUARTER-WAY OPERA N222<sup>#</sup>QUARTER-WAY GERTRUDE G31<sup>#</sup>

An elite Class Man son. Low BW, great structure and meat coverage.

Pen No: 3

Mating Type: **AI**

Purchaser:.....

\$.....

## Mid February 2024 TransTasman Angus Cattle Evaluation

TACE TransTasman Angus Cattle Evaluation	EBV	Birth Wt.	Milk	200 Wt.	400 Wt.	600 Wt.	Scrotal Size	Carcase Wt.	EMA	Rump Fat	IMF%
		+4.1	+13	+40	+74	+97	+2.4	+44	-0.8	-1.6	+1.6
		74%	53%	67%	67%	73%	73%	58%	53%	56%	57%

Traits Observed: GL,BWT,600WT,SC,Scan(EMA,Rib,Rump,IMF) Number of Herds: 0, Prog Analysed: 0, Genomic Prog: 0



22 QUARTER-WAY TAVIS T300#

HBR

Ident: TLH22T300

Born: 9/8/2022

AMFU,CAFU,DDFU,NHFU

MERCHISTON STEAKHOUSE 489#

TLHP124 QUARTER-WAY PRINCETON P124PV

QUARTER-WAY HIRIKO H58PV


BOONAROO JOIN J196SV

TLHN185 QUARTER-WAY NARLA N185#

QUARTER-WAY GWENNY G83#

Tavis is a young Princeton son from a Join female. Predigree +++. DW's, EMA, lots of muscularity. Strong sirey outlook.

Pen No: 4 Mating Type: Natural Purchaser:..... \$.....

Mid February 2024 TransTasman Angus Cattle Evaluation										
 TACE	Birth Wt.	Milk	200 Wt.	400 Wt.	600 Wt.	Scrotal Size	Carcase Wt.	EMA	Rump Fat	IMF%
	+7.4	+12	+56	+101	+132	+4.3	+68	+2.4	-2.4	+0.5
	73%	51%	67%	70%	73%	72%	59%	52%	55%	55%

Traits Observed: BWT,400WT,600WT,SC,Scan(EMA,Rib,Rump,IMF) Number of Herds: 0, Prog Analysed: 0, Genomic Prog: 0

23 QUARTER-WAY TANK T262#

HBR

Ident: TLH22T262

Born: 1/8/2022

AMFU,CAFU,DDFU,NHFU

BEN NEVIS MYSTIC M97SV

TLHQ11 QUARTER-WAY QUAD Q11PV

QUARTER-WAY FRANNIE F49PV


QUARTER-WAY HUDSON H84SV

TLHM105 QUARTER-WAY MERYL M105#

QUARTER-WAY GARDA G93#

Tank is our first Quad son on offer. Quad is a younger versions of his sire Ben Nevis Mystic, all class. Tank has length, depth and muscularity. Positive fats, EMA and mod BW. A great young bull.

Pen No: 4 Mating Type: Natural Purchaser:..... \$.....

Mid February 2024 TransTasman Angus Cattle Evaluation										
 TACE	Birth Wt.	Milk	200 Wt.	400 Wt.	600 Wt.	Scrotal Size	Carcase Wt.	EMA	Rump Fat	IMF%
	+5.7	+13	+46	+86	+107	+3.7	+60	+3.8	+1.7	+1.3
	73%	49%	67%	69%	72%	72%	57%	50%	53%	54%

Traits Observed: BWT,400WT,600WT,SC,Scan(EMA,Rib,Rump,IMF) Number of Herds: 0, Prog Analysed: 0, Genomic Prog: 0

24 QUARTER-WAY TUSK T210#

HBR

Ident: TLH22T210

Born: 18/7/2022

AMFU,CAFU,DD4%,NHFU

TURIROA COMPLETE 16M013#

NZE15603018P224 TURIROA RAGNAR 18P224#

TURIROA L090#


TEXAS MOUNT K002PV

TLHP185 QUARTER-WAY PINKIE P185#

QUARTER-WAY HELMA H40#

Tusk is a good solid bull, who will breed excellent calves. He is another meaty Ragnar son. Great weights and EMA.

Pen No: 4 Mating Type: AI Purchaser:..... \$.....

Mid February 2024 TransTasman Angus Cattle Evaluation										
 TACE	Birth Wt.	Milk	200 Wt.	400 Wt.	600 Wt.	Scrotal Size	Carcase Wt.	EMA	Rump Fat	IMF%
	+6.1	+13	+47	+89	+124	+1.8	+64	+3.1	+0.5	+1.2
	75%	56%	70%	72%	74%	74%	61%	58%	59%	61%

Traits Observed: GL,BWT,400WT,600WT,SC,Scan(EMA,Rib,Rump,IMF) Number of Herds: 0, Prog Analysed: 0, Genomic Prog: 0

25 QUARTER-WAY THOROUGHbred T259<sup>#</sup>

HBR

Ident: TLH22T259

Born: 31/7/2022

AMFU,CAFU,DDFU,NHFU

MERCHISTON STEAKHOUSE 489<sup>#</sup>TLHN164 QUARTER-WAY OPTIONAL N164<sup>SV</sup>QUARTER-WAY JANICE J29<sup>#</sup>PATHFINDER GOLDMARK L1243<sup>PV</sup>TLHP97 QUARTER-WAY PIETRA P97<sup>#</sup>QUARTER-WAY LADONNA L137<sup>#</sup>

Thoroughbred is a good footed Optional son. EMA. Optional is putting a lot of meat into progeny, and this young bull is well covered.

Pen No: 4

Mating Type: **Natural**

Purchaser:.....

\$.....

## Mid February 2024 TransTasman Angus Cattle Evaluation

TACE TransTasman Angus Cattle Evaluation	EBV	Birth Wt.	Milk	200 Wt.	400 Wt.	600 Wt.	Scrotal Size	Carcase Wt.	EMA	Rump Fat	IMF%
		+5.7	+15	+45	+80	+104	+1.8	+55	+4.0	-2.6	+0.7
		73%	44%	66%	69%	72%	72%	57%	51%	54%	51%

Traits Observed: BWT,400WT,600WT,SC,Scan(EMA,Rib,Rump,IMF) Number of Herds: 0, Prog Analysed: 0, Genomic Prog: 0

26 QUARTER-WAY TORR T349<sup>#</sup>

HBR

Ident: TLH22T349

Born: 25/8/2022

AMFU,CAFU,DDFU,NHFU

R B TOUR OF DUTY 177<sup>PV</sup>NBNM97 BEN NEVIS MYSTIC M97<sup>SV</sup>BEN NEVIS GERANIUM H6<sup>#</sup>MERCHISTON GENERATE 243<sup>#</sup>TLHM52 QUARTER-WAY MARIA M52<sup>#</sup>QUARTER-WAY ACHELMY D34<sup>#</sup>

Torr is a Mystic son from a strong cow line. Muscle and EMA. Torr would make a great cow bull. Will breed strong replacement heifers.

Pen No: 4

Mating Type: **Natural**

Purchaser:.....

\$.....

## Mid February 2024 TransTasman Angus Cattle Evaluation

TACE TransTasman Angus Cattle Evaluation	EBV	Birth Wt.	Milk	200 Wt.	400 Wt.	600 Wt.	Scrotal Size	Carcase Wt.	EMA	Rump Fat	IMF%
		+6.6	+14	+45	+84	+109	+0.8	+66	+6.0	-2.6	+0.7
		74%	50%	68%	71%	74%	73%	60%	55%	57%	54%

Traits Observed: BWT,400WT,600WT,SC,Scan(EMA,Rib,Rump,IMF) Number of Herds: 0, Prog Analysed: 0, Genomic Prog: 0

27 QUARTER-WAY TEAMSTER T104<sup>#</sup>

HBR

Ident: TLH22T104

Born: 3/7/2022

AMFU,CAFU,DDFU,NHFU

MILLAH MURRAH LOCH UP L133<sup>PV</sup>SFNN244 NAMPARA N244<sup>SV</sup>NAMPARA H07<sup>SV</sup>MERCHISTON GENERATE 243<sup>#</sup>TLHL45 QUARTER-WAY LETITIA L45<sup>#</sup>QUARTER-WAY WARATAH C61<sup>#</sup>

Teamster sport an incredible pedigree. Muscle, structure, EMA, 600 DW and the list goes on. This will be the last year Nampara N244 sons will be offered. Sadly we lost him last breeding season.

Pen No: 4

Mating Type: **Natural**

Purchaser:.....

\$.....

## Mid February 2024 TransTasman Angus Cattle Evaluation

TACE TransTasman Angus Cattle Evaluation	EBV	Birth Wt.	Milk	200 Wt.	400 Wt.	600 Wt.	Scrotal Size	Carcase Wt.	EMA	Rump Fat	IMF%
		+6.4	+17	+53	+94	+117	+3.1	+68	+3.8	-3.0	+0.6
		74%	52%	68%	70%	74%	73%	60%	55%	57%	57%

Traits Observed: BWT,400WT,600WT,SC,Scan(EMA,Rib,Rump,IMF) Number of Herds: 0, Prog Analysed: 0, Genomic Prog: 0



28 QUARTER-WAY TIDALWAVE T40<sup>#</sup>

HBR

Ident: TLH22T40

Born: 26/5/2022

AMFU,CAFU,DDFU,NHFU

KAHARAU CLASSIC 10-378<sup>#</sup>NZE17683017444 KAHARAU CLASS MAN 17-444<sup>#</sup>GOLDWHN JESS H601<sup>#</sup>MERCHISTON GENERATE 243<sup>#</sup>TLHL43 QUARTER-WAY LESLIE L43<sup>#</sup>QUARTER-WAY C48<sup>#</sup>

Another NZ cross bull. Tidalwave is a larger framed bull, well muscled, structure and the most beautiful temperament. An exceptional young bull.

Pen No: 4

Mating Type: AI

Purchaser:.....

\$.....

## Mid February 2024 TransTasman Angus Cattle Evaluation

TACE TransTasman Angus Cattle Evaluation	EBV	Birth Wt.	Milk	200 Wt.	400 Wt.	600 Wt.	Scrotal Size	Carcase Wt.	EMA	Rump Fat	IMF%
		+5.2	+15	+43	+81	+106	+1.5	+52	-2.5	-3.8	+2.2
		75%	57%	70%	72%	75%	75%	62%	58%	60%	61%

Traits Observed: GL,BWT,400WT,600WT,SC,Scan(EMA,Rib,Rump,IMF) Number of Herds: 0, Prog Analysed: 0, Genomic Prog: 0

29 QUARTER-WAY TORPEDO T242<sup>#</sup>

HBR

Ident: TLH22T242

Born: 25/7/2022

AMFU,CAFU,DDFU,NHFU

BEN NEVIS MYSTIC M97<sup>SV</sup>TLHQ11 QUARTER-WAY QUAD Q11<sup>PV</sup>QUARTER-WAY FRANNIE F49<sup>PV</sup>QUARTER-WAY FALKNER F10<sup>SV</sup>TLHK112 QUARTER-WAY KINAKI K112<sup>#</sup>QUARTER-WAY X3<sup>#</sup>

Torpedo has meat, EMA, mod BW and pedigree. Sire Quad dam Frannie and Grand Dam C1 are still active in the herd. Superb cows. Maternal pedigree features sire Z18 and dam X3. Pedigree royalty.

Pen No: 4

Mating Type: Natural

Purchaser:.....

\$.....

## Mid February 2024 TransTasman Angus Cattle Evaluation

TACE TransTasman Angus Cattle Evaluation	EBV	Birth Wt.	Milk	200 Wt.	400 Wt.	600 Wt.	Scrotal Size	Carcase Wt.	EMA	Rump Fat	IMF%
		+5.5	+14	+40	+76	+89	+2.6	+51	+4.4	-0.8	+0.5
		72%	52%	66%	65%	65%	62%	56%	53%	56%	58%

Traits Observed: BWT,600WT,SC,Scan(EMA,Rib,Rump,IMF) Number of Herds: 0, Prog Analysed: 0, Genomic Prog: 0

30 QUARTER-WAY TIMOTHY T329<sup>#</sup>

HBR

Ident: TLH22T329

Born: 22/8/2022

AMFU,CAFU,DDFU,NHFU

MERCHISTON STEAKHOUSE 489<sup>#</sup>TLHN164 QUARTER-WAY OPTIONAL N164<sup>SV</sup>QUARTER-WAY JANICE J29<sup>#</sup>MERCHISTON GENERATE 243<sup>#</sup>TLHL71 QUARTER-WAY LINDA L71<sup>#</sup>QUARTER-WAY GEORGIE G91<sup>#</sup>

Timothy just oozes meat. Another NZ cross. Great structure, depth, feet.....He has everything going for him. Very impressive young bull.

Pen No: 5

Mating Type: Natural

Purchaser:.....

\$.....

## Mid February 2024 TransTasman Angus Cattle Evaluation

TACE TransTasman Angus Cattle Evaluation	EBV	Birth Wt.	Milk	200 Wt.	400 Wt.	600 Wt.	Scrotal Size	Carcase Wt.	EMA	Rump Fat	IMF%
		+7.0	+18	+51	+98	+126	+3.7	+67	+2.0	-4.0	-0.1
		74%	47%	68%	71%	74%	73%	59%	53%	56%	52%

Traits Observed: BWT,400WT,600WT,SC,Scan(EMA,Rib,Rump,IMF) Number of Herds: 0, Prog Analysed: 0, Genomic Prog: 0

31 QUARTER-WAY TRUCKIE T145<sup>#</sup>

HBR

Ident: TLH22T145

Born: 11/7/2022

AMFU,CAFU,DDFU,NHFU

MATAURI REALITY 839<sup>#</sup>DXTP224 TEXAS REALITY P224<sup>PV</sup>TEXAS OMNIA M363<sup>SV</sup>CLUDEN NEWRY GLORY G13<sup>SV</sup>TLHK3 QUARTER-WAY KALA K3<sup>#</sup>QUARTER-WAY GILL G106<sup>#</sup>

Truckie is a Reality son from an older cow. Postive fats. What more can we say about the Reality boys. Just stylish, easy doing cattle. Super young man.

Pen No: 5

Mating Type: AI

Purchaser:.....

\$.....

## Mid February 2024 TransTasman Angus Cattle Evaluation

TACE TransTasman Angus Cattle Evaluation	EBV	Birth Wt.	Milk	200 Wt.	400 Wt.	600 Wt.	Scrotal Size	Carcase Wt.	EMA	Rump Fat	IMF%
		+3.1	+11	+43	+82	+107	+2.2	+59	+2.1	+1.5	+1.9
		75%	56%	69%	71%	74%	74%	60%	57%	59%	61%

Traits Observed: GL,BWT,400WT,600WT,SC,Scan(EMA,Rib,Rump,IMF) Number of Herds: 0, Prog Analysed: 0, Genomic Prog: 0

32 QUARTER-WAY THEO T303<sup>#</sup>

HBR

Ident: TLH22T303

Born: 10/8/2022

AMFU,CAFU,DDFU,NHFU

MERCHISTON STEAKHOUSE 489<sup>#</sup>TLHP124 QUARTER-WAY PRINCETON P124<sup>PV</sup>QUARTER-WAY HIRIKO H58<sup>PV</sup>IRELANDS GALAXY G43<sup>SV</sup>TLHK153 QUARTER-WAY KILKIE K153<sup>#</sup>QUARTER-WAY FIDELITY F26<sup>#</sup>

Theo is a solid young bull, with so much meat. Sire Princeton is a star and breeds stars. Grand sire Steakhouse is still breeding and has sired many leading sires throughout NZ.

Pen No: 5

Mating Type: Natural

Purchaser:.....

\$.....

## Mid February 2024 TransTasman Angus Cattle Evaluation

TACE TransTasman Angus Cattle Evaluation	EBV	Birth Wt.	Milk	200 Wt.	400 Wt.	600 Wt.	Scrotal Size	Carcase Wt.	EMA	Rump Fat	IMF%
		+6.2	+13	+49	+89	+106	+1.9	+57	+3.3	-1.7	+0.0
		74%	56%	69%	71%	74%	74%	61%	57%	59%	61%

Traits Observed: BWT,400WT,600WT,SC,Scan(EMA,Rib,Rump,IMF) Number of Herds: 0, Prog Analysed: 0, Genomic Prog: 0

33 QUARTER-WAY TALIBAN T236<sup>#</sup>

HBR

Ident: TLH22T236

Born: 23/7/2022

AMFU,CAFU,DDFU,NHFU

G A R PROPHET<sup>SV</sup>SMPQ400 PATHFINDER PROPHET Q400<sup>SV</sup>PATHFINDER BOWMAN G509<sup>#</sup>PEAKES LAD K638<sup>SV</sup>TLHQ38 QUARTER-WAY QUANDONG Q38<sup>#</sup>QUARTER-WAY LUCY L115<sup>#</sup>

Prophet son out of a young cow. Taliban has great EMA and 600DW. Prophet is breeding very evenly putting his strength, muscle and structure into his progeny.

Pen No: 5

Mating Type: Natural

Purchaser:.....

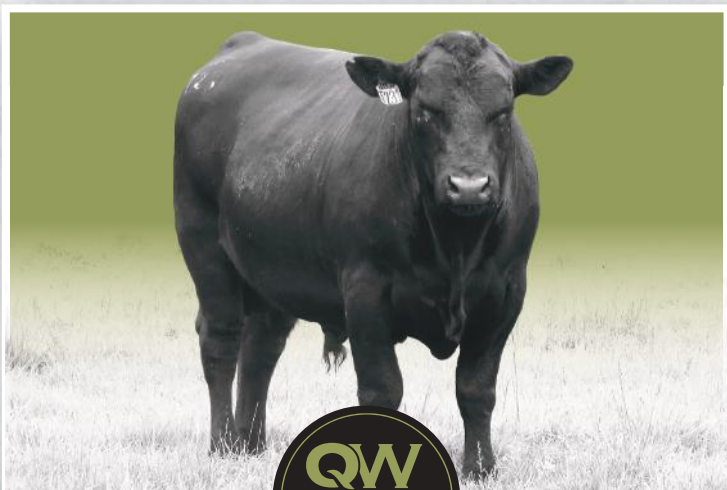
\$.....

## Mid February 2024 TransTasman Angus Cattle Evaluation

TACE TransTasman Angus Cattle Evaluation	EBV	Birth Wt.	Milk	200 Wt.	400 Wt.	600 Wt.	Scrotal Size	Carcase Wt.	EMA	Rump Fat	IMF%
		+6.0	+13	+60	+99	+130	+3.0	+66	+4.1	-1.2	+3.2
		73%	55%	66%	69%	72%	72%	58%	55%	57%	60%

Traits Observed: BWT,400WT,600WT,SC,Scan(EMA,Rib,Rump,IMF) Number of Herds: 0, Prog Analysed: 0, Genomic Prog: 0

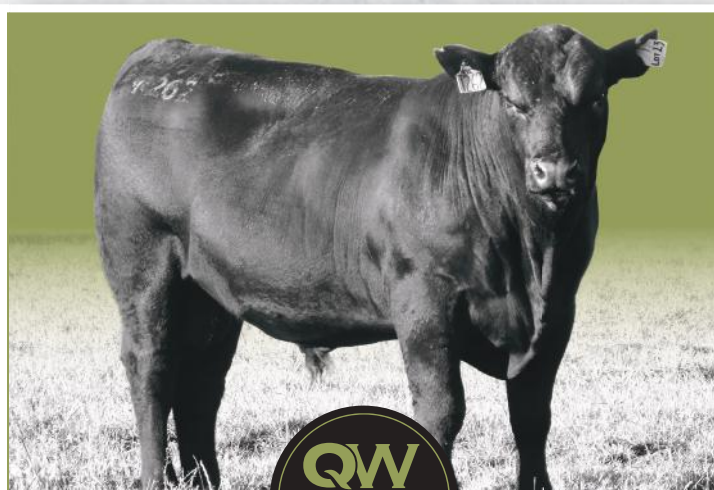




**QUARTER-WAY Toronto T231**

LOT 11

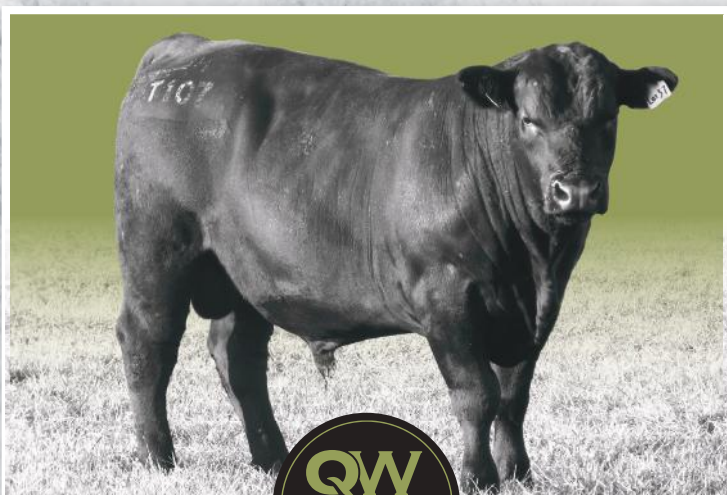
Check this boy out! Toronto is a bigger framed bull, strong and good footed. Reality son from an older cow line. Fantastic genetics. Positive fats. Absolute meat machine. Little patch of white on his scrotal.



**QUARTER-WAY Tank T262**

LOT 23

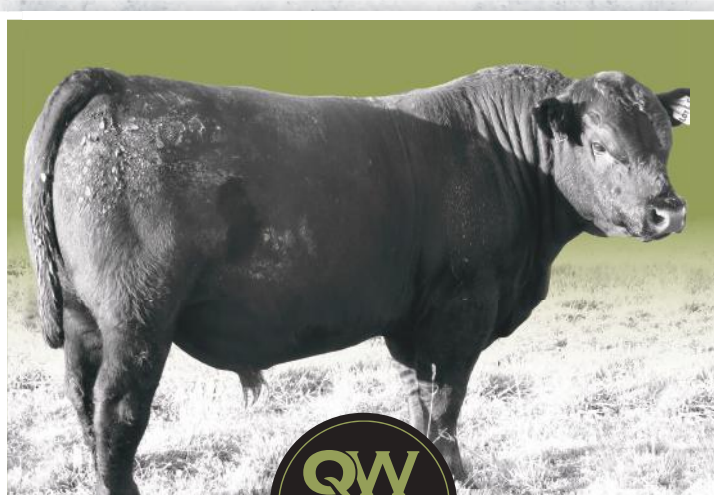
Tank is our first Quad son on offer. Quad is a younger versions of his sire Ben Nevis Mystic, all class. Tank has length, depth and muscularity. Positive fats, EMA and mod BW. A great young bull.



**QUARTER-WAY Tetra T107**

LOT 31

Tetra is another Quad son with good EMA, from an older cow with a prestigious pedigree. Frannie, Z18, Fabia. Proves the longevity of the herd with bulls still featuring in pedigrees long after they have passed on.



**QUARTER-WAY Tarrant T292**

LOT 45

Mystic son from a Generate daughter. Tarrant is a good footed, thick bull with a strong jaw. Strength, structure and EMA.

QW  
QUARTER WAY  
ANGUS

34 QUARTER-WAY THUMPER T268<sup>#</sup>

HBR

Ident: TLH22T268

Born: 3/8/2022

AMFU,CAFU,DDFU,NHFU

R B TOUR OF DUTY 177<sup>PV</sup>NBNM97 BEN NEVIS MYSTIC M97<sup>SV</sup>BEN NEVIS GERANIUM H6<sup>#</sup>PATHFINDER GOLDMARK L1243<sup>PV</sup>TLHP70 QUARTER-WAY PETRA P70<sup>#</sup>QUARTER-WAY LIAH L47<sup>#</sup>

Thumper by name, Thumper by nature. Ripper young bull with muscle, structure, EMA, 600DW, mod BW and pedigree. Mystic still breeding, increasing the longevity of his progeny.

Pen No: 5

Mating Type: **Natural**

Purchaser:.....

\$.....

## Mid February 2024 TransTasman Angus Cattle Evaluation

TACE TransTasman Angus Cattle Evaluation	EBV	Birth Wt.	Milk	200 Wt.	400 Wt.	600 Wt.	Scrotal Size	Carcase Wt.	EMA	Rump Fat	IMF%
		+6.5	+17	+54	+101	+133	+2.7	+83	+5.8	-4.2	+0.3
		73%	47%	67%	70%	73%	73%	58%	53%	56%	53%

Traits Observed: BWT,400WT,600WT,SC,Scan(EMA,Rib,Rump,IMF) Number of Herds: 0, Prog Analysed: 0, Genomic Prog: 0

35 QUARTER-WAY TRUMAN T374<sup>#</sup>

HBR

Ident: TLH22T374

Born: 1/9/2022

AMFU,CAFU,DDFU,NHFU

COONAMBLE JUNIOR J266<sup>PV</sup>SFNQ148 NAMPARA JUNIOR Q148<sup>SV</sup>NAMPARA M112<sup>#</sup>KIDMAN EXECUTIVE L5<sup>SV</sup>TLHQ58 QUARTER-WAY QURIOSITY Q58<sup>#</sup>QUARTER-WAY MARJORIE M71<sup>SV</sup>

Truman is one of the younger bulls of the draft. EMA, meat and structure. A Junior son from strong maternal pedigree. We love the strength, structure and longevity we have bred into our females. They are the base of our herd.

Pen No: 5

Mating Type: **Natural**

Purchaser:.....

\$.....

## Mid February 2024 TransTasman Angus Cattle Evaluation

TACE TransTasman Angus Cattle Evaluation	EBV	Birth Wt.	Milk	200 Wt.	400 Wt.	600 Wt.	Scrotal Size	Carcase Wt.	EMA	Rump Fat	IMF%
		+5.0	+12	+45	+82	+106	+2.2	+64	+6.6	+0.3	+1.0
		72%	55%	67%	69%	72%	72%	58%	54%	56%	59%

Traits Observed: BWT,400WT,600WT,SC,Scan(EMA,Rib,Rump,IMF) Number of Herds: 0, Prog Analysed: 0, Genomic Prog: 0

36 QUARTER-WAY TBONE T227<sup>#</sup>

HBR

Ident: TLH22T227

Born: 21/7/2022

AMFU,CAFU,DDFU,NHFU

BEN NEVIS MYSTIC M97<sup>SV</sup>TLHQ11 QUARTER-WAY QUAD Q11<sup>PV</sup>QUARTER-WAY FRANNIE F49<sup>PV</sup>IRELANDS FLETCHER F1<sup>PV</sup>TLHJ94 QUARTER-WAY JILLIANA J94<sup>#</sup>QUARTER-WAY T28<sup>#</sup>

Tbone has great structure and meat coverage, coupled with EMA and good temperament. Quad sons all feature strong EMA.

Pen No: 5

Mating Type: **Natural**

Purchaser:.....

\$.....

## Mid February 2024 TransTasman Angus Cattle Evaluation

TACE TransTasman Angus Cattle Evaluation	EBV	Birth Wt.	Milk	200 Wt.	400 Wt.	600 Wt.	Scrotal Size	Carcase Wt.	EMA	Rump Fat	IMF%
		+4.4	+15	+39	+75	+91	+3.3	+49	+6.8	-2.2	+0.9
		73%	54%	67%	69%	72%	72%	58%	53%	56%	58%

Traits Observed: BWT,400WT,600WT,SC,Scan(EMA,Rib,Rump,IMF) Number of Herds: 0, Prog Analysed: 0, Genomic Prog: 0

## 37 QUARTER-WAY TETRA T107#

HBR

Ident: TLH22T107

Born: 5/7/2022

AMFU,CAFU,DDFU,NHFU

BEN NEVIS MYSTIC M97<sup>SV</sup>TLHQ11 QUARTER-WAY QUAD Q11<sup>PV</sup>QUARTER-WAY FRANNIE F49<sup>PV</sup>QUARTER-WAY FALKNER F10<sup>SV</sup>

TLHH109 QUARTER-WAY HEGIRA H109#

QUARTER-WAY FABIA F1#

Tetra is another Quad son with good EMA, from an older cow with a prestigious pedigree. Frannie, Z18, Fabia. Proves the longevity of the herd with bulls still featuring in pedigrees long after they have passed on.


Pen No: 5

Mating Type: **Natural**

Purchaser:.....

\$.....

## Mid February 2024 TransTasman Angus Cattle Evaluation

TACE		Birth Wt.	Milk	200 Wt.	400 Wt.	600 Wt.	Scrotal Size	Carcase Wt.	EMA	Rump Fat	IMF%
	EBV	+6.9	+11	+40	+73	+83	+1.1	+48	+4.1	-0.1	+1.0
	Acc	74%	53%	68%	70%	73%	73%	59%	53%	56%	57%

Traits Observed: BWT,400WT,600WT,SC,Scan(EMA,Rib,Rump,IMF) Number of Herds: 0, Prog Analysed: 0, Genomic Prog: 0

## 38 QUARTER-WAY THUNDERSTRUCK T408#

HBR

Ident: TLH22T408

Born: 12/9/2022

AMFU,CAFU,DDFU,NH3%

G A R PROPHET<sup>SV</sup>SMPQ400 PATHFINDER PROPHET Q400<sup>SV</sup>

PATHFINDER BOWMAN G509#

MERCHISTON STEAKHOUSE 489#

TLHP28 QUARTER-WAY PATSY P28#

QUARTER-WAY HUBERTA H75#

Thunderstruck!!!! Prophet son crossed with a Steakhouse daughter. Strength, structure, well muscled. Very nice.


Pen No: 5

Mating Type: **Natural**

Purchaser:.....

\$.....

## Mid February 2024 TransTasman Angus Cattle Evaluation

TACE		Birth Wt.	Milk	200 Wt.	400 Wt.	600 Wt.	Scrotal Size	Carcase Wt.	EMA	Rump Fat	IMF%
	EBV	+6.1	+15	+58	+100	+125	+1.5	+68	+0.4	-1.9	+1.6
	Acc	73%	56%	67%	69%	72%	72%	59%	56%	58%	60%

Traits Observed: BWT,400WT,600WT,SC,Scan(EMA,Rib,Rump,IMF) Number of Herds: 0, Prog Analysed: 0, Genomic Prog: 0

## 39 QUARTER-WAY TRUCKER T15#

HBR

Ident: TLH22T15

Born: 3/5/2022

AMFU,CAFU,DDFU,NHFU

COONAMBLE JUNIOR J266<sup>PV</sup>SFNQ148 NAMPARA JUNIOR Q148<sup>SV</sup>

NAMPARA M112#

BOONAROO JOIN J196<sup>SV</sup>

TLHQ231 QUARTER-WAY INDIGO Q231#

QUARTER-WAY LUCINDA L119#

Meaty young Junior son from a Join female. Trucker has a strong jaw and back. EMA, 600DW. Meat producer on good feet and legs.


Pen No: 6

Mating Type: **Natural**

Purchaser:.....

\$.....

## Mid February 2024 TransTasman Angus Cattle Evaluation

TACE		Birth Wt.	Milk	200 Wt.	400 Wt.	600 Wt.	Scrotal Size	Carcase Wt.	EMA	Rump Fat	IMF%
	EBV	+6.8	+11	+54	+95	+126	+1.3	+74	+6.9	-2.1	+1.1
	Acc	72%	53%	65%	65%	71%	71%	57%	53%	55%	57%

Traits Observed: BWT,600WT,SC,Scan(EMA,Rib,Rump,IMF) Number of Herds: 0, Prog Analysed: 0, Genomic Prog: 0



40 QUARTER-WAY TOMAHAWK T121<sup>#</sup>

HBR

Ident: TLH22T121

Born: 7/7/2022

AMFU,CAFU,DD12%,NHFU

COONAMBLE JUNIOR J266<sup>PV</sup>SFNQ148 NAMPARA JUNIOR Q148<sup>SV</sup>NAMPARA M112<sup>#</sup>MATAURI OUTLIER F031<sup>SV</sup>TLHP6 QUARTER-WAY PANPHILA P6<sup>#</sup>QUARTER-WAY HIGHLAND H115<sup>#</sup>

Tomahawk is another typical Junior son. Mod BW, EMA, muscle and structure.


Pen No: 6

Mating Type: **Natural**

Purchaser:.....

\$.....

## Mid February 2024 TransTasman Angus Cattle Evaluation

TACE		Birth Wt.	Milk	200 Wt.	400 Wt.	600 Wt.	Scrotal Size	Carcase Wt.	EMA	Rump Fat	IMF%
	EBV	+5.1	+11	+46	+80	+109	+1.8	+59	+9.1	-0.9	+1.7
	Acc	73%	57%	67%	70%	72%	70%	59%	57%	59%	61%

Traits Observed: BWT,400WT,600WT,SC,Scan(EMA,Rib,Rump,IMF) Number of Herds: 0, Prog Analysed: 0, Genomic Prog: 0

41 QUARTER-WAY TIME TEAM T46<sup>#</sup>

HBR

Ident: TLH22T46

Born: 27/5/2022

AMFU,CAFU,DDFU,NH3%

TURIROA COMPLETE 16M013<sup>#</sup>NZE15603018P224 TURIROA RAGNAR 18P224<sup>#</sup>TURIROA L090<sup>#</sup>MERCHISTON STEAKHOUSE 489<sup>#</sup>TLHN166 QUARTER-WAY NAKED N166<sup>#</sup>QUARTER-WAY JENNIFER J64<sup>#</sup>

Time Team is a Ragnar son. Positive fats, muscle and structure. Good width behind the shoulders. Great rump.


Pen No: 6

Mating Type: **AI**

Purchaser:.....

\$.....

## Mid February 2024 TransTasman Angus Cattle Evaluation

TACE		Birth Wt.	Milk	200 Wt.	400 Wt.	600 Wt.	Scrotal Size	Carcase Wt.	EMA	Rump Fat	IMF%
	EBV	+4.0	+16	+41	+78	+108	+2.5	+54	-0.5	+0.5	+0.4
	Acc	75%	56%	69%	70%	74%	75%	60%	58%	59%	61%

Traits Observed: GL,BWT,600WT,SC,Scan(EMA,Rib,Rump,IMF) Number of Herds: 0, Prog Analysed: 0, Genomic Prog: 0

42 QUARTER-WAY THUNDERBIRD T70<sup>#</sup>

HBR

Ident: TLH22T70

Born: 31/5/2022

AMFU,CAFU,DDFU,NH6%

MATAURI REALITY 839<sup>#</sup>DXTP224 TEXAS REALITY P224<sup>PV</sup>TEXAS OMNIA M363<sup>SV</sup>BANQUET DANCEY D271<sup>SV</sup>TLHH75 QUARTER-WAY HUBERTA H75<sup>#</sup>QUARTER-WAY X3<sup>#</sup>

Thunderbird would make an excellent heifer bull. Low BW coupled with well laid shoulders. Positive fats, structure and meat.


Pen No: 6

Mating Type: **AI**

Purchaser:.....

\$.....

## Mid February 2024 TransTasman Angus Cattle Evaluation

TACE		Birth Wt.	Milk	200 Wt.	400 Wt.	600 Wt.	Scrotal Size	Carcase Wt.	EMA	Rump Fat	IMF%
	EBV	+3.9	+12	+42	+79	+106	+2.9	+54	+1.8	-0.5	+1.3
	Acc	75%	55%	69%	69%	74%	74%	60%	55%	57%	58%

Traits Observed: GL,BWT,600WT,SC,Scan(EMA,Rib,Rump,IMF) Number of Herds: 0, Prog Analysed: 0, Genomic Prog: 0

43 QUARTER-WAY TREASON T54<sup>#</sup>

HBR

Ident: TLH22T54

Born: 29/5/2022

AMFU,CAFU,DDFU,NHFU

KAHARAU CLASSIC 10-378<sup>#</sup>NZE17683017444 KAHARAU CLASS MAN 17-444<sup>#</sup>GOLDWHN JESS H601<sup>#</sup>PEAKES GABBA K556<sup>SV</sup>TLHN181 QUARTER-WAY NELSIE N181<sup>#</sup>QUARTER-WAY GRACIE G33<sup>#</sup>


Class Man son with low BW and positive fats. Treason is a handy young bull with all the attributes showcasing the depth of the catalogue.

Pen No: 6

Mating Type: AI

Purchaser:.....

\$.....

Mid February 2024 TransTasman Angus Cattle Evaluation											
		Birth Wt.	Milk	200 Wt.	400 Wt.	600 Wt.	Scrotal Size	Carcase Wt.	EMA	Rump Fat	IMF%
	EBV	+3.8	+12	+36	+66	+97	+1.0	+43	-4.3	+1.6	+2.0
	Acc	74%	55%	68%	68%	74%	73%	59%	56%	58%	59%

Traits Observed: GL,BWT,600WT,SC,Scan(EMA,Rib,Rump,IMF) Number of Herds: 0, Prog Analysed: 0, Genomic Prog: 0

44 QUARTER-WAY TREMOR T67<sup>#</sup>

HBR

Ident: TLH22T67

Born: 31/5/2022

AMFU,CAFU,DD4%,NHFU

TURIROA COMPLETE 16M013<sup>#</sup>NZE15603018P224 TURIROA RAGNAR 18P224<sup>#</sup>TURIROA L090<sup>#</sup>QUARTER-WAY FILBERT F44<sup>#</sup>TLHJ109 QUARTER-WAY JOANNE J109<sup>#</sup>QUARTER-WAY GERTIE G32<sup>#</sup>


Tremor is a Ragnar son from an older female line featuring Filbert. Class pedigree. Tremor is thick behind the shoulders, good footed and a meaty young bull. Nice!

Pen No: 6

Mating Type: AI

Purchaser:.....

\$.....

Mid February 2024 TransTasman Angus Cattle Evaluation											
		Birth Wt.	Milk	200 Wt.	400 Wt.	600 Wt.	Scrotal Size	Carcase Wt.	EMA	Rump Fat	IMF%
	EBV	+4.7	+15	+43	+84	+111	+3.7	+54	+1.9	-0.6	+0.5
	Acc	75%	54%	69%	70%	75%	75%	60%	57%	59%	60%

Traits Observed: GL,BWT,600WT,SC,Scan(EMA,Rib,Rump,IMF) Number of Herds: 0, Prog Analysed: 0, Genomic Prog: 0

45 QUARTER-WAY TARRANT T292<sup>#</sup>

HBR

Ident: TLH22T292

Born: 8/8/2022

AMFU,CAFU,DDFU,NHFU

R B TOUR OF DUTY 177<sup>PV</sup>NBNM97 BEN NEVIS MYSTIC M97<sup>SV</sup>BEN NEVIS GERANIUM H6<sup>#</sup>MERCHISTON GENERATE 243<sup>#</sup>TLHM47 QUARTER-WAY MADGE M47<sup>#</sup>QUARTER-WAY GLENDORA G114<sup>#</sup>


Mystic son from a Generate daughter. Tarrant is a good footed, thick bull with a strong jaw. Strength, structure and EMA>

Pen No: 7

Mating Type: Natural

Purchaser:.....

\$.....

Mid February 2024 TransTasman Angus Cattle Evaluation											
<div><div>TACE</div><div></div><div>TransTasman Angus Cattle Evaluation</div></div>		Birth Wt.	Milk	200 Wt.	400 Wt.	600 Wt.	Scrotal Size	Carcase Wt.	EMA	Rump Fat	IMF%
	EBV	+6.0	+13	+48	+87	+111	+2.0	+67	+8.1	-0.7	+0.4
	Acc	74%	50%	68%	71%	74%	74%	60%	55%	57%	54%

Traits Observed: BWT,400WT,600WT,SC,Scan(EMA,Rib,Rump,IMF) Number of Herds: 0, Prog Analysed: 0, Genomic Prog: 0

46 QUARTER-WAY TIMEKEEPER T435<sup>#</sup>

HBR

Ident: TLH22T435

Born: 22/9/2022

AMFU,CAFU,DDFU,NHFU

MERCHISTON STEAKHOUSE 489<sup>#</sup>TLHN164 QUARTER-WAY OPTIONAL N164<sup>SV</sup>QUARTER-WAY JANICE J29<sup>#</sup>WATTLETOP MOONSHINE M42<sup>SV</sup>TLHP80 QUARTER-WAY PHILIPPA P80<sup>#</sup>QUARTER-WAY MIRANDA M120<sup>#</sup>

Timekeeper is a well muscled, and structure young Optional son. Gread DW readings and mod BW. Optional was working the commercial herds, but grew into such a stunner he was promoted to the stud herd.

Pen No: 7

Mating Type: **Natural**

Purchaser:.....

\$.....

## Mid February 2024 TransTasman Angus Cattle Evaluation

TACE TransTasman Angus Cattle Evaluation	EBV	Birth Wt.	Milk	200 Wt.	400 Wt.	600 Wt.	Scrotal Size	Carcase Wt.	EMA	Rump Fat	IMF%
		+5.1	+16	+49	+89	+120	+3.3	+62	+0.6	-1.9	+0.9
		73%	47%	67%	70%	73%	72%	58%	53%	56%	52%

Traits Observed: BWT,400WT,600WT,SC,Scan(EMA,Rib,Rump,IMF) Number of Herds: 0, Prog Analysed: 0, Genomic Prog: 0

47 QUARTER-WAY TRIPP T367<sup>#</sup>

HBR

Ident: TLH22T367

Born: 30/8/2022

AMFU,CAFU,DDFU,NHFU

MERCHISTON STEAKHOUSE 489<sup>#</sup>TLHP16 QUARTER-WAY PALMER P16<sup>SV</sup>QUARTER-WAY EGBERTA E41<sup>#</sup>QUARTER-WAY JULIUS J118<sup>SV</sup>TLHM58 QUARTER-WAY MARIETTA M58<sup>#</sup>QUARTER-WAY KALI K4<sup>#</sup>

Tripp features muscle, growth, structure and positive fats. Home-bred sire Palmer, out of Steakhouse is performing true to type. A lot of strength here.

Pen No: 7

Mating Type: **Natural**

Purchaser:.....

\$.....

## Mid February 2024 TransTasman Angus Cattle Evaluation

TACE TransTasman Angus Cattle Evaluation	EBV	Birth Wt.	Milk	200 Wt.	400 Wt.	600 Wt.	Scrotal Size	Carcase Wt.	EMA	Rump Fat	IMF%
		+5.1	+13	+44	+80	+107	+1.9	+54	-2.2	+1.8	+0.8
		74%	51%	67%	69%	72%	71%	58%	51%	54%	56%

Traits Observed: BWT,400WT,600WT,SC,Scan(EMA,Rib,Rump,IMF) Number of Herds: 0, Prog Analysed: 0, Genomic Prog: 0

48 QUARTER-WAY TICKETYBOO T126<sup>#</sup>

HBR

Ident: TLH22T126

Born: 7/7/2022

AMFU,CAFU,DDFU,NHFU

BEN NEVIS MYSTIC M97<sup>SV</sup>TLHQ11 QUARTER-WAY QUAD Q11<sup>PV</sup>QUARTER-WAY FRANNIE F49<sup>PV</sup>QUARTER-WAY KINGSWELL K73<sup>SV</sup>TLHN219 QUARTER-WAY OLYMPUS N219<sup>#</sup>QUARTER-WAY JADE J20<sup>#</sup>

Ticketyboo is aptly named. Quad son crossed with a royal maternal line. +6.5 EMA, structure, meat, longevity and culminating with the most superb temperament.

Pen No: 7

Mating Type: **Natural**

Purchaser:.....

\$.....

## Mid February 2024 TransTasman Angus Cattle Evaluation

TACE TransTasman Angus Cattle Evaluation	EBV	Birth Wt.	Milk	200 Wt.	400 Wt.	600 Wt.	Scrotal Size	Carcase Wt.	EMA	Rump Fat	IMF%
		+5.7	+11	+39	+69	+84	+2.3	+45	+6.4	-0.5	+1.2
		71%	50%	64%	66%	63%	58%	54%	52%	54%	56%

Traits Observed: BWT,400WT,600WT,SC,Scan(EMA,Rib,Rump,IMF) Number of Herds: 0, Prog Analysed: 0, Genomic Prog: 0



49 QUARTER-WAY TORNADO T240<sup>#</sup>

HBR

Ident: TLH22T240

Born: 25/7/2022

AMFU,CAFU,DDFU,NHFU

MILLAH MURRAH LOCH UP L133<sup>PV</sup>SFNN244 NAMPARA N244<sup>SV</sup>NAMPARA H07<sup>SV</sup>QUARTER-WAY FRANK F73<sup>#</sup>TLHK96 QUARTER-WAY KOO K96<sup>#</sup>QUARTER-WAY EFFIE E40<sup>#</sup>

Tornado boast muscle, strength, DW's, structure and capacity. Fab temperament. Super strong maternal line.


Pen No: 7

Mating Type: **Natural**

Purchaser:.....

\$.....

## Mid February 2024 TransTasman Angus Cattle Evaluation

TACE		Birth Wt.	Milk	200 Wt.	400 Wt.	600 Wt.	Scrotal Size	Carcase Wt.	EMA	Rump Fat	IMF%
	EBV	+5.6	+16	+50	+86	+112	+2.2	+68	+0.3	-2.7	+2.3
	Acc	74%	50%	68%	71%	74%	73%	59%	54%	56%	56%

Traits Observed: BWT,400WT,600WT,SC,Scan(EMA,Rib,Rump,IMF) Number of Herds: 0, Prog Analysed: 0, Genomic Prog: 0

50 QUARTER-WAY TOBRUK T454<sup>#</sup>

HBR

Ident: TLH22T454

Born: 6/10/2022

AMFU,CAFU,DDFU,NHFU

G A R PROPHET<sup>SV</sup>SMPQ400 PATHFINDER PROPHET Q400<sup>SV</sup>PATHFINDER BOWMAN G509<sup>#</sup>MERCHISTON STOKER 350<sup>#</sup>TLHN22 QUARTER-WAY NARELLE N22<sup>#</sup>QUARTER-WAY FAYETTE F76<sup>#</sup>

Tobruk is a typical Prophet son. Meat and strength, backed up with a good spread of data. Again a strong female line with a beautiful temperament.


Pen No: 7

Mating Type: **Natural**

Purchaser:.....

\$.....

## Mid February 2024 TransTasman Angus Cattle Evaluation

TACE		Birth Wt.	Milk	200 Wt.	400 Wt.	600 Wt.	Scrotal Size	Carcase Wt.	EMA	Rump Fat	IMF%
	EBV	+6.6	+16	+61	+105	+129	+3.4	+66	+3.7	-1.3	+1.9
	Acc	73%	56%	67%	68%	66%	62%	58%	56%	58%	60%

Traits Observed: BWT,400WT,600WT,SC,Scan(EMA,Rib,Rump,IMF) Number of Herds: 0, Prog Analysed: 0, Genomic Prog: 0

51 QUARTER-WAY THOMPSON T412<sup>#</sup>

HBR

Ident: TLH22T412

Born: 17/9/2022

AMFU,CAFU,DDFU,NHFU

QUARTER-WAY NO NONSENCE N187<sup>SV</sup>TLHR9 QUARTER-WAY RAFFERTY R9<sup>SV</sup>QUARTER-WAY NORDIC N107<sup>#</sup>QUARTER-WAY MACGILL M168<sup>SV</sup>TLHR183 QUARTER-WAY RADIANT R183<sup>#</sup>QUARTER-WAY GWEN G81<sup>#</sup>

Thompson is a true gentleman. He is the only Rafferty son in the sale. Easy doing young sire with a lot meat.


Pen No: 7

Mating Type: **Natural**

Purchaser:.....

\$.....

## Mid February 2024 TransTasman Angus Cattle Evaluation

TACE		Birth Wt.	Milk	200 Wt.	400 Wt.	600 Wt.	Scrotal Size	Carcase Wt.	EMA	Rump Fat	IMF%
	EBV	+6.2	+15	+44	+89	+118	+1.8	+62	+0.4	-0.1	+0.5
	Acc	72%	49%	67%	69%	73%	71%	57%	51%	54%	54%

Traits Observed: BWT,400WT,600WT,SC,Scan(EMA,Rib,Rump,IMF) Number of Herds: 0, Prog Analysed: 0, Genomic Prog: 0

52 QUARTER-WAY TIMON T334<sup>#</sup>

HBR

Ident: TLH22T334

Born: 23/8/2022

AMFU,CAFU,DDFU,NHFU

MERCHISTON STEAKHOUSE 489<sup>#</sup>TLHP16 QUARTER-WAY PALMER P16<sup>SV</sup>QUARTER-WAY EGBERTA E41<sup>#</sup>MERCHISTON GENERATE 243<sup>#</sup>TLHL47 QUARTER-WAY LIAH L47<sup>#</sup>QUARTER-WAY BANNA C45<sup>#</sup>

Timon is a younger bull featuring some of the best bloodlines to come out of NZ. He is a ripper, and will breed strong young calves with a great growth for age.


Pen No: 7

Mating Type: **Natural**

Purchaser:.....

\$.....

## Mid February 2024 TransTasman Angus Cattle Evaluation

TACE		Birth Wt.	Milk	200 Wt.	400 Wt.	600 Wt.	Scrotal Size	Carcase Wt.	EMA	Rump Fat	IMF%
	EBV	+6.6	+13	+49	+88	+115	+2.1	+61	+1.4	-0.3	+0.1
	Acc	74%	56%	68%	70%	73%	72%	59%	54%	56%	58%

Traits Observed: BWT,400WT,600WT,SC,Scan(EMA,Rib,Rump,IMF) Number of Herds: 0, Prog Analysed: 0, Genomic Prog: 0

53 QUARTER-WAY TOM T316<sup>#</sup>

HBR

Ident: TLH22T316

Born: 12/8/2022

AMFU,CAFU,DD13%,NHFU

BEN NEVIS MYSTIC M97<sup>SV</sup>TLHQ11 QUARTER-WAY QUAD Q11<sup>PV</sup>QUARTER-WAY FRANNIE F49<sup>PV</sup>QUARTER-WAY JULIUS J118<sup>SV</sup>TLHM77 QUARTER-WAY MARYLOU M77<sup>#</sup>QUARTER-WAY HIGHLAND H115<sup>#</sup>

Tom has a corker of a pedigree behind him. EMA, mod BW, meat and lots of it, longevity and beautifully tempered.


Pen No: 7

Mating Type: **Natural**

Purchaser:.....

\$.....

## Mid February 2024 TransTasman Angus Cattle Evaluation

TACE		Birth Wt.	Milk	200 Wt.	400 Wt.	600 Wt.	Scrotal Size	Carcase Wt.	EMA	Rump Fat	IMF%
	EBV	+4.6	+15	+42	+80	+91	+2.1	+51	+6.7	-3.1	+0.6
	Acc	73%	49%	65%	67%	71%	71%	56%	50%	53%	54%

Traits Observed: BWT,400WT,600WT,SC,Scan(EMA,Rib,Rump,IMF) Number of Herds: 0, Prog Analysed: 0, Genomic Prog: 0

54 QUARTER-WAY TOPICAL T141<sup>#</sup>

HBR

Ident: TLH22T141

Born: 9/7/2022

AMFU,CAFU,DDFU,NHFU

TURIROA COMPLETE 16M013<sup>#</sup>NZE15603018P224 TURIROA RAGNAR 18P224<sup>#</sup>TURIROA L090<sup>#</sup>PREMIER BROKEN BOW N106<sup>PV</sup>TLHR57 QUARTER-WAY RENATA R57<sup>#</sup>QUARTER-WAY LOLA L88<sup>#</sup>

Meaty Ragnar son with a great 600DW. Topical is thick, wide and has a strong hind.


Pen No: 8

Mating Type: **AI**

Purchaser:.....

\$.....

## Mid February 2024 TransTasman Angus Cattle Evaluation

TACE		Birth Wt.	Milk	200 Wt.	400 Wt.	600 Wt.	Scrotal Size	Carcase Wt.	EMA	Rump Fat	IMF%
	EBV	+4.6	+16	+50	+91	+124	+3.5	+66	+3.0	+0.3	+0.8
	Acc	74%	55%	69%	69%	74%	74%	59%	58%	59%	61%

Traits Observed: GL,BWT,600WT,SC,Scan(EMA,Rib,Rump,IMF) Number of Herds: 0, Prog Analysed: 0, Genomic Prog: 0

55

QUARTER-WAY THE DRAGON T249#

HBR

Ident: TLH22T249

Born: 28/7/2022

AMFU,CAFU,DDFU,NHFU

KIDMAN EXECUTIVE L5<sup>SV</sup>  
TLHR50 QUARTER-WAY RANSOM R50<sup>SV</sup>  
QUARTER-WAY MADONNA M147#  
  
PEAKES GABBA K556<sup>SV</sup>  
TLHR19 QUARTER-WAY RAINE R19#  
QUARTER-WAY MARGARETTA M36#


The Dragon is a young meaty bull who will produce meaty calves. Positive fats. Our homebred sires are producing cracker calves. Their forefather genetics crossed with our strong cow lines has proved a winning combination.

Pen No: 8

Mating Type: Natural

Purchaser:.....

\$.....

Mid February 2024 TransTasman Angus Cattle Evaluation											
	EBV	Birth Wt.	Milk	200 Wt.	400 Wt.	600 Wt.	Scrotal Size	Carcase Wt.	EMA	Rump Fat	IMF%
		+5.5	+9	+41	+78	+111	+1.6	+62	+3.8	+0.0	+1.6
	Acc	72%	53%	65%	65%	72%	71%	56%	52%	55%	57%

Traits Observed: BWT,600WT,SC,Scan(EMA,Rib,Rump,IMF) Number of Herds: 0, Prog Analysed: 0, Genomic Prog: 0

56

QUARTER-WAY TAMAR T57#

HBR

Ident: TLH22T57

Born: 29/5/2022

AMFU,CAFU,DDFU,NHFU

G A R PROPHET<sup>SV</sup>  
SMPQ400 PATHFINDER PROPHET Q400<sup>SV</sup>  
PATHFINDER BOWMAN G509#  
  
QUARTER-WAY MILES M38<sup>SV</sup>  
TLHQ271 QUARTER-WAY INGRESTA Q271#  
QUARTER-WAY KANAK K101#


Tamar is a well mannered young Prophet son out of a Miles female. Well muscle young man with a great hind.

Pen No: 8

Mating Type: Natural

Purchaser:.....

\$.....

Mid February 2024 TransTasman Angus Cattle Evaluation											
	EBV	Birth Wt.	Milk	200 Wt.	400 Wt.	600 Wt.	Scrotal Size	Carcase Wt.	EMA	Rump Fat	IMF%
		+5.2	+13	+50	+84	+100	+2.7	+47	+3.3	-0.6	+1.6
	Acc	72%	52%	65%	65%	71%	71%	57%	53%	55%	57%

Traits Observed: BWT,600WT,SC,Scan(EMA,Rib,Rump,IMF) Number of Herds: 0, Prog Analysed: 0, Genomic Prog: 0

57

QUARTER-WAY TABLOID T327#

HBR

Ident: TLH22T327

Born: 20/8/2022

AMFU,CAFU,DDFU,NHFU

G A R PROPHET<sup>SV</sup>  
SMPQ400 PATHFINDER PROPHET Q400<sup>SV</sup>  
PATHFINDER BOWMAN G509#  
  
QUARTER-WAY KINNARD K75<sup>SV</sup>  
TLHN60 QUARTER-WAY NINA N60#  
QUARTER-WAY ELISE E65#


Tabloid is one of the younger bulls in the draft. Boasting a strong pedigree, EMA and DW's.

Pen No: 8

Mating Type: Natural

Purchaser:.....

\$.....

Mid February 2024 TransTasman Angus Cattle Evaluation											
	EBV	Birth Wt.	Milk	200 Wt.	400 Wt.	600 Wt.	Scrotal Size	Carcase Wt.	EMA	Rump Fat	IMF%
		+4.4	+15	+52	+90	+112	+2.8	+56	+6.3	-1.7	+1.4
	Acc	73%	52%	65%	66%	72%	71%	57%	53%	55%	57%

Traits Observed: BWT,600WT,SC,Scan(EMA,Rib,Rump,IMF) Number of Herds: 0, Prog Analysed: 0, Genomic Prog: 0



58 QUARTER-WAY TAGALONG T76<sup>#</sup>

HBR

Ident: TLH22T76

Born: 3/6/2022

AMFU,CAFU,DDFU,NHFU

MATAURI REALITY 839<sup>#</sup>DXTP224 TEXAS REALITY P224<sup>PV</sup>TEXAS OMNIA M363<sup>SV</sup>QUARTER-WAY KINGSWELL K73<sup>SV</sup>TLHN206 QUARTER-WAY ORDEAL N206<sup>#</sup>QUARTER-WAY EIR E33<sup>#</sup>

Tagalong features strength in the pedigree. Reality is breeding well throughout Australia. EMA and positive rib.


Pen No: 8

Mating Type: AI

Purchaser:.....

\$.....

## Mid February 2024 TransTasman Angus Cattle Evaluation

TACE		Birth Wt.	Milk	200 Wt.	400 Wt.	600 Wt.	Scrotal Size	Carcase Wt.	EMA	Rump Fat	IMF%
	EBV	+3.4	+12	+39	+72	+93	+2.4	+49	+5.1	-0.6	+1.0
	Acc	74%	53%	67%	68%	73%	72%	59%	54%	56%	57%

Traits Observed: GL,BWT,600WT,SC,Scan(EMA,Rib,Rump,IMF) Number of Herds: 0, Prog Analysed: 0, Genomic Prog: 0

59 QUARTER-WAY TUBBY T128<sup>#</sup>

HBR

Ident: TLH22T128

Born: 8/7/2022

AMFU,CAFU,DDFU,NHFU

MILLAH MURRAH KINGDOM K35<sup>PV</sup>NZE17683017306 KAHARAU 306<sup>SV</sup>KAHARAU 12-9438<sup>#</sup>TEXAS HORSE POWER N229<sup>SV</sup>TLHR205 QUARTER-WAY RAPUNZEL R205<sup>SV</sup>QUARTER-WAY KIRI K87<sup>#</sup>

Kaharau 306 son, Tubby is a heifers first calf. Horse Power/Kaharau cross is a winner. Thick, deep and good footed.


Pen No: 8

Mating Type: AI

Purchaser:.....

\$.....

## Mid February 2024 TransTasman Angus Cattle Evaluation

TACE		Birth Wt.	Milk	200 Wt.	400 Wt.	600 Wt.	Scrotal Size	Carcase Wt.	EMA	Rump Fat	IMF%
	EBV	+6.9	+15	+50	+91	+125	+1.8	+53	+2.2	+0.3	+0.0
	Acc	75%	63%	74%	72%	75%	75%	63%	62%	64%	66%

Traits Observed: GL,BWT,600WT,SC,Scan(EMA,Rib,Rump,IMF) Number of Herds: 0, Prog Analysed: 0, Genomic Prog: 0

60 QUARTER-WAY THE KING T188<sup>#</sup>

HBR

Ident: TLH22T188

Born: 15/7/2022

AMFU,CAFU,DDFU,NHFU

TURIROA COMPLETE 16M013<sup>#</sup>NZE15603018P224 TURIROA RAGNAR 18P224<sup>#</sup>TURIROA L090<sup>#</sup>PEAKES GABBA K556<sup>SV</sup>TLHQ130 QUARTER-WAY QUOTATION Q130<sup>#</sup>QUARTER-WAY JOEANNE J115<sup>#</sup>

The King will be a meat producing machine. Meaty Ragnar son with positive fats. Strong young bull who shows off the depth of the entire draft.


Pen No: 8

Mating Type: AI

Purchaser:.....

\$.....

## Mid February 2024 TransTasman Angus Cattle Evaluation

TACE		Birth Wt.	Milk	200 Wt.	400 Wt.	600 Wt.	Scrotal Size	Carcase Wt.	EMA	Rump Fat	IMF%
	EBV	+4.0	+14	+37	+69	+103	+1.9	+52	-1.3	+3.3	+1.5
	Acc	74%	55%	69%	71%	73%	72%	59%	57%	59%	60%

Traits Observed: GL,BWT,400WT,600WT,SC,Scan(EMA,Rib,Rump,IMF) Number of Herds: 0, Prog Analysed: 0, Genomic Prog: 0



## 61 QUARTER-WAY TORCHBEARER T470#

HBR

Ident: TLH22T470

Born: 10/7/2022

AMFU,CAFU,DDFU,NHFU

TURIROA COMPLETE 16M013#

NZE15603018P224 TURIROA RAGNAR 18P224#

TURIROA L090#

QUARTER-WAY NO NONSENCE N187<sup>SV</sup>

TLHR96 QUARTER-WAY ROBYN R96#

QUARTER-WAY OLYMPIA N197#

Fantastic bull to conclude the catalogue with. Torchbearer is the youngest bull, from Ragnar and young Robyn. Strength in the pedigree, meat and structure.

Pen No: 8

Mating Type: AI

Purchaser:.....

\$.....

## Mid February 2024 TransTasman Angus Cattle Evaluation

TACE TransTasman Angus Cattle Evaluation		Birth Wt.	Milk	200 Wt.	400 Wt.	600 Wt.	Scrotal Size	Carcase Wt.	EMA	Rump Fat	IMF%
	EBV	+5.0	+14	+40	+75	+104	+1.7	+53	-1.2	+2.7	+1.5
	Acc	74%	50%	68%	68%	74%	73%	59%	55%	57%	57%

Traits Observed: GL,BWT,600WT,SC,Scan(EMA,Rib,Rump,IMF) Number of Herds: 0, Prog Analysed: 0, Genomic Prog: 0





## BIRTH WEIGHT & CALVING EASE

University studies in Wyoming and data from Montana and Colorado lend credence to the following conclusions:

- 1 The birth weight itself influences calving ease by 65%.
- 2 The female has 60-70% influence on birth weight of her calf.
- 3 The bull has 30-40% influence on birth weight of his progeny
- 4 Pelvic measurement and angle as well as the shape of the calf have 35-40% influence on calving ease.
- 5 Length of gestation greatly affects birth weight. A fetus can gain over one pound per day in the last days of gestation.
- 6 Weather and temperature the last 30 days affect the length of gestation.
- 7 Size and maturity of the cow influence calving ease.

Most commercial producers do not take birth weights. Guessing is as inaccurate as driving with a broken speedometer - what's thought to be 55 mph may in fact be 65 or 70 mph, and what's thought to be 70-80 lb. may actually be 80-90 lb.

Remember, everything is relevant. Increased growth, frame and performance will increase BW. A longer-bodied calf will weigh more. If a calf is expected to have genetics for growth, it will display this prior to birth as well as after. As a rule of thumb, it takes a calf weighing 85 lb. at birth to finish at 1200-1250 lb. A cow should easily give birth to a calf weighing 8% of her own body weight. Thus a 1200 lb. cow should give birth to a 96 lb. calf with ease.

**Continued selection for light birth weights will ultimately reduce the mature sizes and performance of your cattle.**







# BRINGING YOUR NEW BULL HOME

WHEN PURCHASING A BULL, CARE AND HANDLING AFTER THE SALE CAN BE AS IMPORTANT AS THE PURCHASE ITSELF. LOOKING AFTER YOUR BULL WELL DURING THE INITIAL STAGES OF HIS WORKING LIFE MAY ENSURE LONGEVITY AND SUCCESS WITHIN YOUR BREEDING HERD.

## PURCHASE

Temperament is an important characteristic when selecting a bull. Selecting a bull that may be flighty or aggressive will make life difficult for you each time he is handled. Note which bulls continually push to the centre of a mob, run around, or are unreasonably nervous, aggressive or excited.

At the sale, note any changes of temperament by individual bulls. Some bulls that are quiet in the yard or paddock may not like the pressure and noise of the auction and become excited. Others that were excited beforehand get much worse in the sale ring and can really perform. Use the yard or paddock behaviour as a guide, rather than the temperament shown in the ring.

## DELIVERY

When transporting your new bull insurance against loss in transit, accidental loss of use, or infertility, is sometimes provided by vendors. Where it is not, it is worth considering. After purchase tips:

- When purchasing, ask which health treatments he has received.
- Treat and handle him quietly at all times - no dogs, no buzzers. Talk to him and give him time and room to make up his mind.
- With more than one bull from different origins, you must be able to separate them on the truck.
- Make sure that the truck floor is covered to prevent bulls from slipping. Sand, sawdust or a floor grid will prevent bulls from being damaged by going down in transit.
- If you can arrange it, put a few quiet cows or steers on the truck with the bull. Let them down into a yard with the bulls for a while before loading and after unloading.
- Unload and reload during the trip as little as possible. If necessary, rest with water and feed. Treat bulls kindly your impatience or nervousness is easily transmitted to an animal unfamiliar to you and unsure of his environment.

## IF YOU USE A PROFESSIONAL CARRIER:

- Make sure the carrier knows which bulls can be mixed together.

- Discuss with the carrier, resting procedures for long trips, expected delivery time, truck condition and quiet handling.
- Give ear tag and brand numbers to the carrier and make sure you have the carrier's phone number.
- If buying bulls from interstate, organise any necessary health tests before leaving and work out if any other requirements must be met before cattle can come into another State.

When buying bulls from far away, you may often have to fit in with other delivery arrangements to reduce cost. You should make it clear how you want your bulls handled.

## ARRIVAL

When the bull or bulls arrive home, unload them at the yards into a group of house cows, steers or herd cows. Never jump them from the back of a truck directly into a paddock—it may be the last time you see them. Bulls from different origins should be put into separate yards with other cattle for company.

Provide hay and water, then leave them alone until the next morning.

The next day, bulls should receive routine health treatments. If they have not been treated before, all bulls should be vaccinated with:

- 5-in-1 vaccine;
- vibriosis vaccine;
- leptospirosis vaccine (if in areas like the Hunter where leptospirosis exists);
- three-day sickness vaccine (if in areas where this sickness can cause problems).

Give particular attention to preventing new bulls bringing vibriosis into a herd. Vibriosis, a sexually transmitted disease, causes infertility and abortions and is most commonly introduced to a clean herd by an infected bull. These bulls show no signs of the illness. Vaccinated bulls are free from vibriosis, so vaccinating bulls against the disease should be a routine practice.

Vaccination involves two injections, 4-6 weeks apart, at the time of introduction, and then a booster shot every year. Complete the vaccinations 4 weeks before joining.

PURCHASE

DELIVERY

AFTER PURCHASE TIPS

ARRIVAL

MATING NEW YOUNG BULLS

MANAGING OLDER HERD BULL

DURING MATING

NORTHERN AUSTRALIA





Consult with your veterinarian and draw up a policy for treating bulls on arrival and then annually. Bulls should be drenched to prevent introducing worms and, if necessary, should be treated for lice.

Plan to give follow-up vaccinations 4–6 weeks later. Leave the bulls in the yards for the next day or two on feed and water to allow them to settle down with other stock for company. A bull's behaviour will decide how quickly he can be moved out to paddocks.

## MATING NEW YOUNG BULLS

Newly purchased young bulls should not be placed with older herd bulls for multiple-sire joining. The older, dominant bull will not allow the young bulls to work, and will knock them around while keeping them away from the cows.

Use new bulls in either single-sire groups or with young bulls their own age. If a number of young bulls are to be used together, run them together for a few weeks before joining starts. They sort out their pecking order quickly and have few problems later.

When the young bulls are working, inspect them regularly and closely.

## MATING NEW YOUNG BULLS

Older working bulls also need special care and attention before mating starts. They should be tested or checked every year for physical soundness, testicle tone, and serving capacity or ability.

All bulls to be used must be free-moving, active and in good condition. Working bulls may need supplementary feeding before the joining season to bring up condition.

## DURING MATING

- Check bulls at least twice each week for the first 2 months. Get up close to them and watch each bull walk; check for swellings around the sheath and for lameness.
- Have a spare bull or bulls available to replace any that break down. Replace any suspect bull immediately.
- Rotate bulls in single-sire groups to make sure that any bull infertility is covered. Single-sire joining works well but it has risks. The bulls must be checked regularly and carefully, or the bulls should be rotated every one or two cycles.

Bulls are a large investment for breeding herds and they have a major effect on herd fertility. A little time and attention to make sure they are fit, free from disease and actively working is well worthwhile.

## NORTHERN AUSTRALIA

Although the Angus breed originated in a cooler climate, they can adapt to subtropical regions with many straight-bred and cross bred producers finding success in Northern Australia. Some of the following information may also be helpful for new bulls located in more temperate climates.

## ADAPTATION

The key to Northern success for Angus is that cattle introduced from the Southern regions of Australia be allowed to adapt to their new environment before commencing their working life. If possible, a break of 3 months is advisable before you set your bull to work.

## PURCHASE IN COOLER MONTHS

Ensure your bulls are in good condition before they do commence their working life. The cooler months are an ideal time to purchase and introduce Angus cattle, allowing them plenty of time to acclimatise.

## CHANGE OF FEED SOURCE

When inducting Angus cattle into your herd consider their source of feed. Have you taken an animal which has been supplemented on grain straight to a dry pasture? Animals should be gradually changed over to their new feed to ensure they do not lose condition. This may involve using supplements which could include dry lick/urea blocks.

## MANAGING CATTLE TICKS

For ticky areas, bulls should be vaccinated prior to transport and given another booster afterwards. Remember males are more susceptible to ticks than females.

Information is provided by the Department of Primary Industries NSW. For further information visit the DPI web site: [www.dpi.nsw.gov.au](http://www.dpi.nsw.gov.au), or [www.angusaustralia.com.au](http://www.angusaustralia.com.au). Further reading - Buying Angus Bulls

**FOR FURTHER INFORMATION VISIT**  
[www.angusaustralia.com.au](http://www.angusaustralia.com.au)

Angus Australia Locked Bag 11, Armidale NSW 2350  
Phone: (02) 6772 3011 | Fax: (02) 6772 3095  
Email: [office@angusaustralia.com.au](mailto:office@angusaustralia.com.au)  
Website: [www.angusaustralia.com.au](http://www.angusaustralia.com.au)

[WWW.ANGUSAUSTRALIA.COM.AU](http://WWW.ANGUSAUSTRALIA.COM.AU)

#ANGUSPREMIUM

#ANGUSBULLS





# LIVESTOCK AUCTION TERMS AND CONDITIONS OF SALE

## CHAPTER ONE - PRELIMINARY

1. (a) A vendor is bound by these terms and conditions by offering livestock for sale by auction.

(b) An agent (which includes an auctioneer) is bound by these terms and conditions by conducting an auction sale.

(c) A buyer is bound by these terms and conditions by bidding at auction.

(d) **Competition and Consumer Act (Cth) 2010**

It is unlawful for parties that are, or otherwise would be, in competition with each other to make, or give effect to, a contract, arrangement or understanding that contains a provision relating to:

- i. price-fixing; or
- ii. restricting outputs in the production and supply chain; or
- iii. allocating customers, suppliers or territories; or
- iv. bid-rigging; or
- v. collusive bidding.

Large fines and other sanctions may be imposed for unlawful conduct.

2. (a) In these terms the expression auctioneer, agent, buyer and vendor respectively includes the servants, contractors and agents of each of them. The auctioneer, agent, buyer and vendor shall be wholly responsible for the acts and omissions of their respective servants, contractors and agents. The term "auctioneer" includes, so far as the law and context permits, the vendor's agent.

(b) When used in these terms the expressions "companion animals" means all animals originating from the same property on a particular day. Where lots are split and sent to multiple establishments, then all of these animals shall be regarded as companions.

3. The following applies in interpreting these terms and conditions:

(a) The following words have the following meanings:

Fees means all levies, charges, fees, costs and other expenses incurred or relating to these terms and conditions and the sale and purchase of livestock including, without limitation, transaction fees, yard and weigh dues, cartage, advertising and rebates, and whether paid for, or incurred, by the agent.

Livestock means animals auctioned pursuant to these terms and conditions, and

Price means the amount at which the lot has been sold to the buyer referred to in clause 7 of these terms and conditions

(i) plus any Fees and other expenses incurred in relation to the purchase of livestock that are payable by the buyer; and

(ii) plus any GST added in accordance with clause 12.

(b) These terms and conditions are subject to legislation or regulation in the State in which the auction is conducted and in the event of any conflict then the legislation or regulation will prevail. The provisions of these terms and conditions are in addition to, and do not derogate from, the duties and rights of vendors, agents and buyers set out in legislation and regulation in the State in which the auction is conducted.

## CHAPTER TWO - STANDARD TERMS OF SALE

4. Subject to any reserve price, and to the right, prior to the fall of the hammer, of the vendor to withdraw any lot without declaring the reserve, the highest bidder shall be the buyer.

5. The auctioneer has the right to bid on behalf of the vendor provided that right is notified prior to the commencement of the sale and is subject to State law.

6. A bid cannot be made or accepted after the fall of the hammer unless, in accordance with clause 8, the auctioneer decides to put the lot up again.

7. Prior to the fall of the hammer the auctioneer shall announce the last bid and receive any further bids. The last price called by the auctioneer at the fall of the hammer shall be the amount at which the lot has been sold.

8. In the event of a disputed bid, the auctioneer is the sole arbitrator of the successful bidder or the auctioneer may decide to put the lot up again. The auctioneer's decision is final.

9. The auctioneer may refuse to accept any bid which, in the auctioneer's opinion, is not in the best interest of the vendor and need not give reasons for doing so.

10. A bidder shall be deemed to be a principal unless, prior to bidding, the bidder has given to the auctioneer a copy of written authority to bid for or on behalf of another person.

11. The successful bidder at a livestock auction sale must give to the auctioneer at the fall of the hammer:

- (a) the purchaser's name; or
- (b) the bid card number which identifies the purchaser; or
- (c) the name of the person on whose behalf the successful bid was made; and
- (d) the Property Identification Code (known as the "PIC") of destination.

12. The auction shall be conducted on the basis that the bid price shall be exclusive of Goods and Services Tax (GST). GST shall be added after the fall of the hammer for those sales subject to GST.

13. The vendor warrants:

- (a) That the vendor has (or will have) the right to sell the livestock at the time of delivery; and
- (b) That the purchaser will obtain title on completion of the purchaser's obligations under this contract including payment.

14. If a buyer does not comply with any of these terms and conditions, which includes the requirements of State law, any livestock knocked down to that buyer may be re-sold by public auction or private contract in whatever lots and manner the auctioneer decides. The re-sale may be with or without notice and shall be at the buyer's risk. The buyer is responsible for all loss and expense arising out of a re-sale and is not entitled to any resulting profit.

15. The buyer of livestock must pay the agent the full amount of the purchase price in immediate funds on receipt of a tax invoice. Payment is required prior to delivery unless some other time for payment is specified in an agreement between the buyer and the auctioneer that was made before the fall of the hammer. If, before delivery, payment has not been made then clauses 20 to 23 apply.

16. No person may bid unless, prior to the commencement of the sale, that person has made arrangements satisfactory to the auctioneer for payment for livestock purchased. If bids in breach of this condition are inadvertently accepted, delivery shall not be given until the purchase money is paid and any law, rule or practice to the contrary is accordingly negated as far as possible.

17. (a) Cattle sold on a liveweight basis that are weighed pre-sale are at the risk and expense of the buyer upon the fall of the hammer.

(b) Cattle sold on a liveweight basis that are weighed post-sale are at the risk and expense of the buyer immediately after weighing.

(c) All livestock other than cattle sold on a liveweight basis are at the risk and expense of the buyer upon the fall of the hammer.

18. (a) Subject to this clause the sale is complete on the fall of the hammer.

(b) The time for rejection is the time commencing at the fall of the hammer and ending at the first of:

- (i) delivery is taken by a representative of the buyer;
- (ii) departure of the animal from the purchaser's delivery pen; or
- (iii) one hour after the last animal is:
  - a. in the case of pre-sale weighing, sold; or
  - b. in the case of post-sale weighing, weighed.

(c) During the time for rejection the buyer may reject any animal which is lame, blind or diseased where that condition existed prior to the fall of the hammer but could not be reasonably observed when the animal was in the selling pen.

(d) If the purchaser rejects an animal during the time for rejection then the sale of that animal is cancelled and the animal is returned to the vendor or sold on such terms as any buyer and the agent may agree, after the agent has disclosed the reason for rejection to that buyer.

(e) This subclause applies only to cattle which are sold in Queensland at auction for slaughter. The agent has responsibility for the prevention of loss or escape (but not death, sickness or injury) of those cattle from the time of the fall of the hammer, for delivery to and from the scales, to the buyer's delivery pen and onto the buyer's nominated transport. This responsibility ends at the earlier of those cattle boarding the buyer's nominated transport or sunset on the day after the sale. This

subclause does not apply if the agent makes an announcement to that effect prior to sale.

19. (a) Subject to the right of rejection in Clause 18, all conditions and warranties expressed or implied by law are hereby excluded from the sale to the extent that the law allows. All lots are open for inspection prior to the commencement of the sale and are sold with all faults, if any. No compensation shall be given for any faults, imperfections, errors of description, number in or of any lots sold or otherwise.

(b) Any claim or objection arising out of an error or misdescription in the provision of relevant information in terms of legislation or regulation concerning the National Livestock Identification Scheme (NLIS) must be made by 5.00pm on the seventh day after the fall of the hammer. No objection, requisition or claim against the vendor or agent in respect of such error or misdescription can be made after that time.

(c) Any statements made by the vendor or the auctioneer whether in writing or orally to the effect that any female has been pregnancy tested or scanned positive shall mean and require only that a certificate in writing shall be supplied to the buyer signed by a qualified veterinary surgeon or certified scanner certifying that the said female has been tested or scanned on the date specified in the certificate and that in the opinion of the surgeon or scanner was pregnant on that date.

(d) For slaughter cattle, the agent undertakes to make every reasonable effort to ensure that any NLIS cattle device number is transferred from the saleyard PIC to the purchaser's PIC on the NLIS database no later than midnight on the day of the sale.

(e) For other slaughter livestock the agent undertakes to make every reasonable effort to ensure that the NLIS information is transferred from the saleyard PIC to the purchaser's PIC on the NLIS database no later than midnight on the day of the sale.

(f) Where livestock have a food safety or market eligibility status derived from the National Vendor Declaration (NVD) and/or the NLISERP database, the agent will inform the buyers by pre-sale catalogue and/or announce the status prior to the offering of those lots.

20. If delivery is made to, or possession obtained by, the buyer or its representative before full payment of the Price, then until full payment is received, the buyer:

- (a) does not acquire title to the livestock;
- (b) holds the livestock as bailee only for the vendor;
- (c) must act in a fiduciary capacity in its relationship with the vendor;
- (d) must store the stock separately or so that they are readily distinguishable from other livestock owned by the buyer;
- (e) is responsible for the safety and well being of the livestock;
- (f) may make a bona fide sale for market value of any or all of the livestock. As between the buyer and the subsequent buyer, the sale shall be made by the buyer in its own name and not as agent for the vendor, however as between the vendor and buyer, the sale shall be made as bailee and agent for the vendor; and
- (g) must keep and account for the proceeds of any subsequent sale separately from its other money and hold those proceeds, together with the benefits of any rights against subsequent buyers, on trust for the vendor.

21. The purchaser agrees that:

- (a) Clause 26 creates a registrable security interest under the Personal Property Securities Act (Cth) 2009 (PPSA);
- (b) The Purchaser acknowledges the rights of the Seller (and/or the Agent if Clause 25 applies) to register a financing statement under the PPSA with respect to the security interest created by this clause;
- (c) the Livestock are collateral for the purposes of the PPSA;
- (d) to the extent permitted, the Purchaser waives any right the Purchaser has under the PPSA to receive notices; and
- (e) the date upon which the security interest created by this clause comes into force is the first date on which livestock are delivered pursuant to this contract.

22. The buyer may not make any claim against the vendor for actions by the vendor or its agent under clauses 20 or 21 and indemnifies the vendor and its agent against any loss, damage, costs, expenses, penalties, fines or claims suffered by the vendor, the agent or any person or entity arising from the vendor exercising its rights under clauses 20 or 21.

23. Clause 23 applies whenever the agent pays the vendor before being paid by the buyer, which the agent is not bound to do. The agent is then the del credere agent of the vendor at law.

24. The vendor hereby gives notice to the buyer of the assignments referred to in clause 23.3.

25. When this clause applies, in addition to any rights of the agent that arise by operation of law, the parties agree that, subject to clause 23.5, the agent is subrogated to all rights of the vendor under these terms and conditions against the buyer.

26. The vendor acknowledges that the agent may take enforcement, repossession or other action to recover any livestock for which the buyer has not paid in full, or the Price of such livestock, owing by the buyer under these terms and conditions:

- (a) when this clause does not apply, as agent of the vendor (including by reselling the livestock); and
- (b) when this clause applies, on the agent's own behalf exercising the rights of the vendor by subrogation or assignment under these terms and conditions (whether in the vendor's name or not) and, where title to the livestock has not passed to the agent, by selling the livestock as agent of the vendor without the agent having to account to the vendor for the proceeds of sale.

27. The agent may at any time, assign, transfer, securities or otherwise dispose of all or any of its rights under these terms and conditions and any debts created pursuant to it (including, without limitation, the rights assigned to it under clause 23.3).

28. The vendor hereby irrevocably appoints the agent as the vendor's attorney to:

- (a) do at any time and in any manner as the agent thinks fit all acts necessary or desirable to perfect or improve the rights and interests afforded, or intended to be afforded, to the agent under these terms and conditions; and
- (b) appoint one or more sub-attorneys to do anything that the agent may do as the vendor's attorney.

29. These terms and conditions do not render the agent liable to the buyer as vendor nor entitle the buyer to set off against the agent any right the buyer may have against the vendor or otherwise.

30. The buyer acknowledges that the provisions of this clause 23 are intended solely for the benefit of the agent (and its assigns) and the vendor. The liabilities and obligations of the buyer will not be in any way affected:

- (a) by this clause 23, other than as it expressly provides; or
- (b) by the failure of the agent or the vendor or either of them to comply with the terms of this clause 23.

31. The buyer must pay all amounts payable to the vendor or the agent under these terms and conditions without any deduction, withholding, set off or counterclaim whatsoever, whether the benefit of a deduction, withholding, set off or counterclaim is alleged to exist in favour of the buyer as against the vendor or the agent in any capacity whatsoever or any other person including any assignor of the vendor's or the buyer's interests under these terms and conditions.

32. The agent agrees that he is liable to pay to the vendor the Price, less such commission as is agreed between the vendor and the agent, and in the absence of any agreement such amount as is reasonable, and less the Fees that are payable by the vendor that were incurred by the agent on behalf of the vendor in relation to the sale of the livestock.

33. In the event that the buyer pays the Price or part of it direct to the vendor then the agent has no liability to the vendor for the amount of such payment. Further, if the agent pays the vendor any amount which the buyer also pays direct to the vendor in respect of the same livestock, then the vendor must repay the agent that amount and the agent may debit that amount to an account held in the name of the vendor by the agent.

34. Regardless of whether or not a sale has occurred the agent may, but is not under obligation to do so, instead of deducting payments owed to it by the vendor, debit the amount of the commission and fees to an account held in the name of the vendor by the agent.

35. The auctioneer has been retained by the vendor as auctioneer for the purpose of selling the livestock comprised in the lots. The terms of

engagement between the auctioneer and the vendor do not extend to the provision of advice by the auctioneer to the vendor in relation to the safety or otherwise of the sale ring, the saleyards and the surrounding environments.

(b) The vendor, the agent and the buyer agree to comply with their several duties under the Australian Animal Welfare Standards and Guidelines for the Land Transport of Livestock and further to consign, manage, receive, transport and handle livestock in accordance with any other or additional requirements of animal welfare legislation specific to the jurisdiction in which livestock are consigned, managed, received, transported and handled in the course of the auction process.

## CHAPTER THREE - VENDOR WARRANTY FOR CORRECT PRESENTATION AND DECLARATION

26. This chapter applies only in the case of livestock and their companion animals sold at auction for slaughter when the buyer is the slaughterer and the livestock are transported direct from the sale yard to the meatworks at which they are slaughtered. This chapter does not apply if the buyer is a trader who subsequently resells the livestock to a slaughterer. A slaughterer is any person who pays the AMPC Processor levy.

27. The warranty of a vendor is that livestock and their companion animals offered for sale at auction:

- (a) pass government and other regulatory authority requirements and inspections at the time of slaughter;
- (b) are of merchantable quality;
- (c) carry an NLIS device in accordance with State law;
- (d) in the case where a representation has been made in the pre-sale catalogue that the livestock have particular characteristics or are fit for a particular purpose or market, and such representations are based on information in any document, the livestock will have those characteristics or will be fit for the particular purpose or market; and
- (e) all information in any document provided by the vendor is true, complete and correct in all material respects.

28. In the event of a breach by the vendor of the vendor's warranty and provided such breach is notified by the buyer to the agent by 5.00pm on the 7<sup>th</sup> day after the fall of the hammer then the buyer is not liable to pay the portion of the Price of such of the vendor's livestock to which the breach applies.

29. However if the breach by the vendor is such that the livestock are not rejected outright but are instead downgraded then the buyer will pay the value of the livestock at their next highest and best use.

30. In the case of a breach by the vendor of the vendor's warranty then the vendor will also be liable to the buyer for any further losses which the buyer might establish but the buyer will take all reasonable steps in co-operation with the agent and vendor to mitigate both the effect of the breach and the amount of any loss.

31. Where a sentinel animal of a lot tests positive for chemical residue, or foreign material contamination and provided such test is certified and notified as required by these vendor warranty terms, then:

- (a) the buyer will be entitled to delay payment for the price of all livestock in that lot only; or
- (b) the vendor has the option, at the vendor's cost, of collecting the companion animals, if allowed by law, or of having the livestock slaughtered in which event the risk of further condemnations will be that of the vendor. Where product integrity is potentially jeopardised, the Processor has the right to refuse slaughter and send the livestock back to the consigning property at the vendor's cost.

32. The auctioneer is liable to the buyer in respect of any breach of the vendor's warranty arising out of:

- (a) any error, by the auctioneer, of transcription of information from the NVD completed by the vendor to the pre-sale catalogue or the buyers post-sale summary;
- (b) any failure by the auctioneer to notify the buyer, prior to bidding, of any breach by the vendor of the warranty of the vendor if the buyer establishes that the agent knew of such breach prior to the sale; and
- (c) any failure by the auctioneer to announce prior to bidding, or disclose in the pre-sale catalogue, that the vendor has failed to provide a NVD that is complete in all material aspects.

## CHAPTER FOUR - OWNERS RISK FOR CONDITION OF CATTLE

33. This chapter applies only in the case of cattle and their companion animals sold at auction for slaughter when the buyer is the slaughterer and the cattle are transported direct from the sale yard to the meatworks at which they are slaughtered. This chapter does not apply if the buyer is a trader who subsequently resells cattle to a slaughterer. A slaughterer is any person who pays the AMPC Processor levy.

34. Owners risk reflects the producer's responsibility to provide slaughter cattle for sale that are fit for human consumption. Cattle are fit for human consumption if they are not condemned as unfit by government. Owners risk applies if the condemnation is due to a condition in the animal which the buyer establishes by the relevant government certificate, existed prior to the fall of the hammer.

35. A buyer with the benefit of owners risk protection is not liable to pay the Price of that animal to the vendor. The buyer remains nevertheless liable for all costs incurred after the fall of the hammer in transport, slaughter, testing and disposal of the animal.

36. Owners risk protection is available to the buyer of cattle to which this chapter applies if all of the following are satisfied:

- (a) a certificate is issued by government which states the relevant NLIS RFID tag number and PIC, the date of the certificate, the reason for condemnation and that the reason for condemnation existed prior to the fall of the hammer;
- (b) the certificate is received by the selling agent either in its original form or by fax or electronic communication in the form of data, text or imaging by 5.00pm on the 7<sup>th</sup> day after the fall of the hammer; and
- (c) if the condemnation is due to chemical residue the certificate follows testing in a government approved laboratory which establishes maximum residue limits in excess of the Australian limit.

37. Owners risk does not apply, and the buyer must pay for the cattle, if the reason for condemnation is any of bruising, fever, partial condemnation or emaciation.

## CHAPTER FIVE - NOTICES REQUIRED BY LEGISLATION

### NSW Property, Stock and Business Agents Act 2002 Warnings

Penalties for collusive practices. It is an offence against the Property, Stock and Business Agents Act 2002 for a person to do any of the following as a result of a collusive practice, or to induce or attempt to induce another person by a collusive practice to do any of the following:

- (i) to abstain from bidding; or
- (ii) to bid to a limited extent only; or
- (iii) to do any other act that might prevent free and open competition.

Severe penalties may be imposed on persons convicted of collusive practices. The auctioneer has the right to make one bid on behalf of the vendor if the auctioneer clearly and precisely announces that fact prior to the sale.

Tasmania Legislation. An auctioneer conducting a public auction must not appear to acknowledge the making of a bid if no bid was made. A person must not participate in collusive practices by way of making or receiving an unlawful promise to abstain from bidding, not to bid except to a limited extent or do any other thing which may prevent free and open competition.

### WA Auction Sales Act 1973 s31 NOTICE

It is an offence to:

- (i) induce or attempt to induce another person to abstain from bidding by means of a promise, expressed or implied, that the other person will have the right to elect to take over as buyer or to toss or draw lots to establish who is to become the owner;
- (ii) abstain or agree to abstain from bidding as a result of such a promise;
- (iii) knowingly enter or permit or cause to be entered in the auctioneer's record any name other than that of the actual successful bidder;
- (iv) enter in the auctioneer's record the name of the buyer other than that of the actual successful bidder; or
- (v) in the case of successful bidder supply wrong information as to the name of the buyer to the auctioneer or to any person, firm or corporation on whose behalf the sale is conducted.

The vendor, or any person on behalf of the vendor, or the auctioneer have the right to make no more than three bids.



Having missed the rains received by our mainland counterparts we have been experiencing a very dry, tough season. This extends across most of Tasmania, King, and Flinders Islands. It is a constant task making sure our troughs are all working, with no leaks or breakages.

We are very happy to have bought water out of the new Scottsdale irrigation scheme. With this scheme passing through most of our farms, we have connected stock water to it. This is proving its worth with quality water delivered under pressure. We also have 2 centre pivots connected to the same scheme. A great asset at the moment!

Spring was also below average, with hay and silage cuts yielding about 50%. Fodder crops have struck well but are in need of drink now.

News out of the US is encouraging for Australia. The USDA inventory report 31 Jan 2024 states the cattle herd in the US is the lowest since 1951, they had the lowest calf drop on record last year and calf weaning weight dropped under 500lb for the first time ever. (Bit unsure how they calculated the weaning weight.)

The market in Australia should start to get some sting back into soon, and us cow/calf producers can get back in good profitability, being paid properly for all our hard work and investment.

Good luck with the coming year, good grass, and good prices.

*Trev*



## HELP WHEN IT MATTERS



PLEASE CONTACT OUR AGRIBUSINESS MANAGERS

**JIM CUMING**

Senior Relationship Manager - 0423 049 797

**JASON BARKER**

Agribusiness Banking Manager - 0434 654 103

**DAVE MILNER**

Regional General Manager - 0418 373 395



## BUYERS INSTRUCTION SLIP

NAME: .....

ADDRESS: .....

..... POSTCODE: .....

EMAIL: .....

PHONE: .....

MOBILE: .....

BUYERS PIC: .....

PLEASE INDICATE IF ANGUS AUSTRALIA TRANSFER REQUIRED: YES / NO

ANGUS AUSTRALIA HERD ID: .....

STUD PREFIX: .....

ACCOUNT TO: .....

AGENT: .....

LOTS PURCHASED: .....

.....

.....

.....

### DELIVERY INSTRUCTIONS

.....

.....

.....

INSURANCE (Period): .....

.....

.....

BUYER SIGNATURE (or AGENT NAME/SIGNATURE):

.....

.....

.....

..... DATE: .....

.....

### SPECIAL NOTICE TO BUYERS

1. In the interest of buyers and to prevent the occurrence of mistakes, all instructions concerning delivery, trucking and shipping of cattle, must be given IN WRITING and signed by the buyer or his representative..
2. Please ensure Instruction is completely filled in.

INSURANCE - PLEASE CHECK WITH YOUR INSURANCE AGENT THAT COVER IS FOR LOSS OF USE AS WELL AS DEATH.







**QW**  
**QUARTERWAY**  
ANGUS



Proudly created by Outriders & Co.

[quarterwayangus.com.au](http://quarterwayangus.com.au)